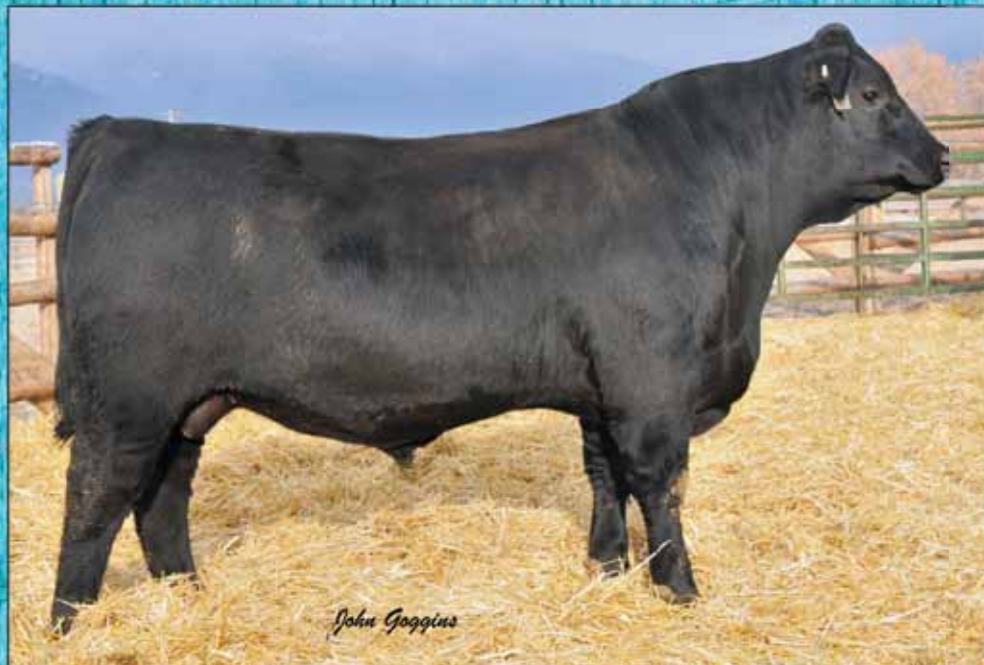


GOLLAHER RANCH

Quality Carcass Bulls



**35th Annual
Yearling Angus Bull Sale**

**Monday,
April 7, 2014
1:00 pm**



At the ranch • Cascade, Montana

35th Annual Gollaher Ranch Yearling Angus Bull Sale

Monday, April 7, 2014

1:00 pm At the Ranch Cascade, MT

Lunch will be served at 12:00 Noon

Sale Day Phones

Gollaher Ranch 406.468.2273

Email: gollaherranch@yahoo.com • www.gollaherranch.com

Auctioneer:
Roger Jacobs
406.373.6124

Livestock Press Representatives

John Goggins.....406.698.4159
Western Livestock Reporter
Kurt Kangas.....661.706.2041
American Angus Assn
Don Rehm..... 406.322.4707 or 406.321.2000 (cell)
Special Assignment

Bidding

Absentee bidding maybe made with any of the livestock press representatives or the auctioneer, Roger Jacobs. Contact the Gollaher family if you need any other assistance or have questions.

Sale Location

Gollaher Ranch is located 6 miles SE of Cascade, MT. Take Exit 254 (from S) or 256 (from N) off Interstate 15, turn East on Central Avenue, cross the Missouri River and follow MT Hwy 330 to the ranch. Watch for signs.

Announcements

Announcements from the block by the owners or auctioneer will take precedence over printed material. Supplemental data and corrections will be available sale day.

Terms and Conditions

All bulls sell under the terms of the American Angus Association. Settlement must be made at the time of sale unless prior arrangements have been made with the owners.

Delivery

Gollaher Ranch will deliver bulls free for the first 250 miles, after that charges will be at cost. Delivery will occur as soon as possible after the sale.

Health

All bulls have been semen tested with a complete breeding physical under the direction of Hilt Veterinary Service, Dutton, MT. All bulls will be BVD tested.

EPD Data

Data not contained in this catalog for the individual bulls will be available sale day. Epd's are as of Feb 27, 2014. Ultrasound data, final weights and scrotal measurements available sale day.

Liability

Gollaher Ranch or Myrle or Delight Gollaher will assume no liability whatsoever for any accidents or injury which may occur sale day.

Transportation & Accommodations

Gollaher Ranch is 30 minutes south of Great Falls International Airport Motel accommodations available in Cascade:

Badger Motel 406-468-9330

A & C Motel 406-468-2513

Please contact us for further assistance.

BULL MORTALITY *and* LOSS OF USE INSURANCE COVERAGE



Protect Your INVESTMENT



Tyler Holland
406.586.3351
tjholland@paynewest.com

Coverage Option 1: Bull Mortality and Loss of Use Coverage

Values: Bulls valued up to \$25,000, not to exceed purchase price.
Term: One Year Policy Term
Premium: 12% of the Purchase Price
Premium Fully Earned
\$150 Minimum Premium Per Animal
Testing: All bulls must be tested, certified and listed in an official herd sale catalog.

Coverage Option 2: Bull Full Mortality Coverage

Values: Bulls valued up to \$25,000, not to exceed purchase price.
Term: Renewable One-Year Policy Term for Bulls 6 Month - 7 Years of age.
Premium: 5.5% of the Purchase Price
Premium Fully Earned
\$150 Minimum Premium Per Animal
Testing: Veterinarian examination and signed statement of health required for all bulls for which coverage is requested.

COVERAGES

Full Mortality:
100% of the value of the bull in the event of death or life-threatening injury.
Loss of Use:
80% of the value of the bull, less salvage value, of in the event of Loss of Use from an accident, illness, or disease that can clearly be diagnosed or identified to have occurred on a specified date.
25% of the value of the bull in the event of Loss of Use from an accident, illness, or disease if there is a diagnosis consistent with an accident, illness, or disease but no real evidence that provides clear diagnosis or identification.

COVERAGE

Full Mortality:
100% of the value of the bull in the event of death or life-threatening injury.

Coverage Underwritten By:
Aegis Security Insurance Company
PO Box 3153, Harrisburg, PA 17105-3153
AM BEST RATING: A VI



Myrle & Delight Gollaher
3112 Cascade Hound Creek Road • Cascade, MT 59421
406-468-2273

www.GollaherRanch.com
gollaherranch@yahoo.com

Welcome to the 35th Annual Bull Sale. Thank you for looking over our sale offering.

The bulls are sired by some of the leading AI sires and our herd bulls. The sire and dam mating have been considered to produce calving ease bulls without compromising their performance for growth, feed efficiency and carcass value.

Eighty five percent (85%) of the bulls in this sale are suitable for use on heifers. As we select bulls for body length, depth, muscling and soundness, these are an impressive set of yearling bulls that will mature into great cow bulls adding to their value and a nice return on your original investment.

Data in this catalog is as of Feb. 27th. Final weights, scrotal measurement and carcass scan results will be available on sale day. If you have any questions about our operation, the cow herd, or the individual bulls please contact us.

Thanks for looking over the sale offering and hope to see you on April 7, 2014. Lunch is at noon.

-----The Gollahers

For dollars invested in bulls, we offer the best value you will find anywhere.

American Angus Association® Selection Tools

Expected Progeny Difference (EPD), is the prediction of how future progeny of each animal are expected to perform relative to the progeny of other animals listed in the database. EPDs are expressed in units of measure for the trait, plus or minus. Interim EPDs may appear on young animals when their performance has yet to be incorporated into the American Angus Association National Cattle Evaluation (NCE) procedures. This EPD will be preceded by an "I", and may or may not include the animal's own performance record for a particular trait, depending on its availability, appropriate contemporary grouping, or data edits needed for NCE.

GROWTH

Calving Ease Direct (CED), is expressed as a difference in percentage of unassisted births, with a higher value indicating greater calving ease in first-calf heifers. It predicts the average difference in ease with which a sire's calves will be born when he is bred to first-calf heifers.

Birth Weight EPD (BW), expressed in pounds, is a predictor of a sire's ability to transmit birth weight to his progeny compared to that of other sires.

Weaning Weight EPD (WW), expressed in pounds, is a predictor of a sire's ability to transmit weaning growth to his progeny compared to that of other sires.

Yearling Weight EPD (YW), expressed in pounds, is a predictor of a sire's ability to transmit yearling growth to his progeny compared to that of other sires.

MATERNAL

Maternal Milk EPD (Milk), is a predictor of a sire's genetic merit for milk and mothering ability as expressed in his daughters compared to daughters of other sires. In other words, it is that part of a calf's weaning weight attributed to milk and mothering ability.

CARCASS

The genetic evaluation produces a single set of EPDs for carcass weight, marbling score, Ribeye area and fat thickness. The units of measure are in carcass trait format and analyzed on an age-constant basis.

Marbling EPD (Marb), expressed as a fraction of the difference in USDA marbling score of a sire's progeny compared to progeny of other sires.

Ribeye Area EPD (RE), expressed in square inches, is a predictor of the difference in ribeye area of a sire's progeny compared to progeny of other sires.

Fat Thickness EPD (Fat), expressed in inches, is a predictor of the differences in external fat thickness at the 12th rib (as measured between the 12th and 13th ribs) of a sire's progeny compared to progeny of other sires.

\$VALUE INDEXES

\$Value indexes, are multi-trait selection indexes to assist beef producers by adding simplicity to genetic selection decisions. \$Values are reported in dollars per head, where a higher value is more favorable. The \$Value is an estimate of how future progeny of each sire are expected to perform, on average, compared to progeny of other sires in the database if the sires were randomly mated to cows and if calves were exposed to the same environment.

Beef Value (\$B), an index value expressed in dollars per head, is the expected average difference in future progeny performance for post weaning and carcass value compared to progeny of other sires.



Myrle & Delight Gollaher
3112 Cascade Hound Creek Road • Cascade, MT 59421
406-468-2273

www.GollaherRanch.com
gollaherranch@yahoo.com

Welcome to the 35th Annual Bull Sale. Thank you for looking over our sale offering.

The bulls are sired by some of the leading AI sires and our herd bulls. The sire and dam mating have been considered to produce calving ease bulls without compromising their performance for growth, feed efficiency and carcass value.

Eighty five percent (85%) of the bulls in this sale are suitable for use on heifers. As we select bulls for body length, depth, muscling and soundness, these are an impressive set of yearling bulls that will mature into great cow bulls adding to their value and a nice return on your original investment.

Data in this catalog is as of Feb. 27th. Final weights, scrotal measurement and carcass scan results will be available on sale day. If you have any questions about our operation, the cow herd, or the individual bulls please contact us.

Thanks for looking over the sale offering and hope to see you on April 7, 2014. Lunch is at noon.

-----The Gollahers

For dollars invested in bulls, we offer the best value you will find anywhere.

American Angus Association® Selection Tools

Expected Progeny Difference (EPD), is the prediction of how future progeny of each animal are expected to perform relative to the progeny of other animals listed in the database. EPDs are expressed in units of measure for the trait, plus or minus. Interim EPDs may appear on young animals when their performance has yet to be incorporated into the American Angus Association National Cattle Evaluation (NCE) procedures. This EPD will be preceded by an "I", and may or may not include the animal's own performance record for a particular trait, depending on its availability, appropriate contemporary grouping, or data edits needed for NCE.

GROWTH

Calving Ease Direct (CED), is expressed as a difference in percentage of unassisted births, with a higher value indicating greater calving ease in first-calf heifers. It predicts the average difference in ease with which a sire's calves will be born when he is bred to first-calf heifers.

Birth Weight EPD (BW), expressed in pounds, is a predictor of a sire's ability to transmit birth weight to his progeny compared to that of other sires.

Weaning Weight EPD (WW), expressed in pounds, is a predictor of a sire's ability to transmit weaning growth to his progeny compared to that of other sires.

Yearling Weight EPD (YW), expressed in pounds, is a predictor of a sire's ability to transmit yearling growth to his progeny compared to that of other sires.

MATERNAL

Maternal Milk EPD (Milk), is a predictor of a sire's genetic merit for milk and mothering ability as expressed in his daughters compared to daughters of other sires. In other words, it is that part of a calf's weaning weight attributed to milk and mothering ability.

CARCASS

The genetic evaluation produces a single set of EPDs for carcass weight, marbling score, Ribeye area and fat thickness. The units of measure are in carcass trait format and analyzed on an age-constant basis.

Marbling EPD (Marb), expressed as a fraction of the difference in USDA marbling score of a sire's progeny compared to progeny of other sires.

Ribeye Area EPD (RE), expressed in square inches, is a predictor of the difference in ribeye area of a sire's progeny compared to progeny of other sires.

Fat Thickness EPD (Fat), expressed in inches, is a predictor of the differences in external fat thickness at the 12th rib (as measured between the 12th and 13th ribs) of a sire's progeny compared to progeny of other sires.

\$VALUE INDEXES

\$Value indexes, are multi-trait selection indexes to assist beef producers by adding simplicity to genetic selection decisions. \$Values are reported in dollars per head, where a higher value is more favorable. The \$Value is an estimate of how future progeny of each sire are expected to perform, on average, compared to progeny of other sires in the database if the sires were randomly mated to cows and if calves were exposed to the same environment.

Beef Value (\$B), an index value expressed in dollars per head, is the expected average difference in future progeny performance for post weaning and carcass value compared to progeny of other sires.

Reference Sires



Reference Sire **MYTTY BEXTOR 86W**

Reg: 16409704 • Calved: 01/23/2009 • Tat: 86W

C R A BEXTOR 872 5205 608 #
 B A R EXT TRAVELER 205 #
 CRA LADY JAYE 608 498 S EASY
 MYTTY IN FOCUS #
MYTTY PRIDE 32S #
 ADAMS DURATREND PRIDE 6113

N B A R EMULATION EXT #
 B A R QUEEN TRAVELER 3015 #
 G A R SLEEP EASY 1009 #
 H H F 917 LADY 975 498
 S A F FOCUS OF E R #
 MYTTY COUNTESS 906
 H B R DURATREND 2315
 L F PRIDE 3113

CED	BW	WW	YW	MILK	SC		
+9	+7	+68	+109	+35	+84		
CW	MARB	RE	FAT	\$W	\$F	\$G	\$B
+0	+74	+44	+016	+57.85	+50.96	+44.29	+51.21



Reference Sire **BOBCAT X FACTOR X22**

Reg: 16803800 • Calved: 02/19/2010 • Tat: X22

VERMILION X FACTOR #
 NICHOLS EXTRA K205 #
 VERMILION LADY 2888

CONNEALY DANNY BOY #
BOBCAT BARBARA 826
 VERMILION BLANCHE 9888

NICHOLS EXTRA H6 #
 NICHOLS BLACK HEIRESS F346
 VERMILION DATELINE 7078 #
 VERMILION LADY 7993 #
 CONNEALY TIMELINE #
 ENERGY OF CONANGA 4851
 GIBB BANDO 598-1507 #
 VERMILION BLANCHE 5807

CED	BW	WW	YW	MILK	SC		
+11	-.6	+54	+92	+16	+57		
CW	MARB	RE	FAT	\$W	\$F	\$G	\$B
+46	+33	+86	+013	+40.25	+35.53	+27.55	+89.60



Reference Sire **FF DIVIDE X1**

Reg: 16692673 • Calved: 01/01/2010 • Tat: X1

S A V BISMARCK 5682
 G A R GRID MAKER #
 S A V ABIGALE 0451

MF DESTROYER 093 #
JF EMPRESS U4
 FF EMPRESS S13

G D A R TRAVELER 044 #
 G A R PRECISION 2536
 SCHOENES FIX IT 826F #
 S A V ABIGALE 6062
 EXAR SUDDEN IMPACT 1537
 M F CHERRY 115
 ACF HIGH PRIME 2245
 JJ EMPRESS P46

CED	BW	WW	YW	MILK	SC		
+8	+1.0	+58	+101	+27	+52		
CW	MARB	RE	FAT	\$W	\$F	\$G	\$B
+29	+53	+70	+001	+43.04	+45.37	+37.55	+84.14



Reference Sire **JF IRON SIGHT Y46**

Reg: 17012432 • Calved: 01/26/2011 • Tat: Y46

S A V IRON MOUNTAIN 8066
 TC GRIDIRON 258 #
 S A V MADAME PRIDE 3249

WOODHILL FORESIGHT #
JAF EVERELDA ENTENSE 15U
 BT EVERELDA ENTENSE 526M

G A R GRID MAKER #
 TC BLACKBIRD 7049 #
 S A V 8180 TRAVELER 004 #
 S A V MADAME PRIDE 8264
 PAPA FORTE 1921 #
 BON VIEW GAMMER 85
 LEACHMAN RIGHT TIME #
 SITZ EVERELDA ENTENSE 1905

CED	BW	WW	YW	MILK	SC		
+10	-.4	+63	+104	+20	—		
CW	MARB	RE	FAT	\$W	\$F	\$G	\$B
+32	+47	+26	+015	+39.95	+46.80	+28.13	+77.97

Reference Sires



6 sons sell

Reference Sire **CIRCLE A INCENTIVE**

Reg: 16005537 • Calved: 12/19/2007 • Tat: 7594

- S S TRAVELER 6807 T510 #
- S S OBJECTIVE T510 0T26 #**
- S S MISS RITA R011 7R8
- C R A BEXTOR 872 5205 608 #
- CIRCLE A BEAUTY 5566 #**
- M G S A BEAUTY 4007
- D H D TRAVELER 6807 #
- S S MISS HI SPADE A114 #
- S S RITO RITO R76 R011
- S S MISS ULTRESS U56
- B A R EXT TRAVELER 205 #
- CRA LADY JAYE 608 498 S EASY
- G A R PRECISION 1680 #
- BIG ROK BEAUTY 742

CED	BW	WW	YW	MILK	SC		
+11	+2.1	+63	+110	+26	+1.32		
CW	MARB	RE	FAT	\$W	\$F	\$G	\$B
+24	+1.18	+0.72	-0.31	+43.16	+55.01	+57.21	+98.84



6 sons sell

Reference Sire **CONNEALY IRISH 0204**

Reg: 16761484 • Calved: 01/26/2010 • Tat: 0204

- CONNEALY COWBOY
- CONNEALY WRANGLER**
- KELLY OF CONANGA 577
- MYTTY IN FOCUS #
- BLACK CREST OF CONANGA 5640 #**
- BLACK CRESHA OF CONANGA 3314
- C A FUTURE DIRECTION 5321 #
- BECKAH OF CONANGA 747
- G A R GRID MAKER #
- CONNEALY BANDO 133
- S A F FOCUS OF E R #
- MYTTY COUNTESS 906
- C R A BEXTOR 872 5205 608 #
- BLACK CRESA OF CONANGA 5332

CED	BW	WW	YW	MILK	SC		
+15	-.2	+55	+107	+23	+1.31		
CW	MARB	RE	FAT	\$W	\$F	\$G	\$B
+39	+0.61	+0.77	-0.38	+36.84	+55.15	+42.64	+99.90

Reference Sire **MYTTY WINDY 758 12X** **8 sons sell**

Reg: 16699012 • Calved: 01/06/2010 • Tat: 12X

- H A R B WINDY 702 JH #
- H A R B WINDY 758 JH**
- H A R B JUANADA ERICA 571 JH #
- MYTTY IN FOCUS #
- MYTTY COUNTESS JACKIE 90U**
- MYTTY COUNTESS JACKIE 909
- A A R REALLY WINDY 1205 #
- H A R B BLACK LADY 073 JH
- S A V FINAL ANSWER 0035 #
- H A R B JUANADA ERICA 391 JH
- S A F FOCUS OF E R #
- MYTTY COUNTESS 906
- TC STOCKMAN 365 #
- 4 M COUNTESS JACKIE C46 #

CED	BW	WW	YW	MILK	SC		
+14	-.7	+37	+78	+21	+1.78		
CW	MARB	RE	FAT	\$W	\$F	\$G	\$B
+15	+0.33	+0.51	+0.060	+24.93	+26.06	+23.63	+51.19

Reference Sire **KG ALLIANCE 0168** **4 sons sell**

Reg: 16779890 • Calved: 02/06/2010 • Tat: 0168

- SITZ ALLIANCE 6595 #
- SITZ ALLIANCE 7544 #**
- SITZ PRIDE 2561
- G A R RETAIL PRODUCT #
- KG JUDITH 8145**
- DJ JUDITH S214
- SITZ TRAVELER 8180 #
- SITZ BARBARAMERE JET 2698 #
- D H D TRAVELER 6807 #
- SITZ PRIDE 2188
- G A R PRECISION 1680 #
- G A R EXT 4927
- KAHN BROADBAND R A 94L #
- ER JUDITH K035

CED	BW	WW	YW	MILK	SC		
+7	+1.0	+58	+114	+35	+2.12		
CW	MARB	RE	FAT	\$W	\$F	\$G	\$B
+44	+0.40	+0.23	+0.053	+32.93	+63.34	+17.26	+80.01

Reference Sire **SILVEIRAS OUT WEST 7026** **5 sons sell**

Reg: 15630115 • Calved: 01/09/2007 • Tat: 7026

- BON VIEW NEW DESIGN 1407 #
- SILVEIRAS WAY OUT WEST 3527**
- SILVEIRAS ELBA 1515
- WAR ALLIANCE 9126 6006 #
- SILVEIRAS KIND JANIE 5017**
- KIND JANIE OF HOLIDAY 9055
- B/R NEW DESIGN 036 #
- BON VIEW PRIDE 664
- BON VIEW BANDO 598 #
- D A R ELBA 55
- SITZ ALLIANCE 6595 #
- WAR BANDO 6006 598 4053
- CALIFORNIA TRAVELER #
- FIVE STAR KIND JANIE 744

CED	BW	WW	YW	MILK	SC		
+18	-2.7	+50	+88	+28	+0.77		
CW	MARB	RE	FAT	\$W	\$F	\$G	\$B
+26	+0.88	+0.78	-0.019	+50.00	+32.36	+50.49	+92.60



BON VIEW NEW DESIGN 1407
PATERNAL GRANDSIRE OF SILVEIRAS OUT WEST 7026

Reference Sires



Reference Sire **21AR-PENDELTON 7013A**

Reg: 15872967 • Calved: 01/27/2007 • Tat: 7013A

S A V FINAL ANSWER 0035
HARB PENDELTON 765 JH
 H A R B BLACK LADY 375 JH #
 LEACHMAN RIGHT TIME
21AR BLACKCAP F89B
 BLACKCAP EMULATION 89B

SITZ TRAVELER 8180 #
 S A V EMULOUS 8145
 H A R B HIGH PLAINS 975 JH #
 H A R B BLACK LADY 073 JH #
 N BAR EMULATION EXT #
 LEACHMAN ERICA 0025
 EMULATION BANDO 36V
 SCOTCH POWER 70X

CED	BW	WW	YW	MILK	SC		
+9	+5	+42	+75	+19	+99		
CW	MARB	RE	FAT	\$W	\$F	\$G	\$B
+34	+32	+03	+074	+29.21	+19.94	+9.47	+60.03



Reference Sire **VERMILION COWCUTTA X840 2 sons sell**

Reg: 16783726 • Calved: 09/04/2010 • Tat: X840

RITO 112 OF 2536 RITO 616 #
HARB COWCUTTA 776 JH
 H A R B JUANADA ERICA 280 JH
 VERMILION M097 DESIGN P251
VERMILION LADY 7815
 VERMILION LADY 4723

RITO 616 OF 4B20 6807 #
 G A R PRECISION 2536
 SITZ ALLIANCE 6595 #
 JUANADA ERICA 9024 H A R B
 VERMILION NEW DESIGN M097
 VERMILION LASS 7969
 EXAR MILESTONE 2107 #
 VERMILION LADY 2883

CED	BW	WW	YW	MILK	SC		
+9	-.4	+53	+95	+24	—		
CW	MARB	RE	FAT	\$W	\$F	\$G	\$B
I+27	I+.39	I+.02	I+.026	+35.19	+39.96	+21.19	+64.73

Reference Sire **TC ABERDEEN 759 3 sons sell**

Reg: 15840414 • Calved: 01/27/2007 • Tat: 759

B A R EXT TRAVELER 205 #
CRA BEXTOR 872 5205 608 #
 CRA LADY JAYE 608 498 S EASY
 BON VIEW NEW DESIGN 208 #
TC BLACKBIRD 4034 #
 TC BLACKBIRD 1013

N BAR EMULATION EXT #
 B A R QUEEN TRAVELER 3015 #
 G A R SLEEP EASY 1009 #
 H H F 917 LADY 975 498
 B/R NEW DESIGN 036 #
 BON VIEW ERICA 443 #
 S A F FAME #
 TC BLACKBIRD 9032

CED	BW	WW	YW	MILK	SC		
+10	+8	+56	+102	+37	+56		
CW	MARB	RE	FAT	\$W	\$F	\$G	\$B
+22	+47	+1.41	+0.003	+50.20	+47.76	+42.92	+81.31



Reference Sire **KESSLERS FRONT MAN R001 1 son sells**

Reg: 15180461 • Calved: 01/01/2005 • Tat: R001

CONNEALY FOREFRONT #
CONNEALY FRONT PAGE 0228 #
 EBONY LIT OF CONANGA 840 #
 TC RANCHER 056 #
KESSLERS BELL 0024
 KESSLERS BELL 8055

CONNEALY FRONTLINE #
 EILEEN HEARTLAND CONANGA6443
 G D A R TRAVELER 044 #
 EBONY LIL OF CONANGA #
 LEACHMAN PROMPTER #
 T C JESTRESS 6004 #
 B/R NEW DESIGN 036 #
 KESSLERS RAIN BELL 101

CED	BW	WW	YW	MILK	SC		
+10	+0	+51	+85	+42	+66		
CW	MARB	RE	FAT	\$W	\$F	\$G	\$B
+17	+0.4	+0.90	+0.005	+43.81	+28.05	+19.45	+49.69

Reference Sire **SYDGEN MANDATE 6079 2 sons sell**

Reg: 15337433 • Calved: 01/09/2006 • Tat: 6079

S S TRAVELER 6807 T510 #
S S OBJECTIVE T510 0T26 #
 S S MISS RITA R011 7R8
 S A F FOCUS J30
SYDGEN GINA 4235
 INNIWAY MS NEW DESIGN 201

D H D TRAVELER 6807 #
 S S MISS HI SPADE A114 #
 S S RITO RITO R76 R011
 S S MISS ULTRESS U56
 S A F FOCUS OF E R #
 S A F ROYAL QUEEN 5084
 BON VIEW NEW DESIGN 1407 #
 INNIWAY MS LUCY 068

CED	BW	WW	YW	MILK	SC		
+14	+6	+67	+124	+33	+1.32		
CW	MARB	RE	FAT	\$W	\$F	\$G	\$B
+41	+96	-.12	+0.040	+40.79	+72.73	+30.68	+91.85



LOT 1 - 3092



LOT 3 - 3065

1 MDG BEXTOR 3092 BULL
 Reg: 17646515 • Calved: 2/16/2013 • Tattoo: 3092

SIRE: MYTTY BEXTOR 86W

E7 GURU 286	BW: 80
MASTER MONSTER 416	205
DAM: MDG ERICA 6054	WT: 736
M A BROOK CLEO 16	
STEVENS ON LAWMAN 199E	365
MDG ERICA 8084	WT: 1298
M D G ERICA 2051 #	

CED	BW	WW	YW	MILK	MARB	RE	\$B
+7	+0.8	+59	+97	+29	+0.42	+0.36	+64.14

Dam's Production Record: WR 6-104, YR 4-110.

3 MDG IRISH 3065 BULL
 Reg: 17646507 • Calved: 2/12/2013 • Tattoo: 3065

SIRE: CONNEALY IRISH 0204

LEACHMAN RIGHT TIME #	BW: 82
VERMILION RIGHT TIME H918 #	205
DAM: MDG SHOSHONE 5192	WT: 738
VERMILION ROSELLA 6081	
F F WESTERN DIVIDEND Y13 #	365
M D G SHOSHONE 0071	WT: 1231
MDG SHOSHONE 6121 #	

CED	BW	WW	YW	MILK	MARB	RE	\$B
+9	+1.7	+60	+104	+19	+0.37	+0.35	+83.74

Dam's Production Record: WR 7-99, YR 6-102.



LOT 2 - 3013



LOT 4 - G302

2 MDG IRISH 3013 BULL
 Reg: 17646489 • Calved: 2/1/2013 • Tattoo: 3013

SIRE: CONNEALY IRISH 0204

BASIN EXT 661L #	BW: 84
MRG EXT 524G	205
DAM: MDG ERICA 7094 #	WT: 738
MRG ERICA 609G #	
VERMILION RIGHT TIME H918 #	365
MDG ERICA 2099	WT: 1208
M D G ERICA 7018	

CED	BW	WW	YW	MILK	MARB	RE	\$B
+8	+1.7	+53	+96	+26	+0.35	+0.67	+80.65

Dam's Production Record: WR 5-109, YR 4-108
 Pathfinder cow.

4 TLG INCENTIVE G302 BULL
 Reg: 17649634 • Calved: 2/3/2013 • Tattoo: G302

SIRE: CIRCLE A INCENTIVE

TC DIVIDEND 963	BW: 82
F F WESTERN DIVIDEND Y13	205
DAM: TLG LASSIE G709	WT: 785
BT ELBA 113C	
BASIN EMULATION 178C	365
TLG LASSIE G610	WT: 1358
LANDMARK LASSIE 603	

CED	BW	WW	YW	MILK	MARB	RE	\$B
+7	+2.2	+60	+104	+23	+0.46	+0.23	+87.02

Dam's Production Record: WR 5-106, YR 5-105.



LOT 5 - 3035



LOT 7 - 3045

5 MDG BEXTOR 3035 BULL
 Reg: 17646496 • Calved: 2/5/2013 • Tattoo: 3035

SIRE: MYTTY BEXTOR 86W

VERMILION DATELINE 7078 #	BW: 82
VERMILION JP DATELINE L845	205
DAM: MDG ELINE DRICA 7081	WT: 719
VERMILION 155 LASS J P 2022 #	
BASIN EMULATION 178C #	365
MDG ELINE ERICA 9051	WT: 1204
MDG ELINE ERICA 7169	

CED	BW	WW	YW	MILK	MARB	RE	\$B
+7	+1.0	+57	+92	+23	+0.40	+0.12	+54.70

Dam's Production Record: WR 5-99, YR 4-102.

7 MDG WINDY 3045 BULL
 Reg: 17646500 • Calved: 2/7/2013 • Tattoo: 3045

SIRE: MYTTY WINDY 758 12X

S S OBJECTIVE T510 0T26 #	BW: 76
SYDGEN MANDATE 6079	205
DAM: 1026 MDG MS MANDATE	WT: 735
SYDGEN GINA 4235	
KG ONWARD 5246	365
MDG MS PIONEER 9111	WT: 1223
VERMILION MS PIONEER 2318	

CED	BW	WW	YW	MILK	MARB	RE	\$B
+10	+1.0	+51	+94	+24	+0.22	+0.30	+43.49

Dam's Production Record: WR 104, YR 105. First calf heifer.



LOT 6 - 3039



LOT 8 - G306

6 MDG WEST 3039 BULL
 Reg: 17646498 • Calved: 2/6/2013 • Tattoo: 3039

SIRE: SILVEIRAS OUT WEST 7026

GARDENS EXPEDITION #	BW: 82
BASIN EXPEDITION 04P6	205
DAM: MDG EXPEDITION LASS 7202	WT: 781
BASIN EILEENMERE 261J	
BASIN EXT 661L #	365
MDG LASS 4180 #	WT: 1261
M D G LASS 0030	

CED	BW	WW	YW	MILK	MARB	RE	\$B
+11	+0.3	+52	+91	+31	+0.62	+0.57	+87.22

Dam's Production Record: WR 4-108, YR 4-104. Full brother to 2013 Sale Lot 3, 2ND high selling bull bought by F Outfit, Shelby, MT.

8 TLG INCENTIVE G306 BULL
 Reg: 17649412 • Calved: 2/8/2013 • Tattoo: G306

SIRE: CIRCLE A INCENTIVE

H A IMAGE MAKER 0415 #	BW: 84
RR 0415 IMAGE 5922	205
DAM: TLG HEIRESS G926	WT: 776
M T CLOVA PRIDE 8346 #	
VERMILION JP DATELINE L845	365
TLG HEIRESS G515	WT: 1275
TLG HEIRESS G604 #	

CED	BW	WW	YW	MILK	MARB	RE	\$B
+9	+1.5	+60	+96	+24	+0.62	+0.49	+74.45

Dam's Production Record: WR 3-101, YR 111.

9 MDG BEXTOR 3001 BULL
 Reg: 17646484 • Calved: 1/16/2013 • Tattoo: 3001

SIRE: MYTTY BEXTOR 86W

CONNEALY FRONTLINE #	BW: 60
LEACHMAN CASCADE #	205
DAM: MDG BEAUTY 3055	WT: 711
LEACHMAN BLACKCAP 3053	
BASIN EMULATION 178C #	365
M D G BEAUTY 7066	WT: 1146
MDG BEAUTY 5035 #	

CED	BW	WW	YW	MILK	MARB	RE	\$B
+9	+0.5	+51	+85	+30	+0.46	+0.01	+40.58

Twin to Lot 10.

Dam's Production Record: WR 11-101, YR 9-101.



LOT 13 - 316G

10 MDG BEXTOR 3002 BULL
 Reg: 17646485 • Calved: 1/16/2013 • Tattoo: 3002

SIRE: MYTTY BEXTOR 86W

CONNEALY FRONTLINE #	BW: 56
LEACHMAN CASCADE #	205
DAM: MDG BEAUTY 3055	WT: 698
LEACHMAN BLACKCAP 3053	
BASIN EMULATION 178C #	365
M D G BEAUTY 7066	WT: 1180
MDG BEAUTY 5035 #	

CED	BW	WW	YW	MILK	MARB	RE	\$B
+9	+0.5	+51	+85	+30	+0.44	+0.18	+47.03

Twin to Lot 9.

Dam's Production Record: WR 11-101, YR 9-101.

13 MRG BEXTOR 316G BULL
 Reg: 17649733 • Calved: 2/20/2013 • Tattoo: 316G

SIRE: MYTTY BEXTOR 86W

S A F FOCUS OF E R #	BW: 82
MYTTY IN FOCUS #	205
DAM: MRG QUEEN FOCUS 812G	WT: 722
MYTTY COUNTESS 906	
BASIN EMULATION 178C #	365
MRG QUEEN MOTHER 802G	WT: 1264
MRG QUEEN MOTHER 611G #	

CED	BW	WW	YW	MILK	MARB	RE	\$B
+7	+1.5	+56	+89	+26	+0.55	+0.31	+64.60

Dam's Production Record: WR 4-98, YR 2-108.

11 MDG BEXTOR 3079 BULL
 Reg: 17646511 • Calved: 2/14/2013 • Tattoo: 3079

SIRE: MYTTY BEXTOR 86W

GREENBRAE CHAIRMAN #	BW: 76
PREMIER CHAIRMAN 6011A #	205
DAM: MDG ERICA 5001	WT: 639
J K QUEEN 141	
LEACHMAN CASCADE #	365
MDG ERICA 3003	WT: 1095
M D G ERICA 1082	

CED	BW	WW	YW	MILK	MARB	RE	\$B
+10	+0.1	+48	+82	+24	+0.60	+0.25	+45.41

Dam's Production Record: WR 7-98, YR 3-100.

14 MDG IRISH 3058 BULL
 Reg: 17646504 • Calved: 2/10/2013 • Tattoo: 3058

SIRE: CONNEALY IRISH 0204

GREENBRAE CHAIRMAN #	BW: 76
PREMIER CHAIRMAN 6011A #	205
DAM: MDG LASS 3129	WT: 707
J K QUEEN 141	
EMULATION 479B OF JRS	365
MDG LASS 5114	WT: 1200
VERMILION LASS 0345	

CED	BW	WW	YW	MILK	MARB	RE	\$B
+9	+1.1	+48	+87	+24	+0.48	+0.57	+82.93

Dam's Production Record: WR 9-99, YR 8-101.

12 MRG BEXTOR 315G BULL
 Reg: 17649734 • Calved: 2/20/2013 • Tattoo: 315G

SIRE: MYTTY BEXTOR 86W

SILVEIRAS WAY OUT WEST 3527	BW: 68
SILVEIRAS OUT WEST 7026	205
DAM: 103G MRG QUEEN WEST	WT: 734
SILVEIRAS KIND JANIE 5017	
MYTTY IN FOCUS #	365
MRG QUEEN MOTHER 915G	WT: 1174
MRG QUEEN MOTHER 301G	

CED	BW	WW	YW	MILK	MARB	RE	\$B
+13	-0.8	+63	+104	+29	+0.38	+0.19	+33.67

Dam's Production Record: WR 104, YR 105.

First calf heifer.

15 MDG IRISH 3067 BULL
 Reg: 17646508 • Calved: 2/12/2013 • Tattoo: 3067

SIRE: CONNEALY IRISH 0204

ROCKN D AMBUSH 1531 #	BW: 78
J R ROCKN AMBUSH 178H	205
DAM: MDG BLACKBIRD 2127	WT: 690
JOLLY R LADY VICK 084A	
MDG 7068 OF CHAIRMAN	365
MDG HENRIETTA 9171 #	WT: 1109
M D G HENRIETTA 7083 #	

CED	BW	WW	YW	MILK	MARB	RE	\$B
+9	+1.3	+44	+77	+23	+0.46	+0.50	+68.12

Dam's Production Record: WR 10-102, YR 10-100.

16 MDG IRISH 3124

BULL

Reg: 17646526 • Calved: 2/24/2013 • Tattoo: 3134

SIRE: CONNEALY IRISH 0204

TC DIVIDEND 963 #	BW: 80
F F WESTERN DIVIDEND Y13 #	205
BT ELBA 113C	WT: 695
DAM: MDG LASS 3030 #	365
M D G LASS 1065	WT: 1239
PREMIER CHAIRMAN 6011A #	
VERMILION LASS 0345	

CED	BW	WW	YW	MILK	MARB	RE	\$B
+10	+1.1	+49	+88	+21	+0.46	+0.40	+87.06

Dam's Production Record: WR 9-102, YR 8-13.

17 MRG IRISH 304G

BULL

Reg: 17649627 • Calved: 2/2/2013 • Tattoo: 304G

SIRE: CONNEALY IRISH 0204

S A V FINAL ANSWER 0035 #	BW: 86
HARB PENDLETON 765 JH #	205
H A R B BLACK LADY 375 JH #	WT: 644
DAM: MRG PRIDE P 908G	365
MRG PRIDE 309G	WT: 1057
VERMILION RIGHT TIME H918 #	
MRG PRIDE 506G	

CED	BW	WW	YW	MILK	MARB	RE	\$B
+8	+2.7	+49	+91	+21	+0.26	+0.28	+50.90



LOT 18 - 3010

18 MDG WINDY 3010

BULL

Reg: 17646487 • Calved: 2/1/2013 • Tattoo: 3010

SIRE: MYTTY WINDY 758 12X

CONNEALY LEAD ON #	BW: 82
WOODLAWN CHARGE ON 14 #	205
D D PRIDE 211 5175	WT: 711
DAM: MDG CHARGE ON LASS 7038 #	365
MDG LASS 3030 #	WT: 1218
F F WESTERN DIVIDEND Y13 #	
M D G LASS 1065	

CED	BW	WW	YW	MILK	MARB	RE	\$B
+7	+1.1	+46	+83	+24	+0.43	+0.39	+73.30

Dam's Production Record: WR 5-106, YR 4-103.

Pathfinder cow.

19 MDG WINDY 3014

BULL

Reg: 17646490 • Calved: 2/1/2013 • Tattoo: 3014

SIRE: MYTTY WINDY 758 12X

ROCKN D AMBUSH 1531 #	BW: 74
J R ROCKN AMBUSH 178H	205
JOLLY R LADY VICK 084A	WT: 748
DAM: MDG EMPRESS 2068 #	365
MDG EMPRESS 9141	WT: 1164
F F KANSAS 1	
M D G EMPRESS 7076	

CED	BW	WW	YW	MILK	MARB	RE	\$B
+5	+2.7	+40	+75	+22	+0.68	+0.39	+69.49

Dam's Production Record: WR 11-107, NR 9-106

Pathfinder cow who has had several top selling bulls in past sales.



LOT 20 - 3019

20 MDG WINDY 3019

BULL

Reg: 17646492 • Calved: 2/2/2013 • Tattoo: 3019

SIRE: MYTTY WINDY 758 12X

S S OBJECTIVE T510 0T26 #	BW: 76
SYDGEN MANDATE 6079	205
SYDGEN GINA 4235	WT: 734
DAM: 1021 MDG MISS MANDATE	365
MDG ELONEMAR 2028 #	WT: 1182
VERMILION RIGHT TIME H918 #	
M D G ELONEMAR 7120 #	

CED	BW	WW	YW	MILK	MARB	RE	\$B
+10	+1.2	+51	+94	+24	+0.20	+0.28	+38.85

Dam's Production Record: WR 104, YR 102.

First calf heifer.

21 MDG WINDY 3053

BULL

Reg: 17646503 • Calved: 2/8/2013 • Tattoo: 3053

SIRE: MYTTY WINDY 758 12X

CONNEALY ONWARD #	BW: 84
KG ONWARD 5246	205
KG BANDOLIERMERE 0318	WT: 718
DAM: MDG PRIDE 0081	365
MDG PRIDE 4085	WT: 1228
BASIN EXT 661L #	
MDG PRIDE 2138 #	

CED	BW	WW	YW	MILK	MARB	RE	\$B
+8	+1.6	+45	+86	+22	+0.19	+0.42	+57.59

Dam's Production Record: WR 2-104, YR 2-107.

22 MDG WINDY 3091

BULL

Reg: 17646514 • Calved: 2/16/2013 • Tattoo: 3091

SIRE: MYTTY WINDY 758 12X

C R A BEXTOR 872 5205 608 #	BW : 78
MYTTY BEXTOR 86W	205
DAM: 1008 MDG CHLOE	WT: 724
MYTTY PRIDE 32S #	
21AR-PENDELTON 7013A	365
MDG CHLOE 9004	WT: 1090
MDG CHLOE 4062	

CED	BW	WW	YW	MILK	MARB	RE	\$B
+10	+0.9	+47	+86	+25	+0.16	+0.18	+24.14

Dam's Production Record: WR 103.

First calf heifer.



LOT 26 - 3162

23 MDG WINDY 3099

BULL

Reg: 17646516 • Calved: 2/17/2013 • Tattoo: 3099

SIRE: MYTTY WINDY 758 12X

S A V FINAL ANSWER 0035 #	BW : 74
HARB PENDLETON 765 J H #	205
DAM: MDG ERICA 0042	WT: 673
H A R B BLACK LADY 375 J H #	
E7 SUMMIT 42J8	365
MDG ERICA 8095 #	WT: 1204
MDG ERICA 3052	

CED	BW	WW	YW	MILK	MARB	RE	\$B
+10	+0.9	+43	+80	+24	+0.40	+0.28	+63.79

Dam's Production Record: WR 2-103, YR 2-103.

26 MDG ALLIANCE 3162

BULL

Reg: 17646535 • Calved: 3/4/2013 • Tattoo: 3162

SIRE: KG ALLIANCE 0168

S A V FINAL ANSWER 0035 #	BW : 80
HARB PENDLETON 765 J H #	205
DAM: MDG SENTRESS 9023	WT: 711
H A R B BLACK LADY 375 J H #	
VERMILION RIGHT TIME H918 #	365
MDG SENTRESS 3152	WT: 1109
GOLLAHER SENTRESS 6004 #	

CED	BW	WW	YW	MILK	MARB	RE	\$B
+7	+1.5	+62	+111	+29	+0.23	+0.18	+61.75

Dam's Production Record: WR 3-103, YR 3-101.

24 MDG WINDY 3143

BULL

Reg: 17646530 • Calved: 2/25/2013 • Tattoo: 3143

SIRE: MYTTY WINDY 758 12X

HARB PENDLETON 765 J H #	BW : 74
21AR-PENDELTON 7013A	205
DAM: MDG ERICA 0114	WT: 728
21AR BLACKCAP F89B	
VERMILION RIGHT TIME H918 #	365
MDG ERICA 3181 #	WT: 1216
MDG ERICA 8014 #	

CED	BW	WW	YW	MILK	MARB	RE	\$B
+9	+0.5	+49	+86	+20	+0.25	+0.27	+47.07

Dam's Production Record: WR 2-102, YR 1-106.

27 MDG ALLIANCE 3163

BULL

Reg: 17646536 • Calved: 3/4/2013 • Tattoo: 3163

SIRE: KG ALLIANCE 0168

SILVEIRAS WAY OUT WEST 3527	BW : 80
SILVEIRAS OUT WEST 7026	205
DAM: MDG WEST PRIDE 0077	WT: 764
SILVEIRAS KIND JANIE 5017	
BASIN EXT 661L #	365
MDG PRIDE 4102 #	WT: 1193
M D G PRIDE 4031	

CED	BW	WW	YW	MILK	MARB	RE	\$B
+8	+1.0	+54	+98	+34	+0.37	+0.22	+68.57

Dam's Production Record: WR 2-111, YR 2-104.

25 MDG ALLIANCE 3152

BULL

Reg: 17646532 • Calved: 2/27/2013 • Tattoo: 3152

SIRE: KG ALLIANCE 0168

VERMILION DATELINE 7078 #	BW : 80
VERMILION JP DATELINE L845	205
DAM: MDG MS EMULATION 5126 #	WT: 739
VERMILION 155 LASS J P 2022 #	
LEACHMAN CASCADE #	365
MDG MS EMULATION 2096 #	WT: 1169
M D G EMULATION 7080	

CED	BW	WW	YW	MILK	MARB	RE	\$B
+5	+1.9	+53	+101	+29	+0.19	+0.19	+62.54

Dam's Production Record: WR 7-106, YR 4-109.

28 MDG ALLIANCE 3196

BULL

Reg: 17646544 • Calved: 3/14/2013 • Tattoo: 3196

SIRE: KG ALLIANCE 0168

CONNEALY ONWARD #	BW : 78
KG ONWARD 5246	205
DAM: MDG CHLOE 8051	WT: 719
KG BANDOLIERMERE 0318	
BASIN EXT 661L #	365
MDG CHLOE 6068	WT: 1156
MDG CHLOE 4194	

CED	BW	WW	YW	MILK	MARB	RE	\$B
+10	-0.5	+54	+99	+30	+0.29	+0.15	+63.89

Dam's Production Record: WR 4-105, YR 4-102.



LOT 29 - 3011

31 MDG X FACTOR 3021

BULL

Reg: 17646493 • Calved: 2/4/2013 • Tattoo: 3021

SIRE: BOBCAT X FACTOR X22

CONNEALY DANNY BOY #
VERMILION DANNY BOY R526
VERMILION PRIZE 0011
DAM: MDG ELONEMAR 7175
PREMIER CHAIRMAN 6011A #
MDG ELONEMAR 4007
MDG ELONEMAR 2028 #

BW:	76
205	
WT:	701
365	
WT:	1133

CED	BW	WW	YW	MILK	MARB	RE	\$B
+10	-0.1	+52	+84	+18	+0.19	+0.48	+66.10

Dam's Production Record: WR 5-102, YR 4-98.

29 MDG X FACTOR 3011

BULL

Reg: 17646488 • Calved: 2/1/2013 • Tattoo: 3011

SIRE: BOBCAT X FACTOR X22

CONNEALY ONWARD #
KG ONWARD 5246
KG BANDOLIERMERE 0318
DAM: MDG MISS WIX 9144
VERMILION RIGHT TIME H918 #
MDG MISS WIX 2171
MDG MISS WIX 9123

BW:	82
205	
WT:	682
365	
WT:	1146

CED	BW	WW	YW	MILK	MARB	RE	\$B
+7	+1.3	+53	+88	+14	+0.11	+0.54	+55.85

Dam's Production Record: WR 4-98, YR 1-99.

32 MDG X FACTOR 3050

BULL

Reg: 17646501 • Calved: 2/8/2013 • Tattoo: 3050

SIRE: BOBCAT X FACTOR X22

SUMMITCREST HI FLYER 3B18 #
RCC PREFERENCE #
W A F J BAND ELBADINA 97
DAM: MDG PRIME LASS 9042
LEACHMAN HIGH PRIME 3722
MDG PRIME LASS 6218
MDG LASS 7193 #

BW:	74
205	
WT:	694
365	
WT:	1068

CED	BW	WW	YW	MILK	MARB	RE	\$B
+8	+0.7	+51	+92	+17	+0.44	+0.51	+72.59

Dam's Production Record: WR 3-99, YR 2-99.



LOT 30 - 3017

33 MDG X FACTOR 3073

BULL

Reg: 17646509 • Calved: 2/13/2013 • Tattoo: 3073

SIRE: BOBCAT X FACTOR X22

HARB PENDLETON 765 J H #
21AR-PENDELTON 7013A
21AR BLACKCAP F89B
DAM: 1109 MDG PEND PRIDE
E7 SUMMIT 42J8
MDG PRIDE 7027
MDG PRIDE 5162

BW:	78
205	
WT:	739
365	
WT:	1193

CED	BW	WW	YW	MILK	MARB	RE	\$B
+8	+1.0	+51	+85	+19	+0.20	+0.40	+57.84

Dam's Production Record: WR 105, YR 103.

First calf heifer.

30 MDG X FACTOR 3017

BULL

Reg: 17646491 • Calved: 2/1/2013 • Tattoo: 3017

SIRE: BOBCAT X FACTOR X22

SUMMITCREST HIGH PRIME 0H29 #
LEACHMAN HIGH PRIME 3722
LEACHMAN BLACKCAP 6260
DAM: MDG ERICA 7109
VERMILION RIGHT TIME H918 #
M D G ERICA 1082
MDG ERICA 5063

BW:	86
205	
WT:	699
365	
WT:	1174

CED	BW	WW	YW	MILK	MARB	RE	\$B
+7	+1.3	+52	+86	+13	+0.39	+0.60	+77.02

34 MDG X FACTOR 3102

BULL

Reg: 17646519 • Calved: 2/18/2013 • Tattoo: 3102

SIRE: BOBCAT X FACTOR X22

VERMILION DATELINE 7078 #
VERMILION JP DATELINE L845
VERMILION 155 LASS J P 2022 #
DAM: MDG BEAUTY 6113
BASIN EMULATION 178C #
M D G BEAUTY 7066
MDG BEAUTY 5035 #

BW:	80
205	
WT:	652
365	
WT:	1121

CED	BW	WW	YW	MILK	MARB	RE	\$B
+9	+0.3	+45	+79	+14	+0.18	+0.49	+65.56

35 MDG X FACTOR 3137

BULL

Reg: 17646528 • Calved: 2/24/2013 • Tattoo: 3137

SIRE: BOBCAT X FACTOR X22

HARB PENDLETON 765 J H #								BW : 70
21AR-PENDELTON 7013A								205
21AR BLACKCAP F89B								WT: 676
DAM: MDG ERICA 0124								365
PREMIER CHAIRMAN 6011A #								WT: 1143
MDG ERICA 5075								
MDG ERICA 3181 #								
CED	BW	WW	YW	MILK	MARB	RE	\$B	
+10	-0.1	+49	+83	+17	+0.08	+0.36	+50.01	



LOT 39 - G316

36 MDG X FACTOR 3140

BULL

Reg: 17646528 • Calved: 2/24/2013 • Tattoo: 3140

SIRE: BOBCAT X FACTOR X22

CONNEALY FRONTLINE #								BW : 72
LEACHMAN CASCADE #								205
LEACHMAN BLACKCAP 3053								WT: 742
DAM: MDG ELONEMAR 6006 #								365
VERMILION RIGHT TIME H918 #								WT: 1155
MDG ELONEMAR 2028 #								
M D G ELONEMAR 7120 #								
CED	BW	WW	YW	MILK	MARB	RE	\$B	
+11	-0.2	+53	+89	+21	+0.20	+0.33	+64.56	

Dam's Production Record: WR 6-107, YR 4-104.
Pathfinder cow.

39 TLG INCENTIVE G316

BULL

Reg: 17649416 • Calved: 2/14/2013 • Tattoo: G316

SIRE: CIRCLE A INCENTIVE

S A F FOCUS OF E R #								BW : 88
MYTTY IN FOCUS #								205
MYTTY COUNTESS 906								WT: 690
DAM: TLG HEIRESS FOCUS G804								365
VERMILION RIGHT TIME H918 #								WT: 1248
TLG HEIRESS G203								
TLG HEIRESS G608								
CED	BW	WW	YW	MILK	MARB	RE	\$B	
+7	+2.8	+57	+100	+21	+0.76	+0.24	+84.03	

Dam's Production Record: WR 4-99, YR 2-105.

37 MDG X FACTOR 3161

BULL

Reg: 17646534 • Calved: 3/3/2013 • Tattoo: 3161

SIRE: BOBCAT X FACTOR X22

S A V FINAL ANSWER 0035 #								BW : 84
HARB PENDLETON 765 J H #								205
H A R B BLACK LADY 375 J H #								WT: 704
DAM: MDG EMULATION 0011								365
LEACHMAN CASCADE #								WT: 1206
MDG EMULATION 3185 #								
M D G LOVANA 4026								
CED	BW	WW	YW	MILK	MARB	RE	\$B	
+7	+1.8	+49	+86	+24	+0.15	+0.47	+60.23	

Dam's Production Record: WR 2-107, YR 1-105.

40 MDG INCENTIVE 3109

BULL

Reg: 17646521 • Calved: 2/19/2013 • Tattoo: 3109

SIRE: CIRCLE A INCENTIVE

VERMILION JUST IN TIME								BW : 82
VERMILION JUST IN TIME T264								205
VERMILION PRIDE 1446 #								WT: 685
DAM: MDG CHLOE 9062								365
STEVENSON BRUNO 561G #								WT: 1162
M D G CHLOE 0004								
MDG CHLOE 6162								
CED	BW	WW	YW	MILK	MARB	RE	\$B	
+7	+2.6	+50	+91	+22	+0.66	+0.44	+65.04	

38 MDG INCENTIVE 3082

BULL

Reg: 17646512 • Calved: 2/15/2013 • Tattoo: 3082

SIRE: CIRCLE A INCENTIVE

G D A R TRAVELER 561 #								BW : 84
E7 SUMMIT 42J8								205
E7 MARLAMERE 2J8 #								WT: 729
DAM: MDG PRIDE 7027								365
LEACHMAN CASCADE #								WT: 1142
MDG PRIDE 5162								
MDG PRIDE 2057								
CED	BW	WW	YW	MILK	MARB	RE	\$B	
+7	+2.7	+53	+91	+24	+0.77	+0.32	+71.00	

Dam's Production Record: WR 5-103, YR 5-103.

41 MDG INCENTIVE 3129

BULL

Reg: 17646525 • Calved: 2/22/2013 • Tattoo: 3129

SIRE: CIRCLE A INCENTIVE

BROOKS EXT 792 #								BW : 80
BASIN EXT 661L #								205
BASIN CAMILLA 472F #								WT: 735
DAM: MDG WIX 6090 #								365
VERMILION RIGHT TIME H918 #								WT: 1071
MDG MISS WIX 4008								
M D G MISS WIX 7065 #								
CED	BW	WW	YW	MILK	MARB	RE	\$B	
+9	+1.1	+53	+81	+30	+0.57	+0.42	+59.93	

Dam's Production Record: WR 6-106, YR 5-103.
Pathfinder cow.

42 MDG IRON 3038 BULL
 Reg: 17646497 • Calved: 2/6/2013 • Tattoo: 3038

SIRE: JF IRON SIGHT Y46

CONNEALY ONWARD #	BW: 74
KG ONWARD 5246	205
DAM: MDG BEAUTY 9077	WT: 681
KG BANDOLIERMERE 0318	365
LEACHMAN CASCADE #	WT: 1081
MDG BEAUTY 3055	
M D G BEAUTY 7066	

CED	BW	WW	YW	MILK	MARB	RE	\$B
+10	-0.1	+51	+90	+21	+0.35	+0.16	+55.80

Dam's Production Record: WR 3-103, YR 2-105.

46 MDG IRON 3074 BULL
 Reg: 17646510 • Calved: 2/14/2013 • Tattoo: 3074

SIRE: JF IRON SIGHT Y46

VERMILION JUST IN TIME	BW: 76
VERMILION JUST IN TIME T264	205
DAM: MDG LASS 9172	WT: 691
VERMILION PRIDE 1446 #	365
BASIN EXT 661L #	WT: 1163
MDG LASS 5012	
MDG LASS 3129	

CED	BW	WW	YW	MILK	MARB	RE	\$B
+8	+0.2	+51	+89	+24	+0.57	+0.16	+72.86

Dam's Production Record: WR 3-103, YR 2-104.

43 MDG IRON 3040 BULL
 Reg: 17646499 • Calved: 2/7/2013 • Tattoo: 3040

SIRE: JF IRON SIGHT Y46

HARB PENDLETON 765 J H #	BW: 78
21AR-PENDELTON 7013A	205
DAM: MDG BEAUTY 9017	WT: 685
21AR BLACKCAP F89B	365
J R ROCKN AMBUSH 178H	WT: 1143
M D G BEAUTY 0113	
M D G BEAUTY 4056	

CED	BW	WW	YW	MILK	MARB	RE	\$B
+7	+0.6	+49	+80	+20	+0.18	+0.14	+45.18

Dam's Production Record: WR 2-99, YR 1-99.

47 MDG IRON 3118 BULL
 Reg: 17646523 • Calved: 2/19/2013 • Tattoo: 3118

SIRE: JF IRON SIGHT Y46

CONNEALY FRONTLINE #	BW: 72
LEACHMAN CASCADE #	205
DAM: MDG SHOSHONE 6066	WT: 776
LEACHMAN BLACKCAP 3053	365
F F WESTERN DIVIDEND Y13 #	WT: 1189
M D G SHOSHONE 0071	
MDG SHOSHONE 6121 #	

CED	BW	WW	YW	MILK	MARB	RE	\$B
+9	+0.5	+49	+85	+21	+0.28	+0.09	+61.67

Dam's Production Record: WR 4-99, YR 2-101.

44 MDG IRON 3051 BULL
 Reg: 17646502 • Calved: 2/8/2013 • Tattoo: 3051

SIRE: JF IRON SIGHT Y46

VERMILION DATELINE 7078 #	BW: 78
VERMILION JP DATELINE L845	205
DAM: MDG LASS 8126	WT: 662
VERMILION 155 LASS J P 2022 #	365
BASIN EMULATION 178C #	WT: 1121
MDG LASS 9060	
M D G LASS 4024	

CED	BW	WW	YW	MILK	MARB	RE	\$B
+9	+0.0	+52	+86	+14	+0.30	+0.11	+50.71

Dam's Production Record: WR 4-98, YR 2-98.

48 MDG IRON 3150 BULL
 Reg: 17646531 • Calved: 2/27/2013 • Tattoo: 3150

SIRE: JF IRON SIGHT Y46

CONNEALY FRONTLINE #	BW: 84
LEACHMAN CASCADE #	205
DAM: MDG BLACKBIRD 4059	WT: 690
LEACHMAN BLACKCAP 3053	365
PREMIER CHAIRMAN 6011A #	WT: 1132
MDG BLACKBIRD 2066	
M D G HENRIETTA 7083 #	

CED	BW	WW	YW	MILK	MARB	RE	\$B
+8	+0.7	+48	+81	+19	+0.46	+0.30	+65.50

Dam's Production Record: WR 8-98, YR 3-100.

45 MDG IRON 3062 BULL
 Reg: 17646505 • Calved: 2/11/2013 • Tattoo: 3062

SIRE: JF IRON SIGHT Y46

BROOKS EXT 792 #	BW: 80
BASIN EXT 661L #	205
DAM: MDG BLACKBIRD 6032	WT: 691
BASIN CAMILLA 472F #	365
LEACHMAN CASCADE #	WT: 1078
MDG BLACKBIRD 4059	
MDG BLACKBIRD 2066	

CED	BW	WW	YW	MILK	MARB	RE	\$B
+10	-0.6	+49	+85	+23	+0.27	+0.26	+52.01

Dam's Production Record: WR 6-98, YR 3-101.

49 TLG IRON G328 BULL
 Reg: 17650556 • Calved: 3/2/2013 • Tattoo: G328

SIRE: JF IRON SIGHT Y46

BROOKS EXT 792 #	BW: 84
BASIN EXT 661L #	205
DAM: TLG CLOVA PRIDE G607	WT: 765
BASIN CAMILLA 472F #	365
BASIN EMULATION 178C #	WT: 1240
TLG SENTRY G607	
M D G PINE SENTRY 7062	

CED	BW	WW	YW	MILK	MARB	RE	\$B
+8	+0.2	+55	+89	+25	+0.25	+0.21	+59.94

Dam's Production Record: WR 6-102, YR 3-105.

50 MDG IRON 3185 BULL

Reg: 17646541 • Calved: 3/11/2013 • Tattoo: 3185

SIRE: JF IRON SIGHT Y46

CONNEALY ONWARD #	BW: 70
KG ONWARD 5246	205
DAM: MDG BLUEBLOOD 9211	WT: 701
BASIN EXT 661L #	365
MDG BLUEBLOOD 6022 #	WT: 1075
MDG BLUEBLOOD 4002 #	

CED	BW	WW	YW	MILK	MARB	RE	\$B
+11	-0.7	+54	+92	+22	+0.25	+0.18	+41.25

Dam's Production Record: WR 3-100, YR 1-108.

51 MDG IRON 3193 BULL

Reg: 17646543 • Calved: 3/14/2013 • Tattoo: 3193

SIRE: JF IRON SIGHT Y46

CONNEALY FRONTLINE #	BW: 84
LEACHMAN CASCADE #	205
DAM: MDG BLUEBLOOD 4208 #	WT: 739
LEACHMAN BLACKCAP 3053	365
VERMILION RIGHT TIME H918 #	WT: 1198
M D G BLUEBLOOD 1184 #	
MDG BLUEBLOOD 9138 #	

CED	BW	WW	YW	MILK	MARB	RE	\$B
+6	+1.8	+56	+96	+21	+0.22	+0.08	+61.81

Dam's Production Record: WR 8-106 YR 7-106.
Pathfinder cow.

52 MDG IRON 3197 BULL

Reg: 17646545 • Calved: 3/15/2013 • Tattoo: 3197

SIRE: JF IRON SIGHT Y46

C R A BEXTOR 872 5205 608 #	BW: 82
MYTTY BEXTOR 86W	205
DAM: 1046 MDG MISS BEXTOR	WT: 774
MYTTY PRIDE 32S #	365
VERMILION DANNY BOY R526	WT: 1193
MDG MISS WIX 7168 #	
MDG MISS WIX 4140	

CED	BW	WW	YW	MILK	MARB	RE	\$B
+5	+1.8	+65	+106	+25	+0.19	+0.12	+46.80

Dam's Production Record: WR 110, YR 103.
Fist calf heifer.

53 MDG IRON 3202 BULL

Reg: 17646546 • Calved: 3/16/2013 • Tattoo: 3202

SIRE: JF IRON SIGHT Y46

SUMMITCREST HI FLYER 3B18 #	BW: 68
RCC PREFERENCE #	205
DAM: MDG WIX 0076	WT: 743
W A FJ BAND ELBADINA 97	365
BASIN EXT 661L #	WT: 1135
MDG WIX 6090	
MDG MISS WIX 4008	

CED	BW	WW	YW	MILK	MARB	RE	\$B
+10	-0.7	+59	+98	+24	+0.19	+0.24	+43.76

Dam's Production Record: WR 2-104, YR 2-98.

54 MDG ABERDEEN 3026 BULL

Reg: 17646494 • Calved: 2/4/2013 • Tattoo: 3026

SIRE: TC ABERDEEN 759 #

SILVEIRAS WAY OUT WEST 3527	BW: 72
SILVEIRAS OUT WEST 7026	205
DAM: 1045 MDG WEST PRIDE	WT: 698
SILVEIRAS KIND JANIE 5017	365
BASIN EXT 661L #	WT: 1120
MDG PRIDE 4102 #	
M D G PRIDE 4031	

CED	BW	WW	YW	MILK	MARB	RE	\$B
+11	+0.4	+49	+88	+33	+0.18	+0.62	+36.61

Dam's Production Record: WR 99, YR 97.
First calf heifer.

55 MDG ABERDEEN 3032 BULL

Reg: 17646495 • Calved: 2/5/2013 • Tattoo: 3032

SIRE: TC ABERDEEN 759

HARB PENDLETON 765 J H #	BW: 80
21AR-PENDELTON 7013A	205
DAM: 1087 MDG PEND BEAUTY	WT: 702
21AR BLACKCAP F89B	365
LEACHMAN CASCADE #	WT: 1254
MDG BEAUTY 5027	
MDG BEAUTY 8059	

CED	BW	WW	YW	MILK	MARB	RE	\$B
+8	+2.1	+48	+93	+30	+0.20	+0.71	+54.36

Dam's Production Record: WR 100, YR 109.
First calf heifer.

56 MDG ABERDEEN 3101 BULL

Reg: 17646518 • Calved: 2/17/2013 • Tattoo: 3101

SIRE: TC ABERDEEN 759 #

CONNEALY DANNY BOY #	BW: 88
VERMILION DANNY BOY R526	205
DAM: MDG ESPA 8108	WT: 730
VERMILION PRIZE 0011	365
FF KANSAS 1	WT: 1213
MDG ESPA 9066	
MDG ESPA 6110 #	

CED	BW	WW	YW	MILK	MARB	RE	\$B
+5	+2.1	+53	+93	+27	+0.51	+0.82	+82.23

Dam's Production Record: WR 4-104, YR 3-103.

57 MDG MANDATE 3115 BULL

Reg: 17646522 • Calved: 2/19/2013 • Tattoo: 3115

SIRE: SYDGEN MANDATE 6079

TC STOCKMAN 365 #	BW: 80
G 13 STRUCTURE #	205
DAM: MDG STRUCTURE 7098	WT: 739
G 13 TRAVELER 9428 #	365
MDG 7068 OF CHAIRMAN	WT: 1283
MDG HENRIETTA 9171 #	
M D G HENRIETTA 7083 #	

CED	BW	WW	YW	MILK	MARB	RE	\$B
+8	+1.8	+55	+92	+28	+0.53	+0.14	+85.16

Dam's Production Record: WR 5-100, YR 4-99.



LOT 58 - 303G

58 MRG MANDATE 303G BULL
 Reg: 17649356 • Calved: 2/2/2013 • Tattoo: 303G

SIRE: SYDGEN MANDATE 6079

SUMMITCREST HI FLYER 3B18 #	BW: 74
RCC PREFERENCE #	205
W A F J BAND ELBADINA 97	WT: 670
DAM: MRG MISS PREFERENCE 811G	
VERMILION RIGHT TIME H918 #	365
MRG MISS VICKI 307G	WT: 1153
MRG MISS VICKI 602G	

CED	BW	WW	YW	MILK	MARB	RE	\$B
+11	+0.8	+57	+106	+24	+0.40	+0.05	+59.50

Dam's Production Record: WR 4-98, YR 2-100.

59 MDG PENDELTON 3100 BULL
 Reg: 17646517 • Calved: 2/17/2013 • Tattoo: 3100

SIRE: 21AR-PENDELTON 7013A

CONNEALY ONWARD #	BW: 88
KG ONWARD 5246	205
KG BANDOLIERMERE 0318	WT: 663
DAM: MDG BEAUTY 8106	
VERMILION JP DATELINE L845	365
MDG BEAUTY 6113	WT: 1111
M D G BEAUTY 7066	

CED	BW	WW	YW	MILK	MARB	RE	\$B
+4	+2.5	+43	+77	+16	+0.23	+0.19	+57.41

Dam's Production Record: WR 4-99, YR 2-100.

60 MDG PENDLETON 3141 BULL
 Reg: 17646529 • Calved: 2/25/2013 • Tattoo: 3141

SIRE: 21AR-PENDELTON 7013A

VERMILION DATELINE 7078 #	BW: 84
VERMILION JP DATELINE L845	205
VERMILION 155 LASS J P 2022 #	WT: 700
DAM: MDG PRIDE 7116	
J R ROCKN AMBUSH 178H	365
M D G PRIDE 0100	WT: 1159
MDG PRIDE 6066 #	

CED	BW	WW	YW	MILK	MARB	RE	\$B
+5	+1.8	+44	+77	+17	+0.28	+0.05	+60.54

Dam's Production Record: WR 5-98, YR 3-100.

61 MDG PENDLETON 3164 BULL
 Reg: 17646537 • Calved: 3/5/2013 • Tattoo: 3164

SIRE: 21AR-PENDELTON 7013A

LEACHMAN RIGHT TIME #	BW: 80
VERMILION RIGHT TIME H918 #	205
VERMILION ROSELLA 6081	WT: 713
DAM: MDG BLACKBIRD 4058 #	
M D G FRANCHISE 3069	365
MDG BLACKBIRD 8097	WT: 1156
M D G BLACKBIRD 7022 #	

CED	BW	WW	YW	MILK	MARB	RE	\$B
+5	+2.3	+50	+84	+16	+0.19	+0.17	+61.09

Dam's Production Record: WR 8-103, YR 5-104.

62 MDG PENDLETON 3165 BULL
 Reg: 17651186 • Calved: 3/5/2013 • Tattoo: 3165

SIRE: 21AR-PENDELTON 7013A

LEACHMAN RIGHT TIME #	BW: 82
VERMILION RIGHT TIME H918 #	205
VERMILION ROSELLA 6081	WT: 755
DAM: M R G ERICA 123G #	
BASIN EMULATION 178C #	365
M R G ERICA 708G #	WT: 1219
M R G ERICA 16G	

CED	BW	WW	YW	MILK	MARB	RE	\$B
+4	+2.2	+53	+86	+19	+0.24	+0.07	+62.00

Dam's Production Record: WR 11-108, YR 10-105.
 Pathfinder cow.

63 MDG PENDLETON 3189 BULL
 Reg: 17646542 • Calved: 3/12/2013 • Tattoo: 3189

SIRE: 21AR-PENDELTON 7013A

LEACHMAN RIGHT TIME #	BW: 78
VERMILION RIGHT TIME H918 #	205
VERMILION ROSELLA 6081	WT: 707
DAM: MDG PRIDE 2138 #	
PREMIER CHAIRMAN 6011A #	365
MDG PRIDE 8006	WT: 1126
MDG PRIDE 6077	

CED	BW	WW	YW	MILK	MARB	RE	\$B
+6	+1.7	+50	+82	+16	+0.14	+0.00	+47.61

Dam's Production Record: WR 9-103, YR 8-101.
 Pathfinder cow.

64 TLG FRONTMAN G313 BULL
 Reg: 17649367 • Calved: 2/12/2013 • Tattoo: G313

SIRE: KESSLERS FRONTMAN R001

CONNEALY FRONTLINE #	BW: 80
LEACHMAN CASCADE #	205
LEACHMAN BLACKCAP 3053	WT: 748
DAM: TLG SENTRY G411 #	
BASIN EMULATION 178C #	365
TLG SENTRY G809	WT: 1164
T L G SENTRY G25	

CED	BW	WW	YW	MILK	MARB	RE	\$B
+7	+0.9	+49	+81	+32	+0.07	+0.52	+50.74

Dam's Production Record: WR 8-105, YR 8-102
 Pathfinder cow.



LOT 65 - G303

68

TLG DIVIDE G323

BULL

Reg: 17649787 • Calved: 2/20/2013 • Tattoo: G323

SIRE: FF DIVIDE X1

SUMMITCREST HIGH PRIME 0H29 #
LEACHMAN HIGH PRIME 3722
LEACHMAN BLACKCAP 6260
DAM: TLG HEIRESS G618 #
BASIN EXT 661L #
TLG HEIRESS G409
TLG HEIRESS G203

BW:	82
205	
WT:	720
365	
WT:	1186

CED	BW	WW	YW	MILK	MARB	RE	\$B
+7	+1.5	+52	+87	+24	+0.40	+0.33	+66.74

Dam's Production Record: WR 6-105, YR 4-104.
Pathfinder cow.

65

TLG DIVIDE G303

BULL

Reg: 17649790 • Calved: 2/4/2013 • Tattoo: G303

SIRE: FF DIVIDE X1

CONNEALY ONWARD #
KG ONWARD 5246
DAM: G107 TLG SENTRY ONWARD
RR 0415 IMAGE 5922
TLG SENTRY G725
TLG SENTRY G809

BW:	84
205	
WT:	861
365	
WT:	1272

CED	BW	WW	YW	MILK	MARB	RE	\$B
+4	+2.5	+64	+103	+26	+0.31	+0.36	+59.95

Dam's Production Record: WR 122, YR 110.
First calf heifer.

69

TLG DIVIDE G324

BULL

Reg: 17649788 • Calved: 2/20/2013 • Tattoo: G324

SIRE: FF DIVIDE X1

CONNEALY FRONT PAGE 0228 #
KESSLERS FRONTMAN R001
KESSLERS BELL 0024
DAM: G118 TLG SENTRY FRONTMAN
KG ONWARD 5246
TLG SENTRY G918 #
TLG SENTRY G523

BW:	66
205	
WT:	731
365	
WT:	1182

CED	BW	WW	YW	MILK	MARB	RE	\$B
+10	+0.2	+54	+92	+30	+0.26	+0.33	+48.64

Dam's Production Record: WR 104, YR 102.
First calf heifer.

66

MDG DIVIDE 3105

BULL

Reg: 17646520 • Calved: 2/18/2013 • Tattoo: 3105

SIRE: FF DIVIDE X1

VERMILION JUST IN TIME
VERMILION JUST IN TIME T264
DAM: 1054 MDG LASS
VERMILION PRIDE 1446 #
PREMIER CHAIRMAN 6011A #
MDG LASS 3129
MDG LASS 5114

BW:	86
205	
WT:	809
365	
WT:	1345

CED	BW	WW	YW	MILK	MARB	RE	\$B
+2	+3.5	+57	+96	+27	+0.23	+0.50	+63.97

Dam's Production Record: WR 115, YR 116.
First calf heifer.

70

MRG DIVIDE 317G

BULL

Reg: 17649789 • Calved: 2/21/2013 • Tattoo: 317G

SIRE: FF DIVIDE X1

E7 GURU 286
MASTER MONSTER 416
M A BROOK CLEO 16
DAM: MRG LASS 011G
PREMIER CHAIRMAN 6011A #
MRG LASS 401G #
MRG LASS 226G

BW:	82
205	
WT:	735
365	
WT:	1225

CED	BW	WW	YW	MILK	MARB	RE	\$B
+5	+1.9	+53	+92	+25	+0.25	+0.42	+57.28

Dam's Production Record: WR 2-103, YR 1-106.

67

MDG DIVIDE 3121

BULL

Reg: 17646524 • Calved: 2/20/2013 • Tattoo: 3121

SIRE: FF DIVIDE X1

CONNEALY FRONTLINE #
LEACHMAN CASCADE #
DAM: MDG BEAUTY 6031
LEACHMAN BLACKCAP 3053
VERMILION 3548 DRIVER 5655
MDG BEAUTY 8059
M D G BEAUTY 2106 #

BW:	78
205	
WT:	709
365	
WT:	1138

CED	BW	WW	YW	MILK	MARB	RE	\$B
+9	+0.5	+50	+86	+26	+0.38	+0.40	+59.48

Dam's Production Record: WR 5-102, YR 4-102.

71

MDG WEST 3005

BULL

Reg: 17646486 • Calved: 1/29/2013 • Tattoo: 3005

SIRE: SILVEIRAS OUT WEST 7026

LEACHMAN RIGHT TIME #
VERMILION RIGHT TIME H918 #
VERMILION ROSELLA 6081
DAM: MDG ERICA 3052
PREMIER CHAIRMAN 6011A #
M D G ERICA 7018
M D G ERICA 7090 #

BW:	88
205	
WT:	693
365	
WT:	1141

CED	BW	WW	YW	MILK	MARB	RE	\$B
+7	+2.3	+51	+80	+21	+0.49	+0.30	+69.69

Dam's Production Record: WR 9-102, YR 7-100.



LOT 72 - 3047

72 MDG WEST 3047 BULL

Reg: 17650558 • Calved: 2/8/2013 • Tattoo: 3047

SIRE: SILVEIRAS OUT WEST 7026

E7 SUMMIT 42J8	G D A R TRAVELER 561 #	BW : 80
DAM: MDG PRIDE 7086	E7 MARLAMERE 2J8 #	205
M D G PRIDE 0034	F F WESTERN DIVIDEND Y13 #	WT: 674
	M D G PRIDE 8090	365
		WT: 1178

CED	BW	WW	YW	MILK	MARB	RE	\$B
+10	+1.0	+43	+76	+23	+0.45	+0.25	+68.61

Dam's Production Record: WR 5-101, YR 5-103.



LOT 75 - 3154

75 MDG COWCUTTA 3154 BULL

Reg: 17646533 • Calved: 2/28/2013 • Tattoo: 3154

SIRE: VERMILION COWCUTTA X840

PREMIER CHAIRMAN 6011A #	GREENBRAE CHAIRMAN #	BW : 66
DAM: MDG PRIDE 5092	J K QUEEN 141	205
M D G PRIDE 0034	F F WESTERN DIVIDEND Y13 #	WT: 652
	M D G PRIDE 8090	365
		WT: 1143

CED	BW	WW	YW	MILK	MARB	RE	\$B
+12	-1.8	+41	+70	+21	+0.10	+0.21	+35.68

Dam's Production Record: WR 7-96, YR 2-99.

73 MDG WEST 3089 BULL

Reg: 17646513 • Calved: 2/16/2013 • Tattoo: 3089

SIRE: SILVEIRAS OUT WEST 7026

VERMILION RIGHT TIME H918 #	LEACHMAN RIGHT TIME #	BW : 78
DAM: MDG MISS WIX 4008	VERMILION ROSELLA 6081	205
M D G MISS WIX 7065 #	PREMIER CHAIRMAN 6011A #	WT: 747
	M D G MISS WIX 7056 #	365
		WT: 1163

CED	BW	WW	YW	MILK	MARB	RE	\$B
+11	+0.2	+53	+82	+25	+0.44	+0.36	+72.27

Dam's Production Record: WR 8-108, YR 7-104.

76 MDG COWCUTTA 3182 BULL

Reg: 17646540 • Calved: 3/10/2013 • Tattoo: 3182

SIRE: VERMILION COWCUTTA X840

KG ONWARD 5246	CONNELLY ONWARD #	BW : 80
DAM: MDG PRIDE 0073	KG BANDOLIERMERE 0318	205
MDG PRIDE 4182	BASIN EXT 661L #	WT: 741
	MDG PRIDE 2057	365
		WT: 1202

CED	BW	WW	YW	MILK	MARB	RE	\$B
+7	+0.8	+55	+93	+24	+0.11	+0.16	+43.80

Dam's Production Record: WR 2-102, YR 2-101.

74 MDG WEST 3149 BULL

Reg: 17650559 • Calved: 2/27/2013 • Tattoo: 3149

SIRE: SILVEIRAS OUT WEST 7026

PREMIER CHAIRMAN 6011A #	GREENBRAE CHAIRMAN #	BW : 86
DAM: MDG ERICA 5075	J K QUEEN 141	205
MDG ERICA 3181 #	VERMILION RIGHT TIME H918 #	WT: 684
	MDG ERICA 8014 #	365
		WT: 1103

CED	BW	WW	YW	MILK	MARB	RE	\$B
+9	+1.6	+46	+78	+23	+0.49	+0.38	+66.32

Dam's Production Record: WR 7-100, YR 5-102.

Thank you to our ranch veterinarian:

Clint Hilt, DVM

Hilt Veterinary Service LLC.

Dutton, MT 59433

406.463.2426

We appreciate all you dedication

to our program

whether it's for the cattle or horses.

Thank you...


Thank you to all who make our sale possible. From you the buyers, to the trucker, the lunch help and cleaning crew we appreciate you all. For the professionals we hire to work with us on herd health, feeding, veterinary needs, and sale preparation we want to thank you. Without the help of our crew, family, friends and neighbors during, calving, branding, weighing and shipping we would never be able to pull off these sales.

To the friends who give their time the weekend before the sale to help Mike & Ted clean, retag, and feed the bulls before the sale and then work sale day we owe you!

To our sale day crew on the auction block and the ring men we appreciate your efforts in running a smooth sale.

For the great photos of the bulls we thank John Goggins, and thank you to our auctioneer, Roger for always doing a great job.

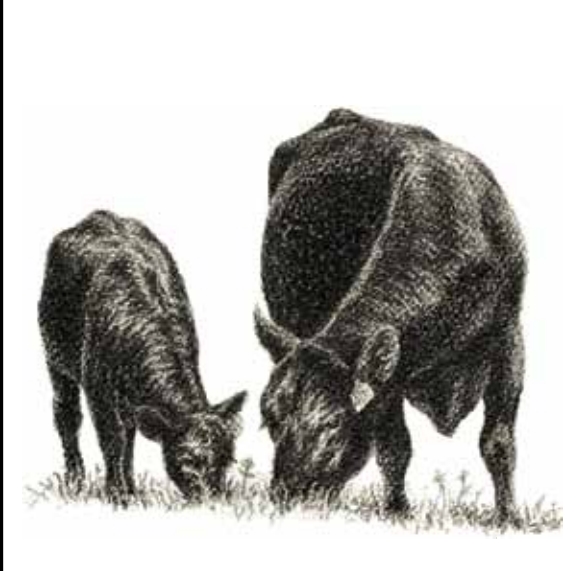
To those of you who are joining us on sale day our heartfelt thanks for your support.



WestFeeds[®]

"Excellence in Animal Nutrition"

Tubs Blocks Minerals Range & Feedlot



Equine Feed Beef Energy Feed *Goat Feed Swine Feed Poultry*

Dairy Proteins Show Feed Pet Food

Shane Moran
Territory Manager


Westfeeds, Inc.
Great Falls
(cell) 406-320-2580

Karnell Perry
Manager/
Feed Store
406-268-1543



**MOUNTAIN VIEW CO-OP/
FEED STORE**

*Thanks to Karnell and crew
for furnishing the donuts and
coffee sale morning*



AGRIBASICS
FERTILIZER INC.

Thanks for your help!


Rod Brooks, 406-761-4024
Great Falls, MT 59406

GOLLAHER RANCH

3112 Cascade Hound Creek Road
Cascade, MT 59421

GOLLAHER RANCH
75 Yearling
Angus Bulls Sell

**For dollars
invested in bulls,
we offer the best value
you will find anywhere.**



**Join us at the ranch
April 7, 2014**

**Myrle, Delight & Ted Gollaher
406.468.2273
Mike & Barbara Jo
406.468.0079**

Reference Sires



Reference Sire **MYTTY BEXTOR 86W**

Reg: 16409704 • Calved: 01/23/2009 • Tat: 86W

C R A BEXTOR 872 5205 608 #
 B A R EXT TRAVELER 205 #
 CRA LADY JAYE 608 498 S EASY
 MYTTY IN FOCUS #
MYTTY PRIDE 32S #
 ADAMS DURATREND PRIDE 6113

N B A R EMULATION EXT #
 B A R QUEEN TRAVELER 3015 #
 G A R SLEEP EASY 1009 #
 H H F 917 LADY 975 498
 S A F FOCUS OF E R #
 MYTTY COUNTESS 906
 H B R DURATREND 2315
 L F PRIDE 3113

CED	BW	WW	YW	MILK	SC		
+9	+.7	+68	+109	+35	+.84		
CW	MARB	RE	FAT	\$W	\$F	\$G	\$B
+0	+.74	+.44	+.016	+57.85	+50.96	+44.29	+51.21



Reference Sire **BOBCAT X FACTOR X22**

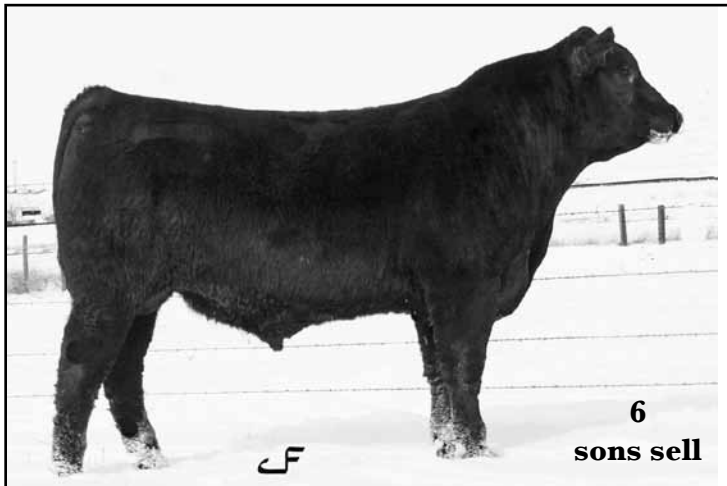
Reg: 16803800 • Calved: 02/19/2010 • Tat: X22

VERMILION X FACTOR #
 NICHOLS EXTRA K205 #
 VERMILION LADY 2888

BOBCAT BARBARA 826
 VERMILION BLANCHE 9888

NICHOLS EXTRA H6 #
 NICHOLS BLACK HEIRESS F346
 VERMILION DATELINE 7078 #
 VERMILION LADY 7993 #
 CONNEALY TIMELINE #
 ENERGY OF CONANGA 4851
 GIBB BANDO 598-1507 #
 VERMILION BLANCHE 5807

CED	BW	WW	YW	MILK	SC		
+11	-.6	+54	+92	+16	+.57		
CW	MARB	RE	FAT	\$W	\$F	\$G	\$B
+46	+.33	+.86	+.013	+40.25	+35.53	+27.55	+89.60



Reference Sire **FF DIVIDE X1**

Reg: 16692673 • Calved: 01/01/2010 • Tat: X1

S A V BISMARCK 5682
 G A R GRID MAKER #
 S A V ABIGALE 0451

JF EMPRESS U4
 MF DESTROYER 093 #
 FF EMPRESS S13

G D A R TRAVELER 044 #
 G A R PRECISION 2536
 SCHOENES FIX IT 826F #
 S A V ABIGALE 6062
 EXAR SUDDEN IMPACT 1537
 M F CHERRY 115
 ACF HIGH PRIME 2245
 JJ EMPRESS P46

CED	BW	WW	YW	MILK	SC		
+8	+1.0	+58	+101	+27	+.52		
CW	MARB	RE	FAT	\$W	\$F	\$G	\$B
+29	+.53	+.70	+.001	+43.04	+45.37	+37.55	+84.14



Reference Sire **JF IRON SIGHT Y46**

Reg: 17012432 • Calved: 01/26/2011 • Tat: Y46

S A V IRON MOUNTAIN 8066
 TC GRIDIRON 258 #
 S A V MADAME PRIDE 3249

JAF EVERELDA ENTENSE 15U
 WOODHILL FORESIGHT #
 BT EVERELDA ENTENSE 526M

G A R GRID MAKER #
 TC BLACKBIRD 7049 #
 S A V 8180 TRAVELER 004 #
 S A V MADAME PRIDE 8264
 PAPA FORTE 1921 #
 BON VIEW GAMMER 85
 LEACHMAN RIGHT TIME #
 SITZ EVERELDA ENTENSE 1905

CED	BW	WW	YW	MILK	SC		
+10	-.4	+63	+104	+20	—		
CW	MARB	RE	FAT	\$W	\$F	\$G	\$B
+32	+.47	+.26	+.015	+39.95	+46.80	+28.13	+77.97

Reference Sires



6
sons sell

Reference Sire **CIRCLE A INCENTIVE**

Reg: 16005537 • Calved: 12/19/2007 • Tat: 7594

- S S TRAVELER 6807 T510 #
- S S OBJECTIVE T510 0T26 #**
- S S MISS RITA R011 7R8
- C R A BEXTOR 872 5205 608 #
- CIRCLE A BEAUTY 5566 #**
- M G S A BEAUTY 4007
- D H D TRAVELER 6807 #
- S S MISS HI SPADE A114 #
- S S RITO RITO R76 R011
- S S MISS ULTRESS U56
- B A R EXT TRAVELER 205 #
- CRA LADY JAYE 608 498 S EASY
- G A R PRECISION 1680 #
- BIG ROK BEAUTY 742

CED	BW	WW	YW	MILK	SC		
+11	+2.1	+63	+110	+26	+1.32		
CW	MARB	RE	FAT	\$W	\$F	\$G	\$B
+24	+1.18	+0.72	-0.31	+43.16	+55.01	+57.21	+98.84



6
sons sell

Reference Sire **CONNELY IRISH 0204**

Reg: 16761484 • Calved: 01/26/2010 • Tat: 0204

- CONNELY COWBOY
- CONNELY WRANGLER**
- KELLY OF CONANGA 577
- MYTTY IN FOCUS #
- BLACK CREST OF CONANGA 5640 #**
- BLACK CRESHA OF CONANGA 3314
- C A FUTURE DIRECTION 5321 #
- BECKAH OF CONANGA 747
- G A R GRID MAKER #
- CONNELY BANDO 133
- S A F FOCUS OF E R #
- MYTTY COUNTESS 906
- C R A BEXTOR 872 5205 608 #
- BLACK CRESA OF CONANGA 5332

CED	BW	WW	YW	MILK	SC		
+15	-.2	+55	+107	+23	+1.31		
CW	MARB	RE	FAT	\$W	\$F	\$G	\$B
+39	+0.61	+0.77	-0.38	+36.84	+55.15	+42.64	+99.90

Reference Sire **MYTTY WINDY 758 12X** **8 sons sell**

Reg: 16699012 • Calved: 01/06/2010 • Tat: 12X

- H A R B WINDY 702 JH #
- H A R B WINDY 758 JH**
- H A R B JUANADA ERICA 571 JH #
- MYTTY IN FOCUS #
- MYTTY COUNTESS JACKIE 90U**
- MYTTY COUNTESS JACKIE 909
- A A R REALLY WINDY 1205 #
- H A R B BLACK LADY 073 JH
- S A V FINAL ANSWER 0035 #
- H A R B JUANADA ERICA 391 JH
- S A F FOCUS OF E R #
- MYTTY COUNTESS 906
- TC STOCKMAN 365 #
- 4 M COUNTESS JACKIE C46 #

CED	BW	WW	YW	MILK	SC		
+14	-.7	+37	+78	+21	+1.78		
CW	MARB	RE	FAT	\$W	\$F	\$G	\$B
+15	+0.33	+0.51	+0.060	+24.93	+26.06	+23.63	+51.19

Reference Sire **KG ALLIANCE 0168** **4 sons sell**

Reg: 16779890 • Calved: 02/06/2010 • Tat: 0168

- SITZ ALLIANCE 6595 #
- SITZ ALLIANCE 7544 #**
- SITZ PRIDE 2561
- G A R RETAIL PRODUCT #
- KG JUDITH 8145**
- DJ JUDITH S214
- SITZ TRAVELER 8180 #
- SITZ BARBARAMERE JET 2698 #
- D H D TRAVELER 6807 #
- SITZ PRIDE 2188
- G A R PRECISION 1680 #
- G A R EXT 4927
- KAHN BROADBAND R A 94L #
- ER JUDITH K035

CED	BW	WW	YW	MILK	SC		
+7	+1.0	+58	+114	+35	+2.12		
CW	MARB	RE	FAT	\$W	\$F	\$G	\$B
+44	+0.40	+0.23	+0.053	+32.93	+63.34	+17.26	+80.01

Reference Sire **SILVEIRAS OUT WEST 7026** **5 sons sell**

Reg: 15630115 • Calved: 01/09/2007 • Tat: 7026

- BON VIEW NEW DESIGN 1407 #
- SILVEIRAS WAY OUT WEST 3527**
- SILVEIRAS ELBA 1515
- WAR ALLIANCE 9126 6006 #
- SILVEIRAS KIND JANIE 5017**
- KIND JANIE OF HOLIDAY 9055
- B/R NEW DESIGN 036 #
- BON VIEW PRIDE 664
- BON VIEW BANDO 598 #
- D A R ELBA 55
- SITZ ALLIANCE 6595 #
- WAR BANDO 6006 598 4053
- CALIFORNIA TRAVELER #
- FIVE STAR KIND JANIE 744

CED	BW	WW	YW	MILK	SC		
+18	-2.7	+50	+88	+28	+0.77		
CW	MARB	RE	FAT	\$W	\$F	\$G	\$B
+26	+0.88	+0.78	-0.19	+50.00	+32.36	+50.49	+92.60



BON VIEW NEW DESIGN 1407
PATERNAL GRANDSIRE OF SILVEIRAS OUT WEST 7026

Reference Sires



Reference Sire **21AR-PENDELTON 7013A**

Reg: 15872967 • Calved: 01/27/2007 • Tat: 7013A

S A V FINAL ANSWER 0035
HARB PENDLETON 765 JH
 H A R B BLACK LADY 375 JH #
 LEACHMAN RIGHT TIME
21AR BLACKCAP F89B
 BLACKCAP EMULATION 89B

SITZ TRAVELER 8180 #
 S A V EMULOUS 8145
 H A R B HIGH PLAINS 975 JH #
 H A R B BLACK LADY 073 JH #
 N BAR EMULATION EXT #
 LEACHMAN ERICA 0025
 EMULATION BANDO 36V
 SCOTCH POWER 70X

CED		BW		WW		YW		MILK		SC	
+9		+.5		+42		+75		+19		+.99	
CW	MARB	RE	FAT	\$W	\$F	\$G	\$B				
+34	+.32	+.03	+.074	+29.21	+19.94	+9.47	+60.03				



Reference Sire **VERMILION COWCUTTA X840 2 sons sell**

Reg: 16783726 • Calved: 09/04/2010 • Tat: X840

RITO 112 OF 2536 RITO 616 #
HARB COWCUTTA 776 JH
 H A R B JUANADA ERICA 280 JH
 VERMILION M097 DESIGN P251
VERMILION LADY 7815
 VERMILION LADY 4723

RITO 616 OF 4B20 6807 #
 G A R PRECISION 2536
 SITZ ALLIANCE 6595 #
 JUANADA ERICA 9024 H A R B
 VERMILION NEW DESIGN M097
 VERMILION LASS 7969
 EXAR MILESTONE 2107 #
 VERMILION LADY 2883

CED		BW		WW		YW		MILK		SC	
+9		-.4		+53		+95		+24		—	
CW	MARB	RE	FAT	\$W	\$F	\$G	\$B				
I+27	I+.39	I+.02	I+.026	+35.19	+39.96	+21.19	+64.73				

Reference Sire **TC ABERDEEN 759 3 sons sell**

Reg: 15840414 • Calved: 01/27/2007 • Tat: 759

B A R EXT TRAVELER 205 #
C R A BEXTOR 872 5205 608 #
 CRA LADY JAYE 608 498 S EASY
 BON VIEW NEW DESIGN 208 #
TC BLACKBIRD 4034 #
 TC BLACKBIRD 1013

N BAR EMULATION EXT #
 B A R QUEEN TRAVELER 3015 #
 G A R SLEEP EASY 1009 #
 H H F 917 LADY 975 498
 B/R NEW DESIGN 036 #
 BON VIEW ERICA 443 #
 S A F FAME #
 TC BLACKBIRD 9032

CED		BW		WW		YW		MILK		SC	
+10		+.8		+56		+102		+37		+.56	
CW	MARB	RE	FAT	\$W	\$F	\$G	\$B				
+22	+.47	+1.41	+.003	+50.20	+47.76	+42.92	+81.31				



Reference Sire **SYDGEN MANDATE 6079 2 sons sell**

Reg: 15337433 • Calved: 01/09/2006 • Tat: 6079

S S TRAVELER 6807 T510 #
S S OBJECTIVE T510 0T26 #
 S S MISS RITA R011 7R8
 S A F FOCUS J30
SYDGEN GINA 4235
 INNIWAY MS NEW DESIGN 201

D H D TRAVELER 6807 #
 S S MISS HI SPADE A114 #
 S S RITO RITO R76 R011
 S S MISS ULTRESS U56
 S A F FOCUS OF E R #
 S A F ROYAL QUEEN 5084
 BON VIEW NEW DESIGN 1407 #
 INNIWAY MS LUCY 068

CED		BW		WW		YW		MILK		SC	
+14		+.6		+67		+124		+33		+1.32	
CW	MARB	RE	FAT	\$W	\$F	\$G	\$B				
+41	+.96	-.12	+.040	+40.79	+72.73	+30.68	+91.85				

Reference Sire **KESSLERS FRONT MAN R001 1 son sells**

Reg: 15180461 • Calved: 01/01/2005 • Tat: R001

CONNEALY FOREFRONT #
CONNEALY FRONT PAGE 0228 #
 EBONY LIT OF CONANGA 840 #
 TC RANCHER 056 #
KESSLERS BELL 0024
 KESSLERS BELL 8055

CONNEALY FRONTLINE #
 EILEEN HEARTLAND CONANGA6443
 G D A R TRAVELER 044 #
 EBONY LIL OF CONANGA #
 LEACHMAN PROMPTER #
 T C JESTRESS 6004 #
 B/R NEW DESIGN 036 #
 KESSLERS RAIN BELL 101

CED		BW		WW		YW		MILK		SC	
+10		+0		+51		+85		+42		+.66	
CW	MARB	RE	FAT	\$W	\$F	\$G	\$B				
+17	+.04	+.90	+.005	+43.81	+28.05	+19.45	+49.69				



LOT 1 - 3092



LOT 3 - 3065

1 MDG BEXTOR 3092 BULL
 Reg: 17646515 • Calved: 2/16/2013 • Tattoo: 3092

SIRE: MYTTY BEXTOR 86W

E7 GURU 286
 MASTER MONSTER 416
 M A BROOK CLEO 16
DAM: MDG ERICA 6054
 STEVENSON LAWMAN 199E
 MDG ERICA 8084
 M D G ERICA 2051 #

BW:	80
205	
WT:	736
365	
WT:	1298

CED	BW	WW	YW	MILK	MARB	RE	\$B
+7	+0.8	+59	+97	+29	+0.42	+0.36	+64.14

Dam's Production Record: WR 6-104, YR 4-110.

3 MDG IRISH 3065 BULL
 Reg: 17646507 • Calved: 2/12/2013 • Tattoo: 3065

SIRE: CONNEALY IRISH 0204

LEACHMAN RIGHT TIME #
 VERMILION RIGHT TIME H918 #
 VERMILION ROSELLA 6081
DAM: MDG SHOSHONE 5192
 F F WESTERN DIVIDEND Y13 #
 M D G SHOSHONE 0071
 MDG SHOSHONE 6121 #

BW:	82
205	
WT:	738
365	
WT:	1231

CED	BW	WW	YW	MILK	MARB	RE	\$B
+9	+1.7	+60	+104	+19	+0.37	+0.35	+83.74

Dam's Production Record: WR 7-99, YR 6-102.



LOT 2 - 3013



LOT 4 - G302

2 MDG IRISH 3013 BULL
 Reg: 17646489 • Calved: 2/1/2013 • Tattoo: 3013

SIRE: CONNEALY IRISH 0204

MRG EXT 524G
 BASIN EXT 661L #
 MRG ERICA 609G #
DAM: MDG ERICA 7094 #
 VERMILION RIGHT TIME H918 #
 MDG ERICA 2099
 M D G ERICA 7018

BW:	84
205	
WT:	738
365	
WT:	1208

CED	BW	WW	YW	MILK	MARB	RE	\$B
+8	+1.7	+53	+96	+26	+0.35	+0.67	+80.65

Dam's Production Record: WR 5-109, YR 4-108
 Pathfinder cow.

4 TLG INCENTIVE G302 BULL
 Reg: 17649634 • Calved: 2/3/2013 • Tattoo: G302

SIRE: CIRCLE A INCENTIVE

TC DIVIDEND 963
 F F WESTERN DIVIDEND Y13
 BT ELBA 113C
DAM: TLG LASSIE G709
 BASIN EMULATION 178C
 TLG LASSIE G610
 LANDMARK LASSIE 603

BW:	82
205	
WT:	785
365	
WT:	1358

CED	BW	WW	YW	MILK	MARB	RE	\$B
+7	+2.2	+60	+104	+23	+0.46	+0.23	+87.02

Dam's Production Record: WR 5-106, YR 5-105.



LOT 5 - 3035



LOT 7 - 3045

5 MDG BEXTOR 3035 *BULL*
 Reg: 17646496 • Calved: 2/5/2013 • Tattoo: 3035

SIRE: MYTTY BEXTOR 86W

VERMILION DATELINE 7078 #	BW: 82
VERMILION JP DATELINE L845	205
DAM: MDG ELINE DRICA 7081	WT: 719
VERMILION 155 LASS J P 2022 #	
BASIN EMULATION 178C #	365
MDG ELINE ERICA 9051	WT: 1204
MDG ELINE ERICA 7169	

CED	BW	WW	YW	MILK	MARB	RE	\$B
+7	+1.0	+57	+92	+23	+0.40	+0.12	+54.70

Dam's Production Record: WR 5-99, YR 4-102.

7 MDG WINDY 3045 *BULL*
 Reg: 17646500 • Calved: 2/7/2013 • Tattoo: 3045

SIRE: MYTTY WINDY 758 12X

S S OBJECTIVE T510 0T26 #	BW: 76
SYDGEN MANDATE 6079	205
DAM: 1026 MDG MS MANDATE	WT: 735
SYDGEN GINA 4235	
KG ONWARD 5246	365
MDG MS PIONEER 9111	WT: 1223
VERMILION MS PIONEER 2318	

CED	BW	WW	YW	MILK	MARB	RE	\$B
+10	+1.0	+51	+94	+24	+0.22	+0.30	+43.49

Dam's Production Record: WR 104, YR 105. First calf heifer.



LOT 6 - 3039



LOT 8 - G306

6 MDG WEST 3039 *BULL*
 Reg: 17646498 • Calved: 2/6/2013 • Tattoo: 3039

SIRE: SILVEIRAS OUT WEST 7026

GARDENS EXPEDITION #	BW: 82
BASIN EXPEDITION 04P6	205
DAM: MDG EXPEDITION LASS 7202	WT: 781
BASIN EILEENMERE 261J	
BASIN EXT 661L #	365
MDG LASS 4180 #	WT: 1261
M D G LASS 0030	

CED	BW	WW	YW	MILK	MARB	RE	\$B
+11	+0.3	+52	+91	+31	+0.62	+0.57	+87.22

Dam's Production Record: WR 4-108, YR 4-104. Full brother to 2013 Sale Lot 3, 2ND high selling bull bought by F Outfit, Shelby, MT.

8 TLG INCENTIVE G306 *BULL*
 Reg: 17649412 • Calved: 2/8/2013 • Tattoo: G306

SIRE: CIRCLE A INCENTIVE

H A IMAGE MAKER 0415 #	BW: 84
RR 0415 IMAGE 5922	205
DAM: TLG HEIRESS G926	WT: 776
M T CLOVA PRIDE 8346 #	
VERMILION JP DATELINE L845	365
TLG HEIRESS G515	WT: 1275
TLG HEIRESS G604 #	

CED	BW	WW	YW	MILK	MARB	RE	\$B
+9	+1.5	+60	+96	+24	+0.62	+0.49	+74.45

Dam's Production Record: WR 3-101, YR 111.

9 MDG BEXTOR 3001 BULL
 Reg: 17646484 • Calved: 1/16/2013 • Tattoo: 3001

SIRE: MYTTY BEXTOR 86W

CONNEALY FRONTLINE #	BW: 60
LEACHMAN CASCADE #	205
DAM: MDG BEAUTY 3055	WT: 711
LEACHMAN BLACKCAP 3053	
BASIN EMULATION 178C #	365
M D G BEAUTY 7066	WT: 1146
MDG BEAUTY 5035 #	

CED	BW	WW	YW	MILK	MARB	RE	\$B
+9	+0.5	+51	+85	+30	+0.46	+0.01	+40.58

Twin to Lot 10.

Dam's Production Record: WR 11-101, YR 9-101.



LOT 13 - 316G

10 MDG BEXTOR 3002 BULL
 Reg: 17646485 • Calved: 1/16/2013 • Tattoo: 3002

SIRE: MYTTY BEXTOR 86W

CONNEALY FRONTLINE #	BW: 56
LEACHMAN CASCADE #	205
DAM: MDG BEAUTY 3055	WT: 698
LEACHMAN BLACKCAP 3053	
BASIN EMULATION 178C #	365
M D G BEAUTY 7066	WT: 1180
MDG BEAUTY 5035 #	

CED	BW	WW	YW	MILK	MARB	RE	\$B
+9	+0.5	+51	+85	+30	+0.44	+0.18	+47.03

Twin to Lot 9.

Dam's Production Record: WR 11-101, YR 9-101.

13 MRG BEXTOR 316G BULL
 Reg: 17649733 • Calved: 2/20/2013 • Tattoo: 316G

SIRE: MYTTY BEXTOR 86W

S A F FOCUS OF E R #	BW: 82
MYTTY IN FOCUS #	205
DAM: MRG QUEEN FOCUS 812G	WT: 722
MYTTY COUNTESS 906	
BASIN EMULATION 178C #	365
MRG QUEEN MOTHER 802G	WT: 1264
MRG QUEEN MOTHER 611G #	

CED	BW	WW	YW	MILK	MARB	RE	\$B
+7	+1.5	+56	+89	+26	+0.55	+0.31	+64.60

Dam's Production Record: WR 4-98, YR 2-108.

11 MDG BEXTOR 3079 BULL
 Reg: 17646511 • Calved: 2/14/2013 • Tattoo: 3079

SIRE: MYTTY BEXTOR 86W

GREENBRAE CHAIRMAN #	BW: 76
PREMIER CHAIRMAN 6011A #	205
DAM: MDG ERICA 5001	WT: 639
J K QUEEN 141	
LEACHMAN CASCADE #	365
MDG ERICA 3003	WT: 1095
M D G ERICA 1082	

CED	BW	WW	YW	MILK	MARB	RE	\$B
+10	+0.1	+48	+82	+24	+0.60	+0.25	+45.41

Dam's Production Record: WR 7-98, YR 3-100.

14 MDG IRISH 3058 BULL
 Reg: 17646504 • Calved: 2/10/2013 • Tattoo: 3058

SIRE: CONNEALY IRISH 0204

GREENBRAE CHAIRMAN #	BW: 76
PREMIER CHAIRMAN 6011A #	205
DAM: MDG LASS 3129	WT: 707
J K QUEEN 141	
EMULATION 479B OF JRS	365
MDG LASS 5114	WT: 1200
VERMILION LASS 0345	

CED	BW	WW	YW	MILK	MARB	RE	\$B
+9	+1.1	+48	+87	+24	+0.48	+0.57	+82.93

Dam's Production Record: WR 9-99, YR 8-101.

12 MRG BEXTOR 315G BULL
 Reg: 17649734 • Calved: 2/20/2013 • Tattoo: 315G

SIRE: MYTTY BEXTOR 86W

SILVEIRAS WAY OUT WEST 3527	BW: 68
SILVEIRAS OUT WEST 7026	205
DAM: 103G MRG QUEEN WEST	WT: 734
SILVEIRAS KIND JANIE 5017	
MYTTY IN FOCUS #	365
MRG QUEEN MOTHER 915G	WT: 1174
MRG QUEEN MOTHER 301G	

CED	BW	WW	YW	MILK	MARB	RE	\$B
+13	-0.8	+63	+104	+29	+0.38	+0.19	+33.67

Dam's Production Record: WR 104, YR 105.

First calf heifer.

15 MDG IRISH 3067 BULL
 Reg: 17646508 • Calved: 2/12/2013 • Tattoo: 3067

SIRE: CONNEALY IRISH 0204

ROCKN D AMBUSH 1531 #	BW: 78
J R ROCKN AMBUSH 178H	205
DAM: MDG BLACKBIRD 2127	WT: 690
JOLLY R LADY VICK 084A	
MDG 7068 OF CHAIRMAN	365
MDG HENRIETTA 9171 #	WT: 1109
M D G HENRIETTA 7083 #	

CED	BW	WW	YW	MILK	MARB	RE	\$B
+9	+1.3	+44	+77	+23	+0.46	+0.50	+68.12

Dam's Production Record: WR 10-102, YR 10-100.

16 MDG IRISH 3124

BULL

Reg: 17646526 • Calved: 2/24/2013 • Tattoo: 3134

SIRE: CONNEALY IRISH 0204

TC DIVIDEND 963 #	BW: 80
F F WESTERN DIVIDEND Y13 #	205
BT ELBA 113C	WT: 695
DAM: MDG LASS 3030 #	365
PREMIER CHAIRMAN 6011A #	WT: 1239
M D G LASS 1065	
VERMILION LASS 0345	

CED	BW	WW	YW	MILK	MARB	RE	\$B
+10	+1.1	+49	+88	+21	+0.46	+0.40	+87.06

Dam's Production Record: WR 9-102, YR 8-13.

17 MRG IRISH 304G

BULL

Reg: 17649627 • Calved: 2/2/2013 • Tattoo: 304G

SIRE: CONNEALY IRISH 0204

S A V FINAL ANSWER 0035 #	BW: 86
HARB PENDLETON 765 JH #	205
H A R B BLACK LADY 375 JH #	WT: 644
DAM: MRG PRIDE P 908G	365
VERMILION RIGHT TIME H918 #	WT: 1057
MRG PRIDE 309G	
MRG PRIDE 506G	

CED	BW	WW	YW	MILK	MARB	RE	\$B
+8	+2.7	+49	+91	+21	+0.26	+0.28	+50.90



LOT 18 - 3010

18 MDG WINDY 3010

BULL

Reg: 17646487 • Calved: 2/1/2013 • Tattoo: 3010

SIRE: MYTTY WINDY 758 12X

CONNEALY LEAD ON #	BW: 82
WOODLAWN CHARGE ON 14 #	205
D D PRIDE 211 5175	WT: 711
DAM: MDG CHARGE ON LASS 7038 #	365
F F WESTERN DIVIDEND Y13 #	WT: 1218
MDG LASS 3030 #	
M D G LASS 1065	

CED	BW	WW	YW	MILK	MARB	RE	\$B
+7	+1.1	+46	+83	+24	+0.43	+0.39	+73.30

Dam's Production Record: WR 5-106, YR 4-103.

Pathfinder cow.

19 MDG WINDY 3014

BULL

Reg: 17646490 • Calved: 2/1/2013 • Tattoo: 3014

SIRE: MYTTY WINDY 758 12X

ROCKN D AMBUSH 1531 #	BW: 74
J R ROCKN AMBUSH 178H	205
JOLLY R LADY VICK 084A	WT: 748
DAM: MDG EMPRESS 2068 #	365
F F KANSAS 1	WT: 1164
MDG EMPRESS 9141	
M D G EMPRESS 7076	

CED	BW	WW	YW	MILK	MARB	RE	\$B
+5	+2.7	+40	+75	+22	+0.68	+0.39	+69.49

Dam's Production Record: WR 11-107, NR 9-106

Pathfinder cow who has had several top selling bulls in past sales.



LOT 20 - 3019

20 MDG WINDY 3019

BULL

Reg: 17646492 • Calved: 2/2/2013 • Tattoo: 3019

SIRE: MYTTY WINDY 758 12X

S S OBJECTIVE T510 0T26 #	BW: 76
SYDGEN MANDATE 6079	205
SYDGEN GINA 4235	WT: 734
DAM: 1021 MDG MISS MANDATE	365
VERMILION RIGHT TIME H918 #	WT: 1182
MDG ELONEMAR 2028 #	
M D G ELONEMAR 7120 #	

CED	BW	WW	YW	MILK	MARB	RE	\$B
+10	+1.2	+51	+94	+24	+0.20	+0.28	+38.85

Dam's Production Record: WR 104, YR 102.

First calf heifer.

21 MDG WINDY 3053

BULL

Reg: 17646503 • Calved: 2/8/2013 • Tattoo: 3053

SIRE: MYTTY WINDY 758 12X

CONNEALY ONWARD #	BW: 84
KG ONWARD 5246	205
KG BANDOLIERMERE 0318	WT: 718
DAM: MDG PRIDE 0081	365
BASIN EXT 661L #	WT: 1228
MDG PRIDE 4085	
MDG PRIDE 2138 #	

CED	BW	WW	YW	MILK	MARB	RE	\$B
+8	+1.6	+45	+86	+22	+0.19	+0.42	+57.59

Dam's Production Record: WR 2-104, YR 2-107.

22 MDG WINDY 3091

BULL

Reg: 17646514 • Calved: 2/16/2013 • Tattoo: 3091

SIRE: MYTTY WINDY 758 12X

C R A BEXTOR 872 5205 608 #
 MYTTY BEXTOR 86W
 MYTTY PRIDE 32S #
 DAM: 1008 MDG CHLOE
 21AR-PENDELTON 7013A
 MDG CHLOE 9004
 MDG CHLOE 4062

BW:	78
205	
WT:	724
365	
WT:	1090

CED	BW	WW	YW	MILK	MARB	RE	\$B
+10	+0.9	+47	+86	+25	+0.16	+0.18	+24.14

Dam's Production Record: WR 103.

First calf heifer.



LOT 26 - 3162

23 MDG WINDY 3099

BULL

Reg: 17646516 • Calved: 2/17/2013 • Tattoo: 3099

SIRE: MYTTY WINDY 758 12X

S A V FINAL ANSWER 0035 #
 HARB PENDLETON 765 J H #
 H A R B BLACK LADY 375 J H #
 DAM: MDG ERICA 0042
 E7 SUMMIT 42J8
 MDG ERICA 8095 #
 MDG ERICA 3052

BW:	74
205	
WT:	673
365	
WT:	1204

CED	BW	WW	YW	MILK	MARB	RE	\$B
+10	+0.9	+43	+80	+24	+0.40	+0.28	+63.79

Dam's Production Record: WR 2-103, YR 2-103.

26 MDG ALLIANCE 3162

BULL

Reg: 17646535 • Calved: 3/4/2013 • Tattoo: 3162

SIRE: KG ALLIANCE 0168

S A V FINAL ANSWER 0035 #
 HARB PENDLETON 765 J H #
 H A R B BLACK LADY 375 J H #
 DAM: MDG SENTRESS 9023
 VERMILION RIGHT TIME H918 #
 MDG SENTRESS 3152
 GOLLAHER SENTRESS 6004 #

BW:	80
205	
WT:	711
365	
WT:	1109

CED	BW	WW	YW	MILK	MARB	RE	\$B
+7	+1.5	+62	+111	+29	+0.23	+0.18	+61.75

Dam's Production Record: WR 3-103, YR 3-101.

24 MDG WINDY 3143

BULL

Reg: 17646530 • Calved: 2/25/2013 • Tattoo: 3143

SIRE: MYTTY WINDY 758 12X

HARB PENDLETON 765 J H #
 21AR-PENDELTON 7013A
 21AR BLACKCAP F89B
 DAM: MDG ERICA 0114
 VERMILION RIGHT TIME H918 #
 MDG ERICA 3181 #
 MDG ERICA 8014 #

BW:	74
205	
WT:	728
365	
WT:	1216

CED	BW	WW	YW	MILK	MARB	RE	\$B
+9	+0.5	+49	+86	+20	+0.25	+0.27	+47.07

Dam's Production Record: WR 2-102, YR 1-106.

27 MDG ALLIANCE 3163

BULL

Reg: 17646536 • Calved: 3/4/2013 • Tattoo: 3163

SIRE: KG ALLIANCE 0168

SILVEIRAS WAY OUT WEST 3527
 SILVEIRAS OUT WEST 7026
 SILVEIRAS KIND JANIE 5017
 DAM: MDG WEST PRIDE 0077
 BASIN EXT 661L #
 MDG PRIDE 4102 #
 M D G PRIDE 4031

BW:	80
205	
WT:	764
365	
WT:	1193

CED	BW	WW	YW	MILK	MARB	RE	\$B
+8	+1.0	+54	+98	+34	+0.37	+0.22	+68.57

Dam's Production Record: WR 2-111, YR 2-104.

25 MDG ALLIANCE 3152

BULL

Reg: 17646532 • Calved: 2/27/2013 • Tattoo: 3152

SIRE: KG ALLIANCE 0168

VERMILION DATELINE 7078 #
 VERMILION JP DATELINE L845
 VERMILION 155 LASS J P 2022 #
 DAM: MDG MS EMULATION 5126 #
 LEACHMAN CASCADE #
 MDG MS EMULATION 2096 #
 M D G EMULATION 7080

BW:	80
205	
WT:	739
365	
WT:	1169

CED	BW	WW	YW	MILK	MARB	RE	\$B
+5	+1.9	+53	+101	+29	+0.19	+0.19	+62.54

Dam's Production Record: WR 7-106, YR 4-109.

28 MDG ALLIANCE 3196

BULL

Reg: 17646544 • Calved: 3/14/2013 • Tattoo: 3196

SIRE: KG ALLIANCE 0168

CONNEALY ONWARD #
 KG ONWARD 5246
 KG BANDOLIERMERE 0318
 DAM: MDG CHLOE 8051
 BASIN EXT 661L #
 MDG CHLOE 6068
 MDG CHLOE 4194

BW:	78
205	
WT:	719
365	
WT:	1156

CED	BW	WW	YW	MILK	MARB	RE	\$B
+10	-0.5	+54	+99	+30	+0.29	+0.15	+63.89

Dam's Production Record: WR 4-105, YR 4-102.



LOT 29 - 3011

31 MDG X FACTOR 3021 BULL
 Reg: 17646493 • Calved: 2/4/2013 • Tattoo: 3021

SIRE: BOBCAT X FACTOR X22

CONNEALY DANNY BOY #
 VERMILION DANNY BOY R526
 VERMILION PRIZE 0011
DAM: MDG ELONEMAR 7175
 PREMIER CHAIRMAN 6011A #
 MDG ELONEMAR 4007
 MDG ELONEMAR 2028 #

BW:	76
205	
WT:	701
365	
WT:	1133

CED	BW	WW	YW	MILK	MARB	RE	\$B
+10	-0.1	+52	+84	+18	+0.19	+0.48	+66.10

Dam's Production Record: WR 5-102, YR 4-98.

29 MDG X FACTOR 3011 BULL
 Reg: 17646488 • Calved: 2/1/2013 • Tattoo: 3011

SIRE: BOBCAT X FACTOR X22

CONNEALY ONWARD #
 KG ONWARD 5246
 KG BANDOLIERMERE 0318
DAM: MDG MISS WIX 9144
 VERMILION RIGHT TIME H918 #
 MDG MISS WIX 2171
 MDG MISS WIX 9123

BW:	82
205	
WT:	682
365	
WT:	1146

CED	BW	WW	YW	MILK	MARB	RE	\$B
+7	+1.3	+53	+88	+14	+0.11	+0.54	+55.85

Dam's Production Record: WR 4-98, YR 1-99.

32 MDG X FACTOR 3050 BULL
 Reg: 17646501 • Calved: 2/8/2013 • Tattoo: 3050

SIRE: BOBCAT X FACTOR X22

SUMMITCREST HI FLYER 3B18 #
 RCC PREFERENCE #
 W A F J BAND ELBADINA 97
DAM: MDG PRIME LASS 9042
 LEACHMAN HIGH PRIME 3722
 MDG PRIME LASS 6218
 MDG LASS 7193 #

BW:	74
205	
WT:	694
365	
WT:	1068

CED	BW	WW	YW	MILK	MARB	RE	\$B
+8	+0.7	+51	+92	+17	+0.44	+0.51	+72.59

Dam's Production Record: WR 3-99, YR 2-99.



LOT 30 - 3017

33 MDG X FACTOR 3073 BULL
 Reg: 17646509 • Calved: 2/13/2013 • Tattoo: 3073

SIRE: BOBCAT X FACTOR X22

HARB PENDLETON 765 J H #
 21AR-PENDELTON 7013A
 21AR BLACKCAP F89B
DAM: 1109 MDG PEND PRIDE
 E7 SUMMIT 42J8
 MDG PRIDE 7027
 MDG PRIDE 5162

BW:	78
205	
WT:	739
365	
WT:	1193

CED	BW	WW	YW	MILK	MARB	RE	\$B
+8	+1.0	+51	+85	+19	+0.20	+0.40	+57.84

Dam's Production Record: WR 105, YR 103.

First calf heifer.

30 MDG X FACTOR 3017 BULL
 Reg: 17646491 • Calved: 2/1/2013 • Tattoo: 3017

SIRE: BOBCAT X FACTOR X22

SUMMITCREST HIGH PRIME 0H29 #
 LEACHMAN HIGH PRIME 3722
 LEACHMAN BLACKCAP 6260
DAM: MDG ERICA 7109
 VERMILION RIGHT TIME H918 #
 M D G ERICA 1082
 MDG ERICA 5063

BW:	86
205	
WT:	699
365	
WT:	1174

CED	BW	WW	YW	MILK	MARB	RE	\$B
+7	+1.3	+52	+86	+13	+0.39	+0.60	+77.02

34 MDG X FACTOR 3102 BULL
 Reg: 17646519 • Calved: 2/18/2013 • Tattoo: 3102

SIRE: BOBCAT X FACTOR X22

VERMILION DATELINE 7078 #
 VERMILION JP DATELINE L845
 VERMILION 155 LASS J P 2022 #
DAM: MDG BEAUTY 6113
 BASIN EMULATION 178C #
 M D G BEAUTY 7066
 MDG BEAUTY 5035 #

BW:	80
205	
WT:	652
365	
WT:	1121

CED	BW	WW	YW	MILK	MARB	RE	\$B
+9	+0.3	+45	+79	+14	+0.18	+0.49	+65.56

35 MDG X FACTOR 3137

BULL

Reg: 17646528 • Calved: 2/24/2013 • Tattoo: 3137

SIRE: BOBCAT X FACTOR X22

HARB PENDLETON 765 J H #								BW : 70
21AR-PENDELTON 7013A								205
21AR BLACKCAP F89B								WT: 676
DAM: MDG ERICA 0124								365
PREMIER CHAIRMAN 6011A #								WT: 1143
MDG ERICA 5075								
MDG ERICA 3181 #								
CED	BW	WW	YW	MILK	MARB	RE	\$B	
+10	-0.1	+49	+83	+17	+0.08	+0.36	+50.01	



LOT 39 - G316

36 MDG X FACTOR 3140

BULL

Reg: 17646528 • Calved: 2/24/2013 • Tattoo: 3140

SIRE: BOBCAT X FACTOR X22

CONNEALY FRONTLINE #								BW : 72
LEACHMAN CASCADE #								205
LEACHMAN BLACKCAP 3053								WT: 742
DAM: MDG ELONEMAR 6006 #								365
VERMILION RIGHT TIME H918 #								WT: 1155
MDG ELONEMAR 2028 #								
M D G ELONEMAR 7120 #								
CED	BW	WW	YW	MILK	MARB	RE	\$B	
+11	-0.2	+53	+89	+21	+0.20	+0.33	+64.56	

Dam's Production Record: WR 6-107, YR 4-104.
Pathfinder cow.

39 TLG INCENTIVE G316

BULL

Reg: 17649416 • Calved: 2/14/2013 • Tattoo: G316

SIRE: CIRCLE A INCENTIVE

S A F FOCUS OF E R #								BW : 88
MYTTY IN FOCUS #								205
MYTTY COUNTESS 906								WT: 690
DAM: TLG HEIRESS FOCUS G804								365
VERMILION RIGHT TIME H918 #								WT: 1248
TLG HEIRESS G203								
TLG HEIRESS G608								
CED	BW	WW	YW	MILK	MARB	RE	\$B	
+7	+2.8	+57	+100	+21	+0.76	+0.24	+84.03	

Dam's Production Record: WR 4-99, YR 2-105.

37 MDG X FACTOR 3161

BULL

Reg: 17646534 • Calved: 3/3/2013 • Tattoo: 3161

SIRE: BOBCAT X FACTOR X22

S A V FINAL ANSWER 0035 #								BW : 84
HARB PENDLETON 765 J H #								205
H A R B BLACK LADY 375 J H #								WT: 704
DAM: MDG EMULATION 0011								365
LEACHMAN CASCADE #								WT: 1206
MDG EMULATION 3185 #								
M D G LOVANA 4026								
CED	BW	WW	YW	MILK	MARB	RE	\$B	
+7	+1.8	+49	+86	+24	+0.15	+0.47	+60.23	

Dam's Production Record: WR 2-107, YR 1-105.

40 MDG INCENTIVE 3109

BULL

Reg: 17646521 • Calved: 2/19/2013 • Tattoo: 3109

SIRE: CIRCLE A INCENTIVE

VERMILION JUST IN TIME								BW : 82
VERMILION JUST IN TIME T264								205
VERMILION PRIDE 1446 #								WT: 685
DAM: MDG CHLOE 9062								365
STEVENSON BRUNO 561G #								WT: 1162
M D G CHLOE 0004								
MDG CHLOE 6162								
CED	BW	WW	YW	MILK	MARB	RE	\$B	
+7	+2.6	+50	+91	+22	+0.66	+0.44	+65.04	

38 MDG INCENTIVE 3082

BULL

Reg: 17646512 • Calved: 2/15/2013 • Tattoo: 3082

SIRE: CIRCLE A INCENTIVE

G D A R TRAVELER 561 #								BW : 84
E7 SUMMIT 42J8								205
E7 MARLAMERE 2J8 #								WT: 729
DAM: MDG PRIDE 7027								365
LEACHMAN CASCADE #								WT: 1142
MDG PRIDE 5162								
MDG PRIDE 2057								
CED	BW	WW	YW	MILK	MARB	RE	\$B	
+7	+2.7	+53	+91	+24	+0.77	+0.32	+71.00	

Dam's Production Record: WR 5-103, YR 5-103.

41 MDG INCENTIVE 3129

BULL

Reg: 17646525 • Calved: 2/22/2013 • Tattoo: 3129

SIRE: CIRCLE A INCENTIVE

BROOKS EXT 792 #								BW : 80
BASIN EXT 661L #								205
BASIN CAMILLA 472F #								WT: 735
DAM: MDG WIX 6090 #								365
VERMILION RIGHT TIME H918 #								WT: 1071
MDG MISS WIX 4008								
M D G MISS WIX 7065 #								
CED	BW	WW	YW	MILK	MARB	RE	\$B	
+9	+1.1	+53	+81	+30	+0.57	+0.42	+59.93	

Dam's Production Record: WR 6-106, YR 5-103.
Pathfinder cow.

42 MDG IRON 3038 *BULL*

Reg: 17646497 • Calved: 2/6/2013 • Tattoo: 3038

SIRE: JF IRON SIGHT Y46

CONNEALY ONWARD #	BW: 74
KG ONWARD 5246	205
DAM: MDG BEAUTY 9077	WT: 681
KG BANDOLIERMERE 0318	365
LEACHMAN CASCADE #	WT: 1081
MDG BEAUTY 3055	
M D G BEAUTY 7066	

CED	BW	WW	YW	MILK	MARB	RE	\$B
+10	-0.1	+51	+90	+21	+0.35	+0.16	+55.80

Dam's Production Record: WR 3-103, YR 2-105.

43 MDG IRON 3040 *BULL*

Reg: 17646499 • Calved: 2/7/2013 • Tattoo: 3040

SIRE: JF IRON SIGHT Y46

HARB PENDLETON 765 J H #	BW: 78
21AR-PENDELTON 7013A	205
DAM: MDG BEAUTY 9017	WT: 685
21AR BLACKCAP F89B	365
J R ROCKN AMBUSH 178H	WT: 1143
M D G BEAUTY 0113	
M D G BEAUTY 4056	

CED	BW	WW	YW	MILK	MARB	RE	\$B
+7	+0.6	+49	+80	+20	+0.18	+0.14	+45.18

Dam's Production Record: WR 2-99, YR 1-99.

44 MDG IRON 3051 *BULL*

Reg: 17646502 • Calved: 2/8/2013 • Tattoo: 3051

SIRE: JF IRON SIGHT Y46

VERMILION DATELINE 7078 #	BW: 78
VERMILION JP DATELINE L845	205
DAM: MDG LASS 8126	WT: 662
VERMILION 155 LASS J P 2022 #	365
BASIN EMULATION 178C #	WT: 1121
MDG LASS 9060	
M D G LASS 4024	

CED	BW	WW	YW	MILK	MARB	RE	\$B
+9	+0.0	+52	+86	+14	+0.30	+0.11	+50.71

Dam's Production Record: WR 4-98, YR 2-98.

45 MDG IRON 3062 *BULL*

Reg: 17646505 • Calved: 2/11/2013 • Tattoo: 3062

SIRE: JF IRON SIGHT Y46

BROOKS EXT 792 #	BW: 80
BASIN EXT 661L #	205
DAM: MDG BLACKBIRD 6032	WT: 691
BASIN CAMILLA 472F #	365
LEACHMAN CASCADE #	WT: 1078
MDG BLACKBIRD 4059	
MDG BLACKBIRD 2066	

CED	BW	WW	YW	MILK	MARB	RE	\$B
+10	-0.6	+49	+85	+23	+0.27	+0.26	+52.01

Dam's Production Record: WR 6-98, YR 3-101.

46 MDG IRON 3074 *BULL*

Reg: 17646510 • Calved: 2/14/2013 • Tattoo: 3074

SIRE: JF IRON SIGHT Y46

VERMILION JUST IN TIME	BW: 76
VERMILION JUST IN TIME T264	205
DAM: MDG LASS 9172	WT: 691
VERMILION PRIDE 1446 #	365
BASIN EXT 661L #	WT: 1163
MDG LASS 5012	
MDG LASS 3129	

CED	BW	WW	YW	MILK	MARB	RE	\$B
+8	+0.2	+51	+89	+24	+0.57	+0.16	+72.86

Dam's Production Record: WR 3-103, YR 2-104.

47 MDG IRON 3118 *BULL*

Reg: 17646523 • Calved: 2/19/2013 • Tattoo: 3118

SIRE: JF IRON SIGHT Y46

CONNEALY FRONTLINE #	BW: 72
LEACHMAN CASCADE #	205
DAM: MDG SHOSHONE 6066	WT: 776
LEACHMAN BLACKCAP 3053	365
F F WESTERN DIVIDEND Y13 #	WT: 1189
M D G SHOSHONE 0071	
MDG SHOSHONE 6121 #	

CED	BW	WW	YW	MILK	MARB	RE	\$B
+9	+0.5	+49	+85	+21	+0.28	+0.09	+61.67

Dam's Production Record: WR 4-99, YR 2-101.

48 MDG IRON 3150 *BULL*

Reg: 17646531 • Calved: 2/27/2013 • Tattoo: 3150

SIRE: JF IRON SIGHT Y46

CONNEALY FRONTLINE #	BW: 84
LEACHMAN CASCADE #	205
DAM: MDG BLACKBIRD 4059	WT: 690
LEACHMAN BLACKCAP 3053	365
PREMIER CHAIRMAN 6011A #	WT: 1132
MDG BLACKBIRD 2066	
M D G HENRIETTA 7083 #	

CED	BW	WW	YW	MILK	MARB	RE	\$B
+8	+0.7	+48	+81	+19	+0.46	+0.30	+65.50

Dam's Production Record: WR 8-98, YR 3-100.

49 TLG IRON G328 *BULL*

Reg: 17650556 • Calved: 3/2/2013 • Tattoo: G328

SIRE: JF IRON SIGHT Y46

BROOKS EXT 792 #	BW: 84
BASIN EXT 661L #	205
DAM: TLG CLOVA PRIDE G607	WT: 765
BASIN CAMILLA 472F #	365
BASIN EMULATION 178C #	WT: 1240
TLG SENTRY G607	
M D G PINE SENTRY 7062	

CED	BW	WW	YW	MILK	MARB	RE	\$B
+8	+0.2	+55	+89	+25	+0.25	+0.21	+59.94

Dam's Production Record: WR 6-102, YR 3-105.

50 MDG IRON 3185 BULL

Reg: 17646541 • Calved: 3/11/2013 • Tattoo: 3185

SIRE: JF IRON SIGHT Y46

CONNEALY ONWARD #	BW: 70
KG ONWARD 5246	205
DAM: MDG BLUEBLOOD 9211	WT: 701
KG BANDOLIERMERE 0318	365
BASIN EXT 661L #	WT: 1075
MDG BLUEBLOOD 6022 #	
MDG BLUEBLOOD 4002 #	

CED	BW	WW	YW	MILK	MARB	RE	\$B
+11	-0.7	+54	+92	+22	+0.25	+0.18	+41.25

Dam's Production Record: WR 3-100, YR 1-108.

51 MDG IRON 3193 BULL

Reg: 17646543 • Calved: 3/14/2013 • Tattoo: 3193

SIRE: JF IRON SIGHT Y46

CONNEALY FRONTLINE #	BW: 84
LEACHMAN CASCADE #	205
DAM: MDG BLUEBLOOD 4208 #	WT: 739
LEACHMAN BLACKCAP 3053	365
VERMILION RIGHT TIME H918 #	WT: 1198
M D G BLUEBLOOD 1184 #	
MDG BLUEBLOOD 9138 #	

CED	BW	WW	YW	MILK	MARB	RE	\$B
+6	+1.8	+56	+96	+21	+0.22	+0.08	+61.81

Dam's Production Record: WR 8-106 YR 7-106.
Pathfinder cow.

52 MDG IRON 3197 BULL

Reg: 17646545 • Calved: 3/15/2013 • Tattoo: 3197

SIRE: JF IRON SIGHT Y46

C R A BEXTOR 872 5205 608 #	BW: 82
MYTTY BEXTOR 86W	205
DAM: 1046 MDG MISS BEXTOR	WT: 774
MYTTY PRIDE 32S #	365
VERMILION DANNY BOY R526	WT: 1193
MDG MISS WIX 7168 #	
MDG MISS WIX 4140	

CED	BW	WW	YW	MILK	MARB	RE	\$B
+5	+1.8	+65	+106	+25	+0.19	+0.12	+46.80

Dam's Production Record: WR 110, YR 103.
Fist calf heifer.

53 MDG IRON 3202 BULL

Reg: 17646546 • Calved: 3/16/2013 • Tattoo: 3202

SIRE: JF IRON SIGHT Y46

SUMMITCREST HI FLYER 3B18 #	BW: 68
RCC PREFERENCE #	205
DAM: MDG WIX 0076	WT: 743
W A FJ BAND ELBADINA 97	365
BASIN EXT 661L #	WT: 1135
MDG WIX 6090	
MDG MISS WIX 4008	

CED	BW	WW	YW	MILK	MARB	RE	\$B
+10	-0.7	+59	+98	+24	+0.19	+0.24	+43.76

Dam's Production Record: WR 2-104, YR 2-98.

54 MDG ABERDEEN 3026 BULL

Reg: 17646494 • Calved: 2/4/2013 • Tattoo: 3026

SIRE: TC ABERDEEN 759 #

SILVEIRAS WAY OUT WEST 3527	BW: 72
SILVEIRAS OUT WEST 7026	205
DAM: 1045 MDG WEST PRIDE	WT: 698
SILVEIRAS KIND JANIE 5017	365
BASIN EXT 661L #	WT: 1120
MDG PRIDE 4102 #	
M D G PRIDE 4031	

CED	BW	WW	YW	MILK	MARB	RE	\$B
+11	+0.4	+49	+88	+33	+0.18	+0.62	+36.61

Dam's Production Record: WR 99, YR 97.
First calf heifer.

55 MDG ABERDEEN 3032 BULL

Reg: 17646495 • Calved: 2/5/2013 • Tattoo: 3032

SIRE: TC ABERDEEN 759

HARB PENDLETON 765 J H #	BW: 80
21AR-PENDELTON 7013A	205
DAM: 1087 MDG PEND BEAUTY	WT: 702
21AR BLACKCAP F89B	365
LEACHMAN CASCADE #	WT: 1254
MDG BEAUTY 5027	
MDG BEAUTY 8059	

CED	BW	WW	YW	MILK	MARB	RE	\$B
+8	+2.1	+48	+93	+30	+0.20	+0.71	+54.36

Dam's Production Record: WR 100, YR 109.
First calf heifer.

56 MDG ABERDEEN 3101 BULL

Reg: 17646518 • Calved: 2/17/2013 • Tattoo: 3101

SIRE: TC ABERDEEN 759 #

CONNEALY DANNY BOY #	BW: 88
VERMILION DANNY BOY R526	205
DAM: MDG ESPA 8108	WT: 730
VERMILION PRIZE 0011	365
FF KANSAS 1	WT: 1213
MDG ESPA 9066	
MDG ESPA 6110 #	

CED	BW	WW	YW	MILK	MARB	RE	\$B
+5	+2.1	+53	+93	+27	+0.51	+0.82	+82.23

Dam's Production Record: WR 4-104, YR 3-103.

57 MDG MANDATE 3115 BULL

Reg: 17646522 • Calved: 2/19/2013 • Tattoo: 3115

SIRE: SYDGEN MANDATE 6079

TC STOCKMAN 365 #	BW: 80
G 13 STRUCTURE #	205
DAM: MDG STRUCTURE 7098	WT: 739
G 13 TRAVELER 9428 #	365
MDG 7068 OF CHAIRMAN	WT: 1283
MDG HENRIETTA 9171 #	
M D G HENRIETTA 7083 #	

CED	BW	WW	YW	MILK	MARB	RE	\$B
+8	+1.8	+55	+92	+28	+0.53	+0.14	+85.16

Dam's Production Record: WR 5-100, YR 4-99.



LOT 58 - 303G

58 MRG MANDATE 303G BULL
 Reg: 17649356 • Calved: 2/2/2013 • Tattoo: 303G

SIRE: SYDGEN MANDATE 6079

SUMMITCREST HI FLYER 3B18 #	BW: 74
RCC PREFERENCE #	205
W A F J BAND ELBADINA 97	WT: 670
DAM: MRG MISS PREFERENCE 811G	
VERMILION RIGHT TIME H918 #	365
MRG MISS VICKI 307G	WT: 1153
MRG MISS VICKI 602G	

CED	BW	WW	YW	MILK	MARB	RE	\$B
+11	+0.8	+57	+106	+24	+0.40	+0.05	+59.50

Dam's Production Record: WR 4-98, YR 2-100.

59 MDG PENDELTON 3100 BULL
 Reg: 17646517 • Calved: 2/17/2013 • Tattoo: 3100

SIRE: 21AR-PENDELTON 7013A

CONNEALY ONWARD #	BW: 88
KG ONWARD 5246	205
KG BANDOLIERMERE 0318	WT: 663
DAM: MDG BEAUTY 8106	
VERMILION JP DATELINE L845	365
MDG BEAUTY 6113	WT: 1111
M D G BEAUTY 7066	

CED	BW	WW	YW	MILK	MARB	RE	\$B
+4	+2.5	+43	+77	+16	+0.23	+0.19	+57.41

Dam's Production Record: WR 4-99, YR 2-100.

60 MDG PENDLETON 3141 BULL
 Reg: 17646529 • Calved: 2/25/2013 • Tattoo: 3141

SIRE: 21AR-PENDELTON 7013A

VERMILION DATELINE 7078 #	BW: 84
VERMILION JP DATELINE L845	205
VERMILION 155 LASS J P 2022 #	WT: 700
DAM: MDG PRIDE 7116	
J R ROCKN AMBUSH 178H	365
M D G PRIDE 0100	WT: 1159
MDG PRIDE 6066 #	

CED	BW	WW	YW	MILK	MARB	RE	\$B
+5	+1.8	+44	+77	+17	+0.28	+0.05	+60.54

Dam's Production Record: WR 5-98, YR 3-100.

61 MDG PENDLETON 3164 BULL
 Reg: 17646537 • Calved: 3/5/2013 • Tattoo: 3164

SIRE: 21AR-PENDELTON 7013A

LEACHMAN RIGHT TIME #	BW: 80
VERMILION RIGHT TIME H918 #	205
VERMILION ROSELLA 6081	WT: 713
DAM: MDG BLACKBIRD 4058 #	
M D G FRANCHISE 3069	365
MDG BLACKBIRD 8097	WT: 1156
M D G BLACKBIRD 7022 #	

CED	BW	WW	YW	MILK	MARB	RE	\$B
+5	+2.3	+50	+84	+16	+0.19	+0.17	+61.09

Dam's Production Record: WR 8-103, YR 5-104.

62 MDG PENDLETON 3165 BULL
 Reg: 17651186 • Calved: 3/5/2013 • Tattoo: 3165

SIRE: 21AR-PENDELTON 7013A

LEACHMAN RIGHT TIME #	BW: 82
VERMILION RIGHT TIME H918 #	205
VERMILION ROSELLA 6081	WT: 755
DAM: M R G ERICA 123G #	
BASIN EMULATION 178C #	365
M R G ERICA 708G #	WT: 1219
M R G ERICA 16G	

CED	BW	WW	YW	MILK	MARB	RE	\$B
+4	+2.2	+53	+86	+19	+0.24	+0.07	+62.00

Dam's Production Record: WR 11-108, YR 10-105.
 Pathfinder cow.

63 MDG PENDLETON 3189 BULL
 Reg: 17646542 • Calved: 3/12/2013 • Tattoo: 3189

SIRE: 21AR-PENDELTON 7013A

LEACHMAN RIGHT TIME #	BW: 78
VERMILION RIGHT TIME H918 #	205
VERMILION ROSELLA 6081	WT: 707
DAM: MDG PRIDE 2138 #	
PREMIER CHAIRMAN 6011A #	365
MDG PRIDE 8006	WT: 1126
MDG PRIDE 6077	

CED	BW	WW	YW	MILK	MARB	RE	\$B
+6	+1.7	+50	+82	+16	+0.14	+0.00	+47.61

Dam's Production Record: WR 9-103, YR 8-101.
 Pathfinder cow.

64 TLG FRONTMAN G313 BULL
 Reg: 17649367 • Calved: 2/12/2013 • Tattoo: G313

SIRE: KESSLERS FRONTMAN R001

CONNEALY FRONTLINE #	BW: 80
LEACHMAN CASCADE #	205
LEACHMAN BLACKCAP 3053	WT: 748
DAM: TLG SENTRY G411 #	
BASIN EMULATION 178C #	365
TLG SENTRY G809	WT: 1164
T L G SENTRY G25	

CED	BW	WW	YW	MILK	MARB	RE	\$B
+7	+0.9	+49	+81	+32	+0.07	+0.52	+50.74

Dam's Production Record: WR 8-105, YR 8-102
 Pathfinder cow.



LOT 65 - G303

68

TLG DIVIDE G323

BULL

Reg: 17649787 • Calved: 2/20/2013 • Tattoo: G323

SIRE: FF DIVIDE X1

SUMMITCREST HIGH PRIME 0H29 #
LEACHMAN HIGH PRIME 3722
LEACHMAN BLACKCAP 6260
DAM: TLG HEIRESS G618 #
BASIN EXT 661L #
TLG HEIRESS G409
TLG HEIRESS G203

BW:	82
205	
WT:	720
365	
WT:	1186

CED	BW	WW	YW	MILK	MARB	RE	\$B
+7	+1.5	+52	+87	+24	+0.40	+0.33	+66.74

Dam's Production Record: WR 6-105, YR 4-104.
Pathfinder cow.

65

TLG DIVIDE G303

BULL

Reg: 17649790 • Calved: 2/4/2013 • Tattoo: G303

SIRE: FF DIVIDE X1

CONNEALY ONWARD #
KG ONWARD 5246
DAM: G107 TLG SENTRY ONWARD
RR 0415 IMAGE 5922
TLG SENTRY G725
TLG SENTRY G809

BW:	84
205	
WT:	861
365	
WT:	1272

CED	BW	WW	YW	MILK	MARB	RE	\$B
+4	+2.5	+64	+103	+26	+0.31	+0.36	+59.95

Dam's Production Record: WR 122, YR 110.
First calf heifer.

69

TLG DIVIDE G324

BULL

Reg: 17649788 • Calved: 2/20/2013 • Tattoo: G324

SIRE: FF DIVIDE X1

CONNEALY FRONT PAGE 0228 #
KESSLERS FRONTMAN R001
DAM: G118 TLG SENTRY FRONTMAN
KESSLERS BELL 0024
KG ONWARD 5246
TLG SENTRY G918 #
TLG SENTRY G523

BW:	66
205	
WT:	731
365	
WT:	1182

CED	BW	WW	YW	MILK	MARB	RE	\$B
+10	+0.2	+54	+92	+30	+0.26	+0.33	+48.64

Dam's Production Record: WR 104, YR 102.
First calf heifer.

66

MDG DIVIDE 3105

BULL

Reg: 17646520 • Calved: 2/18/2013 • Tattoo: 3105

SIRE: FF DIVIDE X1

VERMILION JUST IN TIME
VERMILION JUST IN TIME T264
DAM: 1054 MDG LASS
VERMILION PRIDE 1446 #
PREMIER CHAIRMAN 6011A #
MDG LASS 3129
MDG LASS 5114

BW:	86
205	
WT:	809
365	
WT:	1345

CED	BW	WW	YW	MILK	MARB	RE	\$B
+2	+3.5	+57	+96	+27	+0.23	+0.50	+63.97

Dam's Production Record: WR 115, YR 116.
First calf heifer.

70

MRG DIVIDE 317G

BULL

Reg: 17649789 • Calved: 2/21/2013 • Tattoo: 317G

SIRE: FF DIVIDE X1

E7 GURU 286
MASTER MONSTER 416
DAM: MRG LASS 011G
M A BROOK CLEO 16
PREMIER CHAIRMAN 6011A #
MRG LASS 401G #
MRG LASS 226G

BW:	82
205	
WT:	735
365	
WT:	1225

CED	BW	WW	YW	MILK	MARB	RE	\$B
+5	+1.9	+53	+92	+25	+0.25	+0.42	+57.28

Dam's Production Record: WR 2-103, YR 1-106.

67

MDG DIVIDE 3121

BULL

Reg: 17646524 • Calved: 2/20/2013 • Tattoo: 3121

SIRE: FF DIVIDE X1

CONNEALY FRONTLINE #
LEACHMAN CASCADE #
DAM: MDG BEAUTY 6031
LEACHMAN BLACKCAP 3053
VERMILION 3548 DRIVER 5655
MDG BEAUTY 8059
M D G BEAUTY 2106 #

BW:	78
205	
WT:	709
365	
WT:	1138

CED	BW	WW	YW	MILK	MARB	RE	\$B
+9	+0.5	+50	+86	+26	+0.38	+0.40	+59.48

Dam's Production Record: WR 5-102, YR 4-102.

71

MDG WEST 3005

BULL

Reg: 17646486 • Calved: 1/29/2013 • Tattoo: 3005

SIRE: SILVEIRAS OUT WEST 7026

LEACHMAN RIGHT TIME #
VERMILION RIGHT TIME H918 #
DAM: MDG ERICA 3052
VERMILION ROSELLA 6081
PREMIER CHAIRMAN 6011A #
M D G ERICA 7018
M D G ERICA 7090 #

BW:	88
205	
WT:	693
365	
WT:	1141

CED	BW	WW	YW	MILK	MARB	RE	\$B
+7	+2.3	+51	+80	+21	+0.49	+0.30	+69.69

Dam's Production Record: WR 9-102, YR 7-100.



LOT 72 - 3047

72 MDG WEST 3047 BULL

Reg: 17650558 • Calved: 2/8/2013 • Tattoo: 3047

SIRE: SILVEIRAS OUT WEST 7026

E7 SUMMIT 42J8	G D A R TRAVELER 561 #	BW : 80
DAM: MDG PRIDE 7086	E7 MARLAMERE 2J8 #	205
M D G PRIDE 0034	F F WESTERN DIVIDEND Y13 #	WT: 674
	M D G PRIDE 8090	365
		WT: 1178

CED	BW	WW	YW	MILK	MARB	RE	\$B
+10	+1.0	+43	+76	+23	+0.45	+0.25	+68.61

Dam's Production Record: WR 5-101, YR 5-103.



LOT 75 - 3154

75 MDG COWCUTTA 3154 BULL

Reg: 17646533 • Calved: 2/28/2013 • Tattoo: 3154

SIRE: VERMILION COWCUTTA X840

PREMIER CHAIRMAN 6011A #	GREENBRAE CHAIRMAN #	BW : 66
DAM: MDG PRIDE 5092	J K QUEEN 141	205
M D G PRIDE 0034	F F WESTERN DIVIDEND Y13 #	WT: 652
	M D G PRIDE 8090	365
		WT: 1143

CED	BW	WW	YW	MILK	MARB	RE	\$B
+12	-1.8	+41	+70	+21	+0.10	+0.21	+35.68

Dam's Production Record: WR 7-96, YR 2-99.

73 MDG WEST 3089 BULL

Reg: 17646513 • Calved: 2/16/2013 • Tattoo: 3089

SIRE: SILVEIRAS OUT WEST 7026

VERMILION RIGHT TIME H918 #	LEACHMAN RIGHT TIME #	BW : 78
DAM: MDG MISS WIX 4008	VERMILION ROSELLA 6081	205
M D G MISS WIX 7065 #	PREMIER CHAIRMAN 6011A #	WT: 747
	M D G MISS WIX 7056 #	365
		WT: 1163

CED	BW	WW	YW	MILK	MARB	RE	\$B
+11	+0.2	+53	+82	+25	+0.44	+0.36	+72.27

Dam's Production Record: WR 8-108, YR 7-104.

76 MDG COWCUTTA 3182 BULL

Reg: 17646540 • Calved: 3/10/2013 • Tattoo: 3182

SIRE: VERMILION COWCUTTA X840

KG ONWARD 5246	CONNELLY ONWARD #	BW : 80
DAM: MDG PRIDE 0073	KG BANDOLIERMERE 0318	205
MDG PRIDE 4182	BASIN EXT 661L #	WT: 741
	MDG PRIDE 2057	365
		WT: 1202

CED	BW	WW	YW	MILK	MARB	RE	\$B
+7	+0.8	+55	+93	+24	+0.11	+0.16	+43.80

Dam's Production Record: WR 2-102, YR 2-101.

74 MDG WEST 3149 BULL

Reg: 17650559 • Calved: 2/27/2013 • Tattoo: 3149

SIRE: SILVEIRAS OUT WEST 7026

PREMIER CHAIRMAN 6011A #	GREENBRAE CHAIRMAN #	BW : 86
DAM: MDG ERICA 5075	J K QUEEN 141	205
MDG ERICA 3181 #	VERMILION RIGHT TIME H918 #	WT: 684
	MDG ERICA 8014 #	365
		WT: 1103

CED	BW	WW	YW	MILK	MARB	RE	\$B
+9	+1.6	+46	+78	+23	+0.49	+0.38	+66.32

Dam's Production Record: WR 7-100, YR 5-102.

Thank you to our ranch veterinarian:

Clint Hilt, DVM

Hilt Veterinary Service LLC.

Dutton, MT 59433

406.463.2426

We appreciate all you dedication

to our program

whether it's for the cattle or horses.

Thank you...


Thank you to all who make our sale possible. From you the buyers, to the trucker, the lunch help and cleaning crew we appreciate you all. For the professionals we hire to work with us on herd health, feeding, veterinary needs, and sale preparation we want to thank you. Without the help of our crew, family, friends and neighbors during, calving, branding, weighing and shipping we would never be able to pull off these sales.

To the friends who give their time the weekend before the sale to help Mike & Ted clean, retag, and feed the bulls before the sale and then work sale day we owe you!

To our sale day crew on the auction block and the ring men we appreciate your efforts in running a smooth sale.

For the great photos of the bulls we thank John Goggins, and thank you to our auctioneer, Roger for always doing a great job.

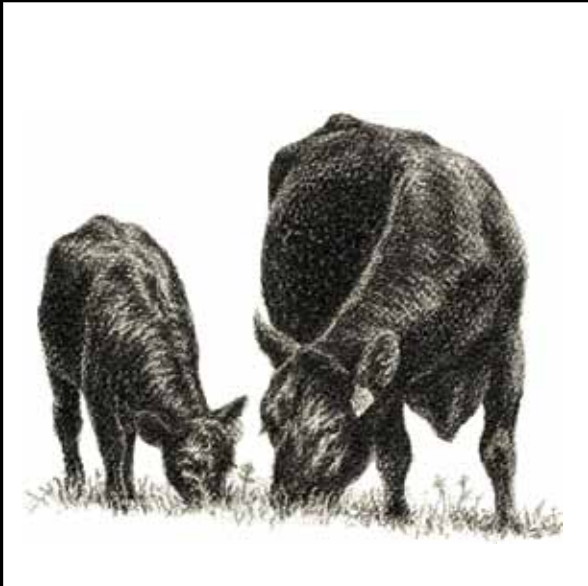
To those of you who are joining us on sale day our heartfelt thanks for your support.



WestFeeds[®]

"Excellence in Animal Nutrition"

Tubs Blocks Minerals Range & Feedlot



Equine Feed Beef Energy Feed *Goat Feed Swine Feed Poultry*

Dairy Proteins Show Feed Pet Food


Shane Moran
Territory Manager

Westfeeds, Inc.
Great Falls
(cell) 406-320-2580

Karnell Perry
Manager/
Feed Store
406-268-1543



**MOUNTAIN VIEW CO-OP/
FEED STORE**
*Thanks to Karnell and crew
for furnishing the donuts and
coffee sale morning*



AGRIBASICS
FERTILIZER INC.

Thanks for your help!


Rod Brooks, 406-761-4024
Great Falls, MT 59406

GOLLAHER RANCH

3112 Cascade Hound Creek Road
Cascade, MT 59421

GOLLAHER RANCH
75 Yearling
Angus Bulls Sell

**For dollars
invested in bulls,
we offer the best value
you will find anywhere.**



**Join us at the ranch
April 7, 2014**

**Myrle, Delight & Ted Gollaher
406.468.2273
Mike & Barbara Jo
406.468.0079**