

37th Annual

GOLLAHER RANCH

BULL SALE

MONDAY

APRIL 4, 2016 • 1:00 PM

At the ranch • Cascade, Montana

SELLING:

80

Yearling Angus

Performance Tested Bulls





Myrle & Delight Gollaher
3112 Cascade Hound Creek Road • Cascade, MT 59421

406-468-2273

www.GollaherRanch.com
gollaherranch@yahoo.com

Welcome to the 37th annual Gollaher Ranch yearling bull sale. Thank you for looking over our sale offering.

We are offering a set of bulls that we feel were bred to provide calving ease, without compromising their performance for growth, feed efficiency and carcass value. These are all traits sought by progressive cattle producers.

Eighty (80%) percent of the bulls are suitable for use on heifers. We have tried to emphasize length of body, depth, muscling, and temperament in selecting the bulls for the sale.

We feel the 2015 bulls will mature into a great group of cow bulls adding to their value and a nice return on your original investment.

Data in this catalog is as of March 4, 2016. Final weight, scrotal measurements, and ultrasound scan data will be available sale day. If you have any questions about our operation, the bulls or our cow herd, please contact us.

Thanks for your interest in our sale and we look forward to see you on Monday, April 4, 2016. Lunch is at noon and the sale starts at 1 pm.

-----The Gollahers

For dollars invested in bulls, we offer the best value you will find anywhere.



37th Annual

GOLLAHER RANCH BULL SALE

At the ranch • Cascade, MT • Lunch Served at 12:00 Noon

MONDAY
APRIL 4, 2016 • 1:00 PM

Sale Location

Gollaher Ranch is located 6 miles SE of Cascade, MT. Take Exit 254 (from S) or 256 (from N) off Interstate 15, turn East on Central Avenue, cross the Missouri River and follow MT Hwy 330 to the ranch. Watch for signs.

Delivery

Gollaher Ranch will deliver bulls free for the first 250 miles, after that charges will be at cost. Delivery will occur as soon as possible after the sale.

Sale Day Phone
406.468.2273

Insurance

Bull Mortality & Loss of Use Insurance through Tyler Holland of Novich Insurance. See information on page 20.

Auctioneer:
Roger Jacobs
406.373.6124

Announcements

Announcements from the block by the owners or auctioneer will take precedence over printed material. Supplemental data and corrections will be available sale day.

Bidding

Absentee bidding maybe made with any of the livestock press representatives or the auctioneer, Roger Jacobs. Contact the Gollaher family if you need any other assistance or have questions

Terms and Conditions

All bulls sell under the terms of the American Angus Association. Settlement must be made at the time of sale unless prior arrangements have been made with the owners.

Livestock Press Representatives

John Goggins..... 406.698.4159
Western Livestock Reporter
Kurt Kangas.....406.366-4190
American Angus Assn
Don Rehm..... 406.322.4707 or 406.321.2000 (cell)
Special Assignment

Liability

Gollaher Ranch or Myrle or Delight Gollaher will assume no liability whatsoever for any accidents or injury which may occur sale day.

Health

All bulls have been semen tested with a complete breeding physical under the direction of Hilt Veterinary Service, Dutton, MT.
All bulls will be BVD tested.

Transportation & Accommodations

Gollaher Ranch is 30 minutes south of Great Falls International Airport Motel accommodations available in Cascade:

Badger Motel 406-468-9330

A & C Motel 406-468-2513

Please contact us for further assistance.

EPD Data

Data not contained in this catalog for the individual bulls will be available sale day. Epd's are as of 03-04-2016.
Ultrasound data, final weights and scrotal measurements available sale day.

**Buying, Selling And Raising Cattle With
An Emphasis On Quality Angus Traits.**

Reference Sires



12
sons sells

Reference Sire CONNEALY IRISH 0204

Reg: 16761484 • Calved: 01/26/2010 • Tat: 0204

CONNEALY COWBOY
CONNEALY WRANGLER
KELLY OF CONANGA 577

MYTTY IN FOCUS #
BLACK CREST OF CONANGA 5640 #
BLACK CRESHA OF CONANGA 3314

C A FUTURE DIRECTION 5321 #
BECKAH OF CONANGA 747
G A R GRID MAKER #
CONNEALY BANDO 133
S A F FOCUS OF E R #
MYTTY COUNTESS 906
C R A BEXTOR 872 5205 608 #
BLACK CRESA OF CONANGA 5332

CED	BW	WW	YW	MILK	SC		
+11	-.7	+50	+102	+23	+1.25		
CW	MARB	RE	FAT	\$W	\$F	\$G	\$B
+49	+.62	+.74	-.063	+48.59	+68.96	+43.09	+163.28



10
sons sells

Reference Sire CONNEALY BLACK GRANITE

Reg: 17028963 • Calved: 01/13/2011 • Tat: 133

CONNEALY CONSENSUS
CONNEALY CONSENSUS 7229 #
BLUE LILLY OF CONANGA 16

S A V BISMARCK 5682 #
EURA ELGA OF CONANGA 9109 #
SCAR EURA CAL OF CONANGA 56B

KMK ALLIANCE 6595 187 #
BLINDA OF CONANGA 004
WOODHILL ADMIRAL 77K #
BLUE CASH OF CONANGA 6020
G A R GRID MAKER #
S A V ABIGALE 0451
CONNEALY BLACK BARON OF
ELGINA OF CONANGA 868 232

CED	BW	WW	YW	MILK	SC		
+13	+.2	+61	+104	+30	+1.16		
CW	MARB	RE	FAT	\$W	\$F	\$G	\$B
+45	+.60	+1.16	+.042	+75.30	+55.48	+38.25	+140.92



3
sons sells

Reference Sire WOODHILL LOMBARDI

Reg: 16706161 • Calved: 02/08/2010 • Tat: X16

BOYD NEW DAY 8005 #
MCC DAYBREAK #
MCC MISS FOCUS 134 #

MYTTY IN FOCUS #
WOODHILL EVERGREEN S28-U6
WOODHILL EVERGREEN 62N-S28

A A R NEW TREND #
S V F FOREVER LADY 57D
S A F FOCUS OF E R #
M C C MISS CHIEF 519
S A F FOCUS OF E R #
MYTTY COUNTESS 906
WOODHILL FORESIGHT #
WOODHILL EVERGREEN 1058-62N

CED	BW	WW	YW	MILK	SC		
+14	-2.0	+54	+98	+30	+2.05		
CW	MARB	RE	FAT	\$W	\$F	\$G	\$B
+38	+.64	+1.09	+.023	+61.99	+51.81	+41.71	+131.34



14 sons sells

Reference Sire CONNEALY COUNSELOR

Reg: +16761497 • Calved: 02/13/2010 • Tat: 060L

G A R RETAIL PRODUCT #
CONNEALY MENTOR 7374 #
EXECUTA OF CONANGA 939 #

CONNEALY LEAD ON #
JAZE OF CONANGA 234
JAYCEE OF CONANGA 233

G A R PRECISION 1680 #
G A R EXT 4927
JAUER 353 TRAVELER 589 27 #
EXEC OF CONANGA 6940 #
CONNEALY LEADTIME #
ELIGENCE PLUS OF CONANGA
ROCKN'D AMBUSH 1531 #
JOY OF CONANGA 6230 #

CED	BW	WW	YW	MILK	SC		
+11	+.1	+60	+108	+26	+1.83		
CW	MARB	RE	FAT	\$W	\$F	\$G	\$B
+37	+.54	+1.29	-.018	+58.94	+58.60	+43.90	+125.87

Reference Sires



Reference Sire **TC ABERDEEN 759**

Reg: #15840414 • Calved: 01/27/2007 • Tat: 759

B A R EXT TRAVELER 205 #
C R A BEXTOR 872 5205 608 #
 CRA LADY JAYE 608 498 S EASY

BON VIEW NEW DESIGN 208 #
TC BLACKBIRD 4034 #
 TC BLACKBIRD 1013

N BAR EMULATION EXT #
 B A R QUEEN TRAVELER 3015 #
 G A R SLEEP EASY 1009 #
 H H F 917 LADY 975 498
 B/R NEW DESIGN 036 #
 BON VIEW ERICA 443 #
 S A F FAME #
 TC BLACKBIRD 9032

CED		BW		WW		YW		MILK		SC	
+9		+.4		+53		+99		+30		+.63	
CW	MARB	RE	FAT	\$W	\$F	\$G	\$B				
+31	+.48	+1.20	+.022	+66.81	+58.03	+38.72	+116.82				



Reference Sire **MYTTY BEXTOR 86W**

Reg: 16409704 • Calved: 01/23/2009 • Tat: 86W

B A R EXT TRAVELER 205 #
C R A BEXTOR 872 5205 608 #
 CRA LADY JAYE 608 498 S EASY

MYTTY IN FOCUS #
MYTTY PRIDE 32S #
 ADAMS DURATREND PRIDE 6113

N BAR EMULATION EXT #
 B A R QUEEN TRAVELER 3015 #
 G A R SLEEP EASY 1009 #
 H H F 917 LADY 975 498
 S A F FOCUS OF E R #
 MYTTY COUNTESS 906
 HBR DURATREND 2315
 L F PRIDE 3113

CED		BW		WW		YW		MILK		SC	
+7		+.6		+63		+106		+34		+.85	
CW	MARB	RE	FAT	\$W	\$F	\$G	\$B				
+4	+.67	+.38	+.011	+82.21	+71.88	+41.54	+64.46				

Reference Sire **SITZ RLS UPWARD 8971** 14 sons sell

Reg: 16884843 • Calved: 03/02/2011 • Tat: 8971

CONNELLY ONWARD #
SITZ UPWARD 307R #
 SITZ HENRIETTA PRIDE 81M

WOODHILL FORESIGHT #
SITZ RLS EISA EVERGREEN 0288
 R L S EISA EVERGREEN 5018

CONNELLY LEAD ON #
 ALTUNE OF CONANGA 6104
 SITZ VALUE 7097 #
 SITZ HENRIETTA PRIDE 1370
 PAPA FORTE 1921 #
 BON VIEW GAMMER 85
 SITZ ALLIANCE 6595
 R L S EISA EVERGREEN 1078

CED		BW		WW		YW		MILK		SC	
+10		+.1		+63		+106		+30		+2.20	
CW	MARB	RE	FAT	\$W	\$F	\$G	\$B				
+57	+.61	+.63	+.074	+78.56	+51.92	+24.93	+144.48				

Reference Sire **BOBCAT X FACTOR X22** 14 sons sell

Reg: 16803800 • Calved: 02/19/2010 • Tat: X22

NICHOLS EXTRA K205 #
VERMILION X FACTOR #
 VERMILION LADY 2888

CONNELLY DANNY BOY #
BOBCAT BARBARA 826
 VERMILION BLANCHE 9888

NICHOLS EXTRA H6 #
 NICHOLS BLACK HEIRESS F346
 VERMILION DATELINE 7078 #
 VERMILION LADY 7993 #
 CONNEALY TIMELINE #
 ENERGY OF CONANGA 4851
 GIBB BANDO 598-1507 #
 VERMILION BLANCHE 5807

CED		BW		WW		YW		MILK		SC	
+12		-1.4		+53		+89		+11		+2.29	
CW	MARB	RE	FAT	\$W	\$F	\$G	\$B				
+39	+.37	+.78	+.006	+44.05	+35.65	+30.11	+119.51				

Reference Sire **KG ALLIANCE 0168** 3 sons sell

Reg: 16779890 • Calved: 02/06/2010 • Tat: 0168

SITZ ALLIANCE 6595 #
SITZ ALLIANCE 7544 #
 SITZ PRIDE 2561

G A R RETAIL PRODUCT #
KG JUDITH 8145
 DJ JUDITH S214

SITZ TRAVELER 8180 #
 SITZ BARBARAMERE JET 2698 #
 D H D TRAVELER 6807 #
 SITZ PRIDE 2188
 G A R PRECISION 1680 #
 G A R EXT 4927
 KAHN BROADBAND R A 94L #
 ER JUDITH K035

CED		BW		WW		YW		MILK		SC	
+9		-.5		+53		+103		+33		+2.18	
CW	MARB	RE	FAT	\$W	\$F	\$G	\$B				
+40	+.42	+.23	+.039	+54.26	+67.06	+21.00	+121.52				

Reference Sire **KG FOCAL POINT 1143** 5 sons sell

Reg: 17127231 • Calved: 02/03/2011 • Tat: 1143

MYTTY IN FOCUS #
KG FOCAL POINT 8100
 KG PRINCESS 6304

CONNELLY CONTRAST #
KG RITO LADY 9128
 KG RITO LADY 7749

S A F FOCUS OF E R #
 MYTTY COUNTESS 906
 KG 5594 TRAVELER 3020
 KG PRINCESS 1149
 CONNEALY DANNY BOY #
 DORIS OF CONANGA 669 #
 VERMILION 7078 DATELINE M451
 KG RITO LADY 3212

CED		BW		WW		YW		MILK		SC	
+11		-1.0		+47		+91		+24		+1.79	
CW	MARB	RE	FAT	\$W	\$F	\$G	\$B				
+31	+.52	+.51	+.056	+42.94	+49.17	+28.42	+106.54				

Reference Sires

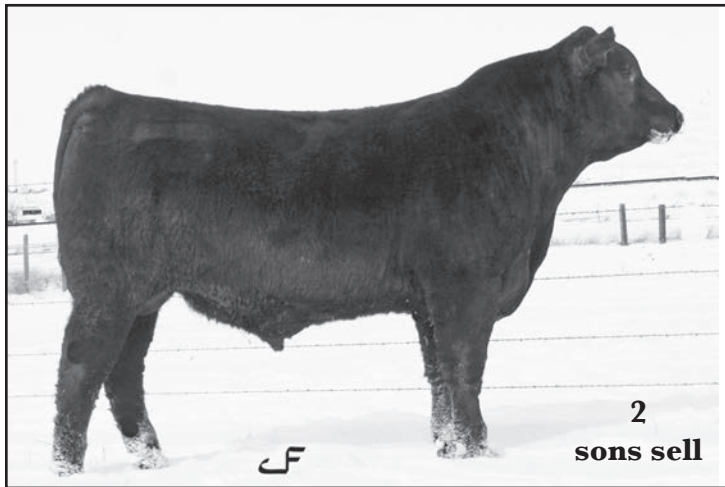
Reference Sire **MYTTY WINDY 758 12X** 3 sons sell

Reg: 16699012 • Calved: 01/06/2010 • Tat: 12X

H A R B WINDY 702 JH #
H A R B WINDY 758 JH
 H A R B JUANADA ERICA 571 JH #
 MYTTY IN FOCUS #
MYTTY COUNTESS JACKIE 90U
 MYTTY COUNTESS JACKIE 909

A A R REALLY WINDY 1205 #
 H A R B BLACK LADY 073 JH
 S A V FINAL ANSWER 0035 #
 H A R B JUANADA ERICA 391 JH
 S A F FOCUS OF E R #
 MYTTY COUNTESS 906
 T C STOCKMAN 365 #
 4 M COUNTESS JACKIE C46 #

CED		BW		WW		YW		MILK		SC	
+14		-1.4		+32		+78		+20		+1.82	
CW	MARB	RE	FAT	\$W	\$F	\$G	\$B				
+21	+51	+57	+0.68	+20.44	+41.01	+29.32	+86.84				



Reference Sire **CIRCLE A INCENTIVE** 1 son sells

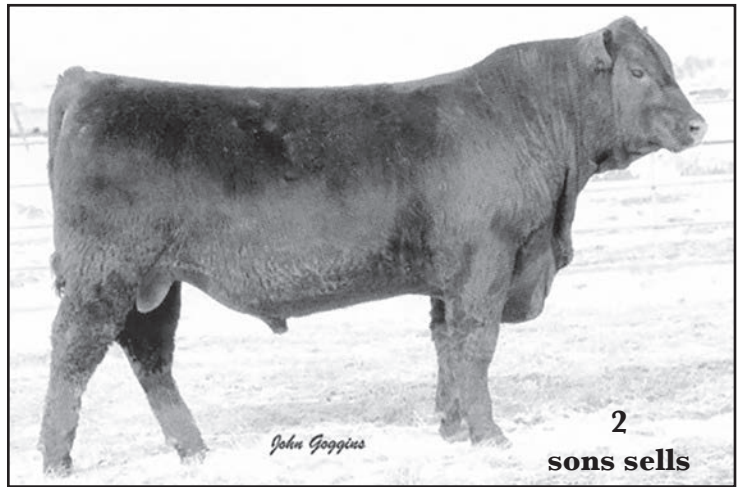
Reg: 16005537 • Calved: 12/19/2007 • Tat: 7594

S S TRAVELER 6807 T510 #
S S OBJECTIVE T510 0T26 #
 S S MISS RITA R011 7R8

C R A BEXTOR 872 5205 608 #
CIRCLE A BEAUTY 5566 #
 M G S A BEAUTY 4007

D H D TRAVELER 6807 #
 S S MISS HI SPADE A114 #
 S S RITO RITO R76 R011
 S S MISS ULTRESS U56
 B A R EXT TRAVELER 205 #
 CRA LADY JAYE 608 498 S EASY
 G A R PRECISION 1680 #
 BIG ROK BEAUTY 742

CED		BW		WW		YW		MILK		SC	
+7		+1.8		+64		+114		+15		+1.31	
CW	MARB	RE	FAT	\$W	\$F	\$G	\$B				
+34	+1.18	+66	-.029	+53.37	+69.27	+54.95	+133.98				



Reference Sire **FF DIVIDE X1**

Reg: 16692673 • Calved: 01/01/2010 • Tat: X1

G A R GRID MAKER #
S A V BISMARCK 5682
 S A V ABIGALE 0451

M F DESTROYER 093 #
JF EMPRESS U4
 FF EMPRESS S13

G D A R TRAVELER 044 #
 G A R PRECISION 2536
 SCHOENES FIX IT 826F #
 S A V ABIGALE 6062
 EXAR SUDDEN IMPACT 1537
 M F CHERRY 115
 ACF HIGH PRIME 2245
 JJ EMPRESS P46

CED		BW		WW		YW		MILK		SC	
+8		+.5		+54		+96		+21		+.60	
CW	MARB	RE	FAT	\$W	\$F	\$G	\$B				
+34	+56	+73	+0.002	+51.58	+63.46	+37.92	+133.52				

Reference Sire **VERMILION DEMPSEY A061**

Reg: 17547303 • Calved: 01/28/2013 • Tat: A061

CONNEALY REVENUE 7289
FF DEMPSEY Y11
 FF HERRIETTA PRIDE W10

S CHISUM 6175 #
VERMILION EULIMA 1244
 VERMILION EULIMA 5480 #

S A V NET WORTH 4200 #
 HYANNIS OF CONANGA 577 #
 S A V FINAL ANSWER 0035 #
 FF FANNY T35
 S ALLIANCE 3313
 S GLORIA 464 #
 VERMILION DATELINE 7078 #
 VERMILION EULIMA 9270

CED		BW		WW		YW		MILK		SC	
+8		+.2		+53		+107		+20			
CW	MARB	RE	FAT	\$W	\$F	\$G	\$B				
+54	+58	+70	+0.022	+38.48	+74.62	+32.58	+161.59				

MEET OUR NEWEST HERD SIRE!
IMPRESSIVE SET OF SONS
WILL SELL IN THE 2017 SALE.

Reference Sire **VERMILION SPUR B143**

Reg: 17841933 • Calved: 02/12/2014 • Tat: B143

CONNEALY STIMULUS 8419 #
CONNEALY SPUR
 JAZZA OF CONANGA 8594 #

CONNEALY DUBLIN 8223 #
VERMILION PATTIE 1117 #
 VERMILION PATTIE 8114 #

H A POWER ALLIANCE 1025 #
 BLACK CRESSA OF CONANGA 5332
 T C GRID TOPPER 355 #
 JEMMA OF CONANGA 5614
 CONNEALY FULL FREIGHT
 BLACK RINA OF CONANGA 69
 HARB ONWARD 786 JH #
 VERMILION PATTIE 5414

CED		BW		WW		YW		MILK		SC	
+4		+1.6		+63		+1119		+27		+.83	
CW	MARB	RE	FAT	\$W	\$F	\$G	\$B				
+44	+48	+87	+0.023	+65.05	+83.83	+33.02	+139.05				





LOT 1 - 5057



LOT 3 - 5010

1 **GOLLAHER LOMBARDI 5057** *BULL*
 Reg: 18284328 • Calved: 02/05/15 • Tattoo: 5057

SIRE: WOODHILL LOMBARDI

VERMILION JUST IN TIME
 VERMILION JUST IN TIME T264
 VERMILION PRIDE 1446 #
DAM: MDG LASS 0198 #
 WOODLAWN CHARGE ON 14 #
 MDG CHARGE ON LASS 7038 #
 MDG LASS 3030 #

BW:	80
	205
WT:	827
	365
WT:	1334

CED	BW	WW	YW	MILK	MARB	RE	\$B
+8	-.5	+64	+108	+31	I+.48	I+.62	+144.19

4 WR 112, 2 YR 105.

3 **GOLLAHER IRISH 5010** *BULL*
 Reg: 18284307 • Calved: 01/29/15 • Tattoo: 5010

SIRE: CONNEALY IRISH 0204

S A V IRON MOUNTAIN 8066 #
 JF IRON SIGHT Y46
 JAF EVERELDA ENTENSE 15U
DAM: MDG CHLOE IRON 3177
 RCC PREFERENCE #
 MDG CHLOE 0049
 MDG CHLOE 8051

BW:	80
	205
WT:	788
	365
WT:	1234

CED	BW	WW	YW	MILK	MARB	RE	\$B
+8	+0	+59	+101	+25	I+.23	I+.49	+100.62

First calf heifer.



LOT 2 - 5053



LOT 4 - 5017

2 **GOLLAHER UPWARD 5053** *BULL*
 Reg: 18284327 • Calved: 02/09/15 • Tattoo: 5053

SIRE: SITZ RLS UPWARD 8971

S A V IRON MOUNTAIN 8066 #
 JF IRON SIGHT Y46
 JAF EVERELDA ENTENSE 15U
DAM: MDG IMAGE IRON 3207
 H A IMAGE MAKER 0415 #
 MDG IMAGE 8012
 MDG HENRIETTA 9171 #

BW:	84
	205
WT:	781
	365
WT:	1256

CED	BW	WW	YW	MILK	MARB	RE	\$B
+7	+8	+65	+105	+30	I+.32	I+.29	+105.61

First calf heifer.

4 **GOLLAHER IRISH 5017** *BULL*
 Reg: 18284309 • Calved: 01/31/15 • Tattoo: 5017

SIRE: CONNEALY IRISH 0204

S A V BISMARCK 5682 #
 FF DIVIDE X1
 JF EMPRESS U4
DAM: MDG PRIDE DIVIDE 3147
 HARB PENDLETON 765 JH #
 MDG PRIDE 0105 #
 MDG PRIDE 5147

BW:	79
	205
WT:	721
	365
WT:	1233

CED	BW	WW	YW	MILK	MARB	RE	\$B
+7	+1.3	+56	+105	+24	I+.27	I+.33	+102.81

First calf heifer.

5 **GOLLAHER COUNSELOR 5025** *BULL*
 Reg: 18284313 • Calved: 02/02/15 • Tattoo: 5025

SIRE: CONNEALY COUNSELOR

CONNEALY FRONTLINE #	BW: 86
LEACHMAN CASCADE #	205
LEACHMAN BLACKCAP 3053	WT: 748
DAM: MDG BLUEBLOOD 4208 #	365
VERMILION RIGHT TIME H918 #	WT: 1220
M D G BLUEBLOOD 1184 #	
MDG BLUEBLOOD 9138 #	

CED	BW	WW	YW	MILK	MARB	RE	\$B
+6	+1.9	+57	+101	+26	I+.32	I+.63	+121.15

10 WR 107, 8 YR 106.



LOT 8 - 513G

8 **MRG IRISH 513G** *BULL*
 Reg: 18292004 • Calved: 02/15/15 • Tattoo: 513G

SIRE: CONNEALY IRISH 0204

SUMMITCREST HI FLYER 3B18 #	BW: 82
RCC PREFERENCE #	205
W A F J BAND ELBADINA 97	WT: 719
DAM: MRG ERICA PREFERENCE 804G	365
VERMILION 3548 DRIVER 5655	WT: 1244
M R G ERICA 015G #	
M R G ERICA 708G	

CED	BW	WW	YW	MILK	MARB	RE	\$B
+7	+4	+53	+102	+23	I+.47	I+.44	+142.56

6 NR 103, 2 YR 107.



LOT 6 - G505

6 **TLG X FACTOR G505** *BULL*
 Reg: 18284384 • Calved: 02/02/15 • Tattoo: G505

SIRE: BOBCAT X FACTOR X22

SILVEIRAS WAY OUT WEST 3527	BW: 72
SILVEIRAS OUT WEST 7026	205
SILVEIRAS KIND JANIE 5017	WT: 703
DAM: TLG WEST HEIRESS G005 #	365
VERMILION RIGHT TIME H918 #	WT: 1218
TLG HEIRESS G203	
TLG HEIRESS G608	

CED	BW	WW	YW	MILK	MARB	RE	\$B
+13	-1.3	+55	+97	+15	I+.24	I+.41	+92.06

4WR 109, 3 YR 112.



LOT 9 - 5086

7 **GOLLAHER IRISH 5098 [DDC]** *BULL*
 Reg: 18284346 • Calved: 02/15/15 • Tattoo: 5098

SIRE: CONNEALY IRISH 0204

CONNEALY FRONTLINE #	BW: 82
LEACHMAN CASCADE #	205
LEACHMAN BLACKCAP 3053	WT: 737
DAM: MDG BLACKBIRD 5058 #	365
J R ROCKN AMBUSH 178H	WT: 1251
MDG BLACKBIRD 2127	
MDG HENRIETTA 9171	

CED	BW	WW	YW	MILK	MARB	RE	\$B
+6	+1.0	+46	+88	+25	I+.47	I+.60	+132.79

9 WR 106, 7 YR 102.

9 **GOLLAHER IRISH 5086** *BULL*
 Reg: 18284341 • Calved: 02/14/15 • Tattoo: 5086

SIRE: CONNEALY IRISH 0204

BASIN EXT 661L #	BW: 88
MRG EXT 524G	205
MRG ERICA 609G #	WT: 754
DAM: MDG ERICA 7094 #	365
VERMILION RIGHT TIME H918 #	WT: 1268
MDG ERICA 2099	
M D G ERICA 7018	

CED	BW	WW	YW	MILK	MARB	RE	\$B
+5	+1.4	+53	+101	+27	I+.39	I+.60	+144.90

7 NR 109, 5 YR 109.

10 **GOLLAHER GRANITE 5045** *BULL*

Reg: 18284323 • Calved: 02/08/15 • Tattoo: 5045

SIRE: CONNEALY BLACK GRANITE

E7 GURU 286
 MASTER MONSTER 416
 M A BROOK CLEO 16
DAM: MDG ERICA 6054 #
 STEVENSON LAWMAN 199E
 MDG ERICA 8084
 M D G ERICA 2051 #

BW:	86
	205
WT:	713
	365
WT:	1227

CED	BW	WW	YW	MILK	MARB	RE	\$B
+7	+1.0	+56	+100	+28	I+.50	I+.64	+124.71

8 NR 105, 5 YR 110.



LOT 14 - 5005

11 **TLG INCENTIVE G507** *BULL*

Reg: 18284385 • Calved: 02/04/15 • Tattoo: G507

SIRE: CIRCLE A INCENTIVE

H A IMAGE MAKER 0415 #
 RR 0415 IMAGE 5922
 M T CLOVA PRIDE 8346 #
DAM: TLG HEIRESS G926
 VERMILION JP DATELINE L845
 TLG HEIRESS G515
 TLG HEIRESS G604

BW:	82
	205
WT:	696
	365
WT:	1208

CED	BW	WW	YW	MILK	MARB	RE	\$B
+9	+5	+56	+97	+19	I+.61	I+.57	+119.10

5 NR 103, 2 YR 109.

14 **GOLLAHER GRANITE 5005** *BULL*

Reg: 18284306 • Calved: 01/28/15 • Tattoo: 5005

SIRE: CONNEALY BLACK GRANITE

CONNEALY FRONTLINE #
 LEACHMAN CASCADE #
 LEACHMAN BLACKCAP 3053
DAM: MDG ELONEMAR 6006 #
 VERMILION RIGHT TIME H918 #
 MDG ELONEMAR 2028 #
 M D G ELONEMAR 7120 #

BW:	84
	205
WT:	736
	365
WT:	1190

CED	BW	WW	YW	MILK	MARB	RE	\$B
+8	+1.4	+56	+93	+29	I+.32	I+.60	+116.98

8 NR 108, 5 YR 104.

12 **GOLLAHER X FACTOR 5083** *BULL*

Reg: 18284339 • Calved: 02/14/15 • Tattoo: 5083

SIRE: BOBCAT X FACTOR X22

HERO 6267 OF R R 2418 #
 H A IMAGE MAKER 0415 #
 H A RITO BLACKCAP 9038
DAM: MDG BEAUTY 8006
 J R ROCKN AMBUSH 178H
 M D G BEAUTY 1111
 M D G BEAUTY 7066

BW:	88
	205
WT:	716
	365
WT:	1207

CED	BW	WW	YW	MILK	MARB	RE	\$B
+7	+8	+53	+87	+17	I+.21	I+.34	+87.28



LOT 15 - 5035

13 **GOLLAHER IRISH 5127** *BULL*

Reg: 18284354 • Calved: 02/21/15 • Tattoo: 5127

SIRE: CONNEALY IRISH 0204

CONNEALY DANNY BOY #
 VERMILION DANNY BOY R526
 VERMILION PRIZE 0011
DAM: MDG MISS WIX 7168 #
 STEVENSON KINCAID K154
 MDG MISS WIX 4140
 M D G MISS WIX 7040

BW:	82
	205
WT:	719
	365
WT:	1220

CED	BW	WW	YW	MILK	MARB	RE	\$B
+8	+2	+54	+102	+23	I+.41	I+.61	+145.91

7 NR 106, 6 YR 106.

15 **GOLLAHER GRANITE 5035** *BULL*

Reg: 18284319 • Calved: 02/05/15 • Tattoo: 5035

SIRE: CONNEALY BLACK GRANITE

C R A BEXTOR 872 5205 608 #
 TC ABERDEEN 759 #
 TC BLACKBIRD 4034 #
DAM: MDG WIX ABERDEEN 3138
 VERMILION DANNY BOY R526
 MDG MISS WIX 7168 #
 MDG MISS WIX 4140

BW:	80
	205
WT:	740
	365
WT:	1233

CED	BW	WW	YW	MILK	MARB	RE	\$B
+8	+1.2	+61	+107	+30	I+.24	I+.62	+94.59

First calf heifer.

16 GOLLAHER GRANITE 5096*BULL*

Reg: 18284344 • Calved: 02/15/15 • Tattoo: 5096

SIRE: CONNEALY BLACK GRANITE

CONNEALY ONWARD #
 KG ONWARD 5246
 KG BANDOLIERMERE 0318
DAM: MDG CHLOE 8051
 BASIN EXT 661L #
 MDG CHLOE 6068
 MDG CHLOE 4194

<i>BW</i> :	86
<i>WT</i> :	701
<i>WT</i> :	1203

<i>CED</i>	<i>BW</i>	<i>WW</i>	<i>YW</i>	<i>MILK</i>	<i>MARB</i>	<i>RE</i>	<i>\$B</i>
+11	-.1	+55	+96	+27	I+.54	I+.69	+128.70

6 NR 103, 4 YR 102.

**LOT 19 - 505G****LOT 17 - 5011****17 GOLLAHER IRISH 5011***BULL*

Reg: 18284308 • Calved: 01/29/15 • Tattoo: 5011

SIRE: CONNEALY IRISH 0204

SILVEIRAS WAY OUT WEST 3527
 SILVEIRAS OUT WEST 7026
 SILVEIRAS KIND JANIE 5017
DAM: MDG BLACKBIRD WEST 3084
 LEACHMAN HIGH PRIME 3722
 MDG BLACKBIRD 8133
 MDG BLACKBIRD 2149

<i>BW</i> :	80
<i>WT</i> :	743
<i>WT</i> :	1205

<i>CED</i>	<i>BW</i>	<i>WW</i>	<i>YW</i>	<i>MILK</i>	<i>MARB</i>	<i>RE</i>	<i>\$B</i>
+8	+1.0	+55	+97	+21	I+.33	I+.43	+99.67

First calf heifer.

19 MRG GRANITE 505G*BULL*

Reg: 18284330 • Calved: 02/02/15 • Tattoo: 505G

SIRE: CONNEALY BLACK GRANITE

SILVEIRAS WAY OUT WEST 3527
 SILVEIRAS OUT WEST 7026
 SILVEIRAS KIND JANIE 5017
DAM: MRG MISS WEST 322G
 VERMILION RIGHT TIME H918 #
 MRG MISS VICKI 307G
 MRG MISS VICKI 602G

<i>BW</i> :	70
<i>WT</i> :	765
<i>WT</i> :	1170

<i>CED</i>	<i>BW</i>	<i>WW</i>	<i>YW</i>	<i>MILK</i>	<i>MARB</i>	<i>RE</i>	<i>\$B</i>
+12	+.1	+61	+96	+26	I+.33	I+.65	+84.41

First calf heifer.

20 MRG UPWARD 506G*BULL*

Reg: 18284334 • Calved: 02/05/15 • Tattoo: 506G

SIRE: SITZ RLS UPWARD 8971

SUMMITCREST HI FLYER 3B18 #
 RCC PREFERENCE #
 W A F J BAND ELBADINA 97
DAM: MRG MISS PREFERENCE 811G
 VERMILION RIGHT TIME H918 #
 MRG MISS VICKI 307G
 MRG MISS VICKI 602G

<i>BW</i> :	84
<i>WT</i> :	717
<i>WT</i> :	1186

<i>CED</i>	<i>BW</i>	<i>WW</i>	<i>YW</i>	<i>MILK</i>	<i>MARB</i>	<i>RE</i>	<i>\$B</i>
+6	+1.6	+60	+102	+24	I+.35	I+.51	+131.33

6 NR 100, 1 YR 100.

18 TLG UPWARD G504*BULL*

Reg: 18284383 • Calved: 02/02/15 • Tattoo: G504

SIRE: SITZ RLS UPWARD 8971

CONNEALY WRANGLER
 CONNEALY IRISH 0204
 BLACK CREST OF CONANGA 5640 #
DAM: TLG IRISH SENTRY G322
 BASIN EXT 661L #
 TLG SENTRY G523
 TLG SENTRY G607

<i>BW</i> :	76
<i>WT</i> :	718
<i>WT</i> :	1206

<i>CED</i>	<i>BW</i>	<i>WW</i>	<i>YW</i>	<i>MILK</i>	<i>MARB</i>	<i>RE</i>	<i>\$B</i>
+10	-.1	+57	+101	+28	I+.28	I+.25	+95.01

First calf heifer.

21 GOLLAHER X FACTOR 5027*BULL*

Reg: 18284314 • Calved: 02/02/15 • Tattoo: 5027

SIRE: BOBCAT X FACTOR X22

G D A R TRAVELER 561 #
 E7 SUMMIT 42J8
 E7 MARLAMERE 2J8 #
DAM: MDG BEAUTY 7069
 J R ROCKN AMBUSH 178H
 M D G BEAUTY 0113
 M D G BEAUTY 4056

<i>BW</i> :	70
<i>WT</i> :	678
<i>WT</i> :	1168

<i>CED</i>	<i>BW</i>	<i>WW</i>	<i>YW</i>	<i>MILK</i>	<i>MARB</i>	<i>RE</i>	<i>\$B</i>
+11	-1.3	+46	+77	+16	I+.22	I+.52	+87.96

22 **GOLLAHER X FACTOR 5060** *BULL*

Reg: 18284331 • Calved: 02/10/15 • Tattoo: 5060

SIRE: BOBCAT X FACTOR X22

VERMILION DATELINE 7078 #
VERMILION JP DATELINE L845
VERMILION 155 LASS J P 2022 #

DAM: MDG BEAUTY 6113

BASIN EMULATION 178C #
M D G BEAUTY 7066
MDG BEAUTY 5035 #

BW:	80
205	
WT:	656
365	
WT:	1144

CED	BW	WW	YW	MILK	MARB	RE	\$B
+9	-.5	+47	+83	+12	I+.28	I+.34	+101.14

8 NR 96, 3 YR 101.



LOT 25 - 5072



LOT 23 - 5124

23 **GOLLAHER COUNSELOR 5124** *BULL*

Reg: 18284353 • Calved: 02/20/15 • Tattoo: 5124

SIRE: CONNEALY COUNSELOR

VERMILION JUST IN TIME
VERMILION JUST IN TIME T264
VERMILION PRIDE 1446 #

DAM: MDG MISS WIX 9108

VERMILION DANNY BOY R526
MDG MISS WIX 7168 #
MDG MISS WIX 4140

BW:	85
205	
WT:	718
365	
WT:	1182

CED	BW	WW	YW	MILK	MARB	RE	\$B
+8	+8	+55	+98	+28	I+.48	I+.69	+121.16

4 NR 110, 3 YR 106.

26 **TLG UPWARD G528** *BULL*

Reg: 18284389 • Calved: 02/28/15 • Tattoo: G528

SIRE: SITZ RLS UPWARD 8971

CONNEALY FRONT PAGE 0228 #
KESSLERS FRONTMAN R001 #
KESSLERS BELL 0024

DAM: G116 TLG SENTRY FRONTMAN

BASIN EXT 661L #
TLG SENTRY G523
TLG SENTRY G607

BW:	78
205	
WT:	685
365	
WT:	1200

CED	BW	WW	YW	MILK	MARB	RE	\$B
+10	+0	+53	+95	+30	I+.33	I+.37	+104.21

3 NR 103, 2 YR 103.

24 **TLG X FACTOR G509** *BULL*

Reg: 18284387 • Calved: 02/07/15 • Tattoo: G509

SIRE: BOBCAT X FACTOR X22

B C C BUSHWACKER 41-93 #
OX BOW BUSHWACKER 5337
OX BOW EISA EVERGREEN 226 #

DAM: TLG BLACKBIRD G821

F F WESTERN DIVIDEND Y13 #
TLG BLACKBIRD G302
N BAR BLACKBIRD Y3423

BW:	80
205	
WT:	646
365	
WT:	1140

CED	BW	WW	YW	MILK	MARB	RE	\$B
+8	+1	+49	+87	+13	I+.40	I+.42	+107.38

27 **GOLLAHER DIVIDE 5148** *BULL*

Reg: 18284361 • Calved: 02/24/15 • Tattoo: 5148

SIRE: FF DIVIDE X1

CONNEALY FRONTLINE #
LEACHMAN CASCADE #
LEACHMAN BLACKCAP 3053

DAM: MDG CHLOE 4094 #

VERMILION 3548 DRIVER 5655
MDG CHLOE 8091
MDG CHLOE 5115

BW:	86
205	
WT:	729
365	
WT:	1203

CED	BW	WW	YW	MILK	MARB	RE	\$B
+5	+1.2	+47	+84	+25	I+.45	I+.18	+85.87

9 NR 106, 3 YR 105.



LOT 28 - 517G

30 GOLLAHER UPWARD 5158 BULL
 Reg: 18284368 • Calved: 02/27/15 • Tattoo: 5158

SIRE: SITZ RLS UPWARD 8971

HARB PENDLETON 765 JH #
 21AR-PENDELTON 7013A
 21AR BLACKCAP F89B
DAM: 1087 MDG PEND BEAUTY
 LEACHMAN CASCADE #
 MDG BEAUTY 5027
 MDG BEAUTY 8059

BW:	86
205	
WT:	658
365	
WT:	1186

CED	BW	WW	YW	MILK	MARB	RE	\$B
+6	+1.4	+51	+94	+24	I+.48	I+.45	+128.63

3 NR 97, 2 YR 109.

28 MRG DEMPSEY 517G BULL
 Reg: 18284373 • Calved: 02/22/15 • Tattoo: 517G

SIRE: VERMILION DEMPSEY A061

SILVEIRAS WAY OUT WEST 3527
 SILVEIRAS OUT WEST 7026
 SILVEIRAS KIND JANIE 5017
DAM: MRG EMULATION 204G
 VERMILION RIGHT TIME H918 #
 MRG EMULATION 412G
 MRG MISS VICKI 602G

BW:	82
205	
WT:	679
365	
WT:	1197

CED	BW	WW	YW	MILK	MARB	RE	\$B
+8	+1.3	+53	+103	+19	I+.29	I+.42	+102.59

2 NR 106, 2 YR 104.



LOT 31 - G503

31 TLG BEXTOR G503 BULL
 Reg: 18292276 • Calved: 02/02/15 • Tattoo: G503

SIRE: MYTTY BEXTOR 86W

CONNELLY FRONT PAGE 0228 #
 KESSLERS FRONTMAN R001 #
 KESSLERS BELL 0024
DAM: G105 TLG SENTRY FRONTMAN
 LEACHMAN CASCADE #
 TLG SENTRY G411 #
 TLG SENTRY G809

BW:	82
205	
WT:	671
365	
WT:	1161

CED	BW	WW	YW	MILK	MARB	RE	\$B
+6	+1.1	+53	+92	+30	I+.45	I+.28	+46.85



LOT 29 - 5075

29 GOLLAHER UPWARD 5075 BULL
 Reg: 18284338 • Calved: 02/12/15 • Tattoo: 5075

SIRE: SITZ RLS UPWARD 8971

VERMILION JUST IN TIME
 VERMILION JUST IN TIME T264
 VERMILION PRIDE 1446 #
DAM: 1075 MDG JT WIX
 LEACHMAN CASCADE #
 MDG WIX 2056
 MDG MISS WIX 7106

BW:	88
205	
WT:	671
365	
WT:	1167

CED	BW	WW	YW	MILK	MARB	RE	\$B
+5	+1.6	+51	+92	+26	I+.27	I+.37	+94.49

32 GOLLAHER IRISH 5019 BULL
 Reg: 18284310 • Calved: 01/31/15 • Tattoo: 5019

SIRE: CONNELLY IRISH 0204

SITZ ALLIANCE 7544 #
 KG ALLIANCE 0168
 KG JUDITH 8145
DAM: MDG WIX ALLIANCE 3194
 VERMILION DANNY BOY R526
 MDG MISS WIX 0116
 MDG MISS WIX 4008

BW:	78
205	
WT:	699
365	
WT:	1153

CED	BW	WW	YW	MILK	MARB	RE	\$B
+8	+1.4	+54	+99	+25	I+.32	I+.45	+91.08

First calf heifer.

33 **GOLLAHER UPWARD 5030** *BULL*
 Reg: 18284316 • Calved: 02/03/15 • Tattoo: 5030

SIRE: SITZ RLS UPWARD 8971

LEACHMAN RIGHT TIME #	BW: 84
VERMILION RIGHT TIME H918 #	205
VERMILION ROSELLA 6081	WT: 676
DAM: MDG SENTRESS 3152	365
BASIN EMULATION 178C #	WT: 1177
GOLLAHER SENTRESS 6004 #	
M D G SENTRESS 8055 #	

CED	BW	WW	YW	MILK	MARB	RE	\$B
+4	+2.3	+62	+104	+21	I+.18	I+.40	+116.94

10 NR 106, 6 YR 110.



LOT 37 - 5039

34 **GOLLAHER COUNSELOR 5047** *BULL*
 Reg: 18284324 • Calved: 02/08/15 • Tattoo: 5047

SIRE: CONNEALY COUNSELOR

VERMILION DATELINE 7078 #	BW: 74
VERMILION JP DATELINE L845	205
VERMILION 155 LASS J P 2022 #	WT: 709
DAM: MDG PRIDE 7116	365
J R ROCKN AMBUSH 178H	WT: 1171
M D G PRIDE 0100	
MDG PRIDE 6066 #	

CED	BW	WW	YW	MILK	MARB	RE	\$B
I+5	I+1.4	I+50	I+90	I+21	I+.41	I+.73	+106.18

6 NR 99, 3 YR 100.

37 **GOLLAHER UPWARD 5039** *BULL*
 Reg: 18284320 • Calved: 02/06/15 • Tattoo: 5039

SIRE: SITZ RLS UPWARD 8971

GREENBRAE CHAIRMAN #	BW: 72
PREMIER CHAIRMAN 6011A #	205
J K QUEEN 141	WT: 684
DAM: MDG PRIDE 5092	365
F F WESTERN DIVIDEND Y13 #	WT: 1140
M D G PRIDE 0034	
M D G PRIDE 8090	

CED	BW	WW	YW	MILK	MARB	RE	\$B
+11	-1.1	+49	+81	+24	I+.37	I+.52	+107.42

35 **GOLLAHER BEXTOR 5058** *BULL*
 Reg: 18284329 • Calved: 02/10/15 • Tattoo: 5058

SIRE: MYTTY BEXTOR 86W

CONNEALY ONWARD #	BW: 66
KG ONWARD 5246	205
KG BANDOLIERMERE 0318	WT: 675
DAM: MDG ELONEMAR 9113	365
PREMIER CHAIRMAN 6011A #	WT: 1158
MDG ELONEMAR 4007	
MDG ELONEMAR 2028 #	

CED	BW	WW	YW	MILK	MARB	RE	\$B
I+7	I+.8	I+54	I+92	I+26	I+.32	I+.15	+42.80

3 NR 109, 2 YR 102.

38 **GOLLAHER LOMBARDI 5062** *BULL*
 Reg: 18284332 • Calved: 02/10/15 • Tattoo: 5062

SIRE: WOODHILL LOMBARDI

SITZ TRAVELER 8180 #	BW: 85
S A V FINAL ANSWER 0035 #	205
S A V EMULOUS 8145	WT: 711
DAM: MDG PRIDE 9068	365
VERMILION RIGHT TIME H918 #	WT: 1140
MDG PRIDE 5147	
M D G PRIDE 7056	

CED	BW	WW	YW	MILK	MARB	RE	\$B
+7	+1.1	+56	+92	+25	I+.50	I+.63	+91.31

5 NR 104, 3 YR 100.

36 **TLG FOCAL PT G530** *BULL*
 Reg: 18284390 • Calved: 03/07/15 • Tattoo: G530

SIRE: KG FOCAL POINT 1143

CONNEALY FRONT PAGE 0228 #	BW: 86
KESSLERS FRONTMAN R001 #	205
KESSLERS BELL 0024	WT: 719
DAM: G118 TLG SENTRY FRONTMAN #	365
KG ONWARD 5246	WT: 1202
TLG SENTRY G918 #	
TLG SENTRY G523	

CED	BW	WW	YW	MILK	MARB	RE	\$B
+7	+1.2	+50	+90	+28	I+.34	I+.65	+101.40

39 **MRG COUNSELOR 502G** *BULL*
 Reg: 18284315 • Calved: 01/27/15 • Tattoo: 502G

SIRE: CONNEALY COUNSELOR

CONNEALY WRANGLER	BW: 72
CONNEALY IRISH 0204	205
BLACK CREST OF CONANGA 5640 #	WT: 676
DAM: MDG IRISH QUEEN 301G	365
VERMILION RIGHT TIME H918 #	WT: 1169
MRG QUEEN MOTHER 303G	
MRG QUEEN MOTHER 611G #	

CED	BW	WW	YW	MILK	MARB	RE	\$B
+12	-.7	+54	+99	+21	I+.35	I+.65	+78.50

First calf heifer.



LOT 40 - 5105

42 GOLLAHER X FACTOR 5113 BULL

Reg: 18284352 • Calved: 02/18/15 • Tattoo: 5113

SIRE: BOBCAT X FACTOR X22

VERMILION JUST IN TIME
 VERMILION JUST IN TIME T264
 VERMILION PRIDE 1446 #
DAM: 1054 MDG LASS
 PREMIER CHAIRMAN 6011A #
 MDG LASS 3129
 MDG LASS 5114

BW:	90
205	
WT:	632
365	
WT:	1123

CED	BW	WW	YW	MILK	MARB	RE	\$B
+3	+2.3	+44	+81	+18	I+.31	I+.40	+92.27

3 NR 104, 1 YR 116.

40 GOLLAHER IRISH 5105 BULL

Reg: 18284347 • Calved: 02/17/15 • Tattoo: 5105

SIRE: CONNEALY IRISH 0204

CONNEALY DANNY BOY #
 VERMILION DANNY BOY R526
 VERMILION PRIZE 0011
DAM: MDG ESPA 8108
 F F KANSAS 1
 MDG ESPA 9066
 MDG ESPA 6110

BW:	82
205	
WT:	680
365	
WT:	1134

CED	BW	WW	YW	MILK	MARB	RE	\$B
+8	+2	+48	+92	+21	I+.52	I+.54	+130.04

6 NR 103, 4 YR 105 .

43 GOLLAHER UPWARD 5109 BULL

Reg: 18284349 • Calved: 02/17/15 • Tattoo: 5109

SIRE: SITZ RLS UPWARD 8971

SUMMITCREST HIGH PRIME 0H29 #
 LEACHMAN HIGH PRIME 3722
 LEACHMAN BLACKCAP 6260
DAM: MDG PRIME PRIDE 6211
 VERMILION RIGHT TIME H918 #
 M D G PRIDE 1119
 MDG PRIDE 8006

BW:	84
205	
WT:	689
365	
WT:	1126

CED	BW	WW	YW	MILK	MARB	RE	\$B
+5	+1.5	+57	+90	+22	I+.52	I+.30	+107.94

4 NR 101, 2 YR 100.



LOT 41 - 5085

44 GOLLAHER COUNSELOR 5135 BULL

Reg: 18284359 • Calved: 02/22/15 • Tattoo: 5135

SIRE: CONNEALY COUNSELOR

VERMILION JUST IN TIME
 VERMILION JUST IN TIME T264
 VERMILION PRIDE 1446 #
DAM: MDG CHLOE 9062
 STEVENSON BRUNO 561G #
 M D G CHLOE 0004
 MDG CHLOE 6162

BW:	90
205	
WT:	690
365	
WT:	1154

CED	BW	WW	YW	MILK	MARB	RE	\$B
+5	+2.3	+50	+92	+23	I+.45	I+.66	+108.37

1 NR 101.

41 GOLLAHER BEXTOR 5085 BULL

Reg: 18284340 • Calved: 02/14/15 • Tattoo: 5085

SIRE: MYTTY BEXTOR 86W

SUMMITCREST HIGH PRIME 0H29 #
 LEACHMAN HIGH PRIME 3722
 LEACHMAN BLACKCAP 6260
DAM: MDG ERICA 7109
 VERMILION RIGHT TIME H918 #
 M D G ERICA 1082
 MDG ERICA 5063

BW:	83
205	
WT:	634
365	
WT:	1106

CED	BW	WW	YW	MILK	MARB	RE	\$B
+6	+1.0	+52	+90	+22	I+.48	I+.31	+58.20

45 MRG IRISH 504G BULL

Reg: 18284325 • Calved: 01/30/15 • Tattoo: 504G

SIRE: CONNEALY IRISH 0204

HARB PENDLETON 765JH #
 21AR-PENDELTON 7013A
 21AR BLACKCAP F89B
DAM: MRG MISS VICKI 918G
 VERMILION RIGHT TIME H918 #
 MRG MISS VICKI 307G
 MRG MISS VICKI 602G

BW:	86
205	
WT:	612
365	
WT:	1068

CED	BW	WW	YW	MILK	MARB	RE	\$B
+6	+1.4	+46	+88	+16	I+.34	I+.26	+83.38

46 **GOLLAHER GRANITE 5022** *BULL*

Reg: 18284312 • Calved: 02/01/15 • Tattoo: 5022

SIRE: CONNEALY BLACK GRANITE

HARB PENDLETON 765 J H #
21AR-PENDELTON 7013A
21AR BLACKCAP F89B

DAM: MDG ERICA PEND 3031

VERMILION JP DATELINE L845
MDG ERICA 7015
MDG ERICA 5075

BW:	80
205	
WT:	683
365	
WT:	1120

CED	BW	WW	YW	MILK	MARB	RE	\$B
+7	+1.6	+54	+94	+23	I+.14	I+.54	+68.22

First calf heifer.



LOT 50 - G517

47 **GOLLAHER GRANITE 5032** *BULL*

Reg: 18284317 • Calved: 02/04/15 • Tattoo: 5032

SIRE: CONNEALY BLACK GRANITE

CONNEALY WRANGLER
CONNEALY IRISH 0204
BLACK CREST OF CONANGA 5640 #

DAM: MDG IRISH PIONEER 3093

KG ONWARD 5246
MDG MS PIONEER 9111
VERMILION MS PIONEER 2318

BW:	80
205	
WT:	683
365	
WT:	1158

CED	BW	WW	YW	MILK	MARB	RE	\$B
+10	+5	+54	+99	+25	I+.44	I+.59	+87.48

First calf heifer.

50 **TLG UPWARD G517** *BULL*

Reg: 18284388 • Calved: 02/14/15 • Tattoo: G517

SIRE: SITZ RLS UPWARD 8971

C R A BEXTOR 872 5205 608 #
MYTTY BEXTOR 86W
MYTTY PRIDE 32S #

DAM: TLG HEIRESS G214

LEACHMAN HIGH PRIME 3722
TLG HEIRESS G618 #
TLG HEIRESS G409

BW:	86
205	
WT:	720
365	
WT:	1139

CED	BW	WW	YW	MILK	MARB	RE	\$B
+6	+1.4	+60	+97	+30	I+.30	I+.30	+89.54

2 NR 108, 1 YR 100.

48 **TLG UPWARD G508** *BULL*

Reg: 18284386 • Calved: 02/06/15 • Tattoo: G508

SIRE: SITZ RLS UPWARD 8971

BROOKS EXT 792 #
BASIN EXT 661L #
BASIN CAMILLA 472F #

DAM: TLG SENTRY G523

BASIN EMULATION 178C #
TLG SENTRY G607
M D G PINE SENTRY 7062

BW:	84
205	
WT:	665
365	
WT:	1105

CED	BW	WW	YW	MILK	MARB	RE	\$B
+6	+1.5	+50	+85	+30	I+.33	I+.40	+102.12

9 NR 102, 7 YR 102.

51 **GOLLAHER FOCAL PT 5154** *BULL*

Reg: 18284367 • Calved: 02/26/15 • Tattoo: 5154

SIRE: KG FOCAL POINT 1143

HARB PENDLETON 765 J H #
21AR-PENDELTON 7013A
21AR BLACKCAP F89B

DAM: 1182 MDG CHLOE PEND

KG ONWARD 5246
MDG CHLOE 8051
MDG CHLOE 6068

BW:	66
205	
WT:	696
365	
WT:	1200

CED	BW	WW	YW	MILK	MARB	RE	\$B
I+10	I-0.5	I+47	I+87	+22	I+.25	I+.41	+77.08

49 **GOLLAHER UPWARD 5020** *BULL*

Reg: 18284311 • Calved: 02/01/15 • Tattoo: 5020

SIRE: SITZ RLS UPWARD 8971

S S OBJECTIVE T510 0T26 #
CIRCLE A INCENTIVE
CIRCLE A BEAUTY 5566 #

DAM: MDG CHLOE INCENTIVE 3108

VERMILION RIGHT TIME H918 #
MDG CHLOE 4194
MDG CHLOE 6064

BW:	80
205	
WT:	724
365	
WT:	1153

CED	BW	WW	YW	MILK	MARB	RE	\$B
+8	+7	+62	+101	+24	I+.43	I+.21	+91.57

First calf heifer.

52 **GOLLAHER FOCAL PT 5171** *BULL*

Reg: 18284370 • Calved: 03/04/15 • Tattoo: 5171

SIRE: KG FOCAL POINT 1143

HARB PENDLETON 765 J H #
21AR-PENDELTON 7013A
21AR BLACKCAP F89B

DAM: MDG MISS WIX 2147

VERMILION JUST IN TIME T264
MDG MISS WIX 9108
MDG MISS WIX 7168

BW:	84
205	
WT:	656
365	
WT:	1200

CED	BW	WW	YW	MILK	MARB	RE	\$B
+6	+1.0	+48	+95	+23	I+.37	I+.29	+79.95

53 **GOLLAHER COUNSELOR 5110** *BULL*
 Reg: 18284350 • Calved: 02/17/15 • Tattoo: 5110

SIRE: CONNEALY COUNSELOR

S A V FINAL ANSWER 0035 #	BW: 74
HARB PENDLETON 765 J H #	205
H A R B BLACK LADY 375 J H #	WT: 701
DAM: MDG ERICA 0042	365
E7 SUMMIT 42J8	WT: 1111
MDG ERICA 8095 #	
MDG ERICA 3052	

CED	BW	WW	YW	MILK	MARB	RE	\$B
+11	+0	+57	+95	+25	I+.43	I+.88	+115.48

4 NR 99, 2 YR 103.

57 **GOLLAHER GRANITE 5095** *BULL*
 Reg: 18284343 • Calved: 02/15/15 • Tattoo: 5095

SIRE: CONNEALY BLACK GRANITE

SILVEIRAS WAY OUT WEST 3527	BW: 86
SILVEIRAS OUT WEST 7026	205
SILVEIRAS KIND JANIE 5017	WT: 676
DAM: MDG WEST PRIDE 0077 #	365
BASIN EXT 661L #	WT: 1084
MDG PRIDE 4102 #	
M D G PRIDE 4031	

CED	BW	WW	YW	MILK	MARB	RE	\$B
+10	+1.0	+49	+82	+31	I+.45	I+.74	+102.76

4 NR 108, 2 YR 103.

54 **GOLLAHER FOCAL PT 5128** *BULL*
 Reg: 18284355 • Calved: 02/21/15 • Tattoo: 5128

SIRE: KG FOCAL POINT 1143

VERMILION JUST IN TIME	BW: 74
VERMILION JUST IN TIME T264	205
VERMILION PRIDE 1446 #	WT: 691
DAM: MDG EMPRESS 2150	365
J R ROCKN AMBUSH 178H	WT: 1126
MDG EMPRESS 2068 #	
MDG EMPRESS 9141	

CED	BW	WW	YW	MILK	MARB	RE	\$B
+8	+3	+48	+85	+25	I+.52	I+.16	+82.00

2 NR 103, 1 YR 102.

58 **GOLLAHER GRANITE 5138** *BULL*
 Reg: 18284360 • Calved: 02/22/15 • Tattoo: 5138

SIRE: CONNEALY BLACK GRANITE

TC STOCKMAN 365 #	BW: 84
G 13 STRUCTURE #	205
G 13 TRAVELER 9428 #	WT: 649
DAM: MDG STRUCTURE 7098	365
MDG 7068 OF CHAIRMAN	WT: 1091
MDG HENRIETTA 9171 #	
M D G HENRIETTA 7083	

CED	BW	WW	YW	MILK	MARB	RE	\$B
+6	+1.9	+46	+77	+26	I+.40	I+.89	+105.30

55 **GOLLAHER FOCAL PT 5198** *BULL*
 Reg: 18284376 • Calved: 03/17/15 • Tattoo: 5198

SIRE: KG FOCAL POINT 1143

S A V FINAL ANSWER 0035 #	BW: 84
HARB PENDLETON 765 J H #	205
H A R B BLACK LADY 375 J H #	WT: 703
DAM: MDG ELONEMAR 9103	365
VERMILION RIGHT TIME H918 #	WT: 1173
MDG ELONEMAR 2028 #	
M D G ELONEMAR 7120	

CED	BW	WW	YW	MILK	MARB	RE	\$B
+6	+1.2	+57	+99	+23	I+.35	I+.33	+112.83

5 NR 101, 2 YR 102.

59 **GOLLAHER X FACTOR 5111** *BULL*
 Reg: 18284351 • Calved: 02/17/15 • Tattoo: 5111

SIRE: BOBCAT X FACTOR X22

S A F FOCUS OF E R #	BW: 86
MYTTY IN FOCUS #	205
MYTTY COUNTESS 906	WT: 673
DAM: MDG CHLOE OF FOCUS 8067	365
VERMILION RIGHT TIME H918 #	WT: 1108
MDG CHLOE 2152	
MDG CHLOE 9130	

CED	BW	WW	YW	MILK	MARB	RE	\$B
+6	+1.6	+54	+92	+14	I+.29	I+.36	+94.42

4 NR 100, 3 YR 103.

56 **GOLLAHER IRISH 5097** *BULL*
 Reg: 18284345 • Calved: 02/15/15 • Tattoo: 5097

SIRE: CONNEALY IRISH 0204

C R A BEXTOR 872 5205 608 #	BW: 76
MYTTY BEXTOR 86W	205
MYTTY PRIDE 32S #	WT: 702
DAM: MDG CHLOE BEXTOR 3033	365
BASIN EXT 661L #	WT: 1153
MDG CHLOE 4013	
MDG CHLOE 5101	

CED	BW	WW	YW	MILK	MARB	RE	\$B
+9	+1	+51	+90	+27	I+.30	I+.33	+89.24

First calf heifer.

60 **GOLLAHER X FACTOR 5149** *BULL*
 Reg: 18284362 • Calved: 02/24/15 • Tattoo: 5149

SIRE: BOBCAT X FACTOR X22

BROOKS EXT 792 #	BW: 80
BASIN EXT 661L #	205
BASIN CAMILLA 472F #	WT: 667
DAM: MDG WIX 6090 #	365
VERMILION RIGHT TIME H918 #	WT: 1094
MDG MISS WIX 4008	
M D G MISS WIX 7065	

CED	BW	WW	YW	MILK	MARB	RE	\$B
+10	-.6	+44	+70	+22	I+.18	I+.61	+84.23

8 NR 107, 5 YR 101.

61 **GOLLAHER X FACTOR 5134** *BULL*
 Reg: 18284358 • Calved: 02/22/15 • Tattoo: 5134

SIRE: BOBCAT X FACTOR X22

CONNEALY ONWARD #	BW: 84
KG ONWARD 5246	205
KG BANDOLIERMERE 0318	WT: 692
DAM: MDG ERICA 9135	365
BASIN EMULATION 178C #	WT: 1103
M D G ERICA 1070	
MDG ERICA 5015	

CED	BW	WW	YW	MILK	MARB	RE	\$B
+7	+3	+50	+82	+13	I+.14	I+.41	+64.75

65 **GOLLAHER COUNSELOR 5033** *BULL*
 Reg: 18284318 • Calved: 02/04/15 • Tattoo: 5033

SIRE: CONNEALY COUNSELOR

TC STOCKMAN 365 #	BW: 88
G 13 STRUCTURE #	205
G 13 TRAVELER 9428 #	WT: 670
DAM: MDG BLUEBLOOD 6058	365
F F KANSAS 1	WT: 1052
M D G BLUEBLOOD 1128	
MDG BLUEBLOOD 6042 #	

CED	BW	WW	YW	MILK	MARB	RE	\$B
+6	+1.9	+46	+77	+22	I+.43	I+.72	+96.83

62 **GOLLAHER COUNSELOR 5070** *BULL*
 Reg: 18284335 • Calved: 02/11/15 • Tattoo: 5070

SIRE: CONNEALY COUNSELOR

CONNEALY WRANGLER	BW: 80
CONNEALY IRISH 0204	205
BLACK CREST OF CONANGA 5640 #	WT: 721
DAM: MDG PENDLETON IRISH 3012	365
21AR-PENDELTON 7013A	WT: 1129
1020 MDG PENDLETON	
MDG SHOSHONE 5192	

CED	BW	WW	YW	MILK	MARB	RE	\$B
+9	+7	+57	+97	+24	I+.29	I+.56	+69.66

First calf heifer.

66 **GOLLAHER IRISH 5068** *BULL*
 Reg: 18284333 • Calved: 02/11/15 • Tattoo: 5068

SIRE: CONNEALY IRISH 0204

CONNEALY WRANGLER	BW: 80
CONNEALY IRISH 0204	205
BLACK CREST OF CONANGA 5640 #	WT: 652
DAM: MDG SENTRESS IRISH 3023	365
VERMILION RIGHT TIME H918 #	WT: 1110
MDG SENTRESS 3152	
GOLLAHER SENTRESS 6004 #	

CED	BW	WW	YW	MILK	MARB	RE	\$B
+7	+1.4	+52	+100	+19	I+.23	I+.32	+81.55

First calf heifer.

63 **GOLLAHER COUNSELOR 5133** *BULL*
 Reg: 18284357 • Calved: 02/22/15 • Tattoo: 5133

SIRE: CONNEALY COUNSELOR

CONNEALY ONWARD #	BW: 86
KG ONWARD 5246	205
KG BANDOLIERMERE 0318	WT: 677
DAM: 1014 MDG BEAUTY	365
LEACHMAN CASCADE #	WT: 1112
MDG BEAUTY 6031	
MDG BEAUTY 8059	

CED	BW	WW	YW	MILK	MARB	RE	\$B
+8	+1.0	+53	+93	+21	I+.25	I+.60	+72.70

67 **GOLLAHER UPWARD 5175** *BULL*
 Reg: 18284371 • Calved: 03/06/15 • Tattoo: 5175

SIRE: SITZ RLS UPWARD 8971

SILVEIRAS WAY OUT WEST 3527	BW: 76
SILVEIRAS OUT WEST 7026	205
SILVEIRAS KIND JANIE 5017	WT: 665
DAM: MDG ERICA 0064	365
BASIN EXT 661L #	WT: 1132
MDG ERICA 5123 #	
MDG ERICA 2178	

CED	BW	WW	YW	MILK	MARB	RE	\$B
+13	-.6	+53	+95	+25	I+.39	I+.31	+97.19

64 **GOLLAHER COUNSELOR 5108** *BULL*
 Reg: 18284348 • Calved: 02/17/15 • Tattoo: 5108

SIRE: CONNEALY COUNSELOR

VERMILION DATELINE 7078 #	BW: 84
VERMILION JP DATELINE L845	205
VERMILION 155 LASS J P 2022 #	WT: 657
DAM: MDG ELINE DRICA 7081	365
BASIN EMULATION 178C #	WT: 1075
MDG ELINE ERICA 9051	
MDG ELINE ERICA 7169	

CED	BW	WW	YW	MILK	MARB	RE	\$B
+8	+6	+49	+86	+21	I+.36	I+.45	+89.81

7 NR 100, 5 YR 103.

68 **GOLLAHER UPWARD 5089** *BULL*
 Reg: 18284342 • Calved: 02/14/15 • Tattoo: 5089

SIRE: SITZ RLS UPWARD 8971

VERMILION DATELINE 7078 #	BW: 84
VERMILION JP DATELINE L845	205
VERMILION 155 LASS J P 2022 #	WT: 697
DAM: MDG MISS WIX 4184	365
BASIN EMULATION 178C #	WT: 1092
M D G MISS WIX 7152 #	
M D G MISS WIX 1011	

CED	BW	WW	YW	MILK	MARB	RE	\$B
+7	+6	+53	+85	+22	I+.35	I+.52	+103.78

69 **GOLLAHER ALLIANCE 5153** *BULL*

Reg: 18284366 • Calved: 02/26/15 • Tattoo: 5153

SIRE: KG ALLIANCE 0168

CONNEALY ONWARD #	BW: 70
KG ONWARD 5246	205
KG BANDOLIERMERE 0318	WT: 663
DAM: 1140 MDG BEAUTY ONWARD	365
E7 SUMMIT 42J8	WT: 1105
MDG BEAUTY 7069	
M D G BEAUTY 0113	

CED	BW	WW	YW	MILK	MARB	RE	\$B
+10	-1.0	+48	+86	+25	I+.30	I+.06	+63.32

73 **MRG ABERDEEN 519G** *BULL*

Reg: 18284377 • Calved: 02/27/15 • Tattoo: 519G

SIRE: TC ABERDEEN 759

S A V FINAL ANSWER 0035 #	BW: 84
HARB PENDLETON 765 J H #	205
H A R B BLACK LADY 375 J H #	WT: 611
DAM: MRG PRIDE P 908G	365
VERMILION RIGHT TIME H918 #	WT: 1072
MRG PRIDE 309G	
MRG PRIDE 506G	

CED	BW	WW	YW	MILK	MARB	RE	\$B
+5	+2.0	+48	+86	+24	I+.41	I+.70	+101.15

70 **GOLLAHER DEMPSEY 5160** *BULL*

Reg: 18284369 • Calved: 02/28/15 • Tattoo: 5160

SIRE: VERMILION DEMPSEY A061

SILVEIRAS WAY OUT WEST 3527	BW: 78
SILVEIRAS OUT WEST 7026	205
SILVEIRAS KIND JANIE 5017	WT: 653
DAM: MDG MISS WEST 3048	365
E7 SUMMIT 42J8	WT: 1152
MDG MISS WIX 8033	
MDG MISS WIX 4203	

CED	BW	WW	YW	MILK	MARB	RE	\$B
+10	+5	+49	+96	+19	I+.28	I+.47	+89.72

First calf heifer.

74 **GOLLAHER ALLIANCE 5209** *BULL*

Reg: 18284381 • Calved: 03/31/15 • Tattoo: 5209

SIRE: KG ALLIANCE 0168

G A R GRID MAKER #	BW: 88
S A V BISMARCK 5682 #	205
S A V ABIGALE 0451	WT: 798
DAM: MDG LASS 2013	365
HARB PENDLETON 765 J H #	WT: 1240
MDG LASS 0136	
MDG LASS 4180	

CED	BW	WW	YW	MILK	MARB	RE	\$B
+7	+1.3	+61	+104	+35	I+.50	I+.52	+123.35

2 NR 121, 1 YR 120.

71 **GOLLAHER WINDY 5205** *BULL*

Reg: 18284380 • Calved: 03/24/15 • Tattoo: 5205

SIRE: MYTTY WINDY 758 12X

SILVEIRAS WAY OUT WEST 3527	BW: 86
SILVEIRAS OUT WEST 7026	205
SILVEIRAS KIND JANIE 5017	WT: 700
DAM: 1065 MDG WEST CHLOE	365
21AR-PENDELTON 7013A	WT: 1178
MDG CHLOE 9112	
MDG CHLOE 3075	

CED	BW	WW	YW	MILK	MARB	RE	\$B
+10	+8	+43	+86	+21	I+.71	I+.60	+112.97

3 NR 103, 2 YR 105.

75 **MRG X FACTOR 514G** *BULL*

Reg: 18284363 • Calved: 02/15/15 • Tattoo: 514G

SIRE: BOBCAT X FACTOR X22

LEACHMAN RIGHT TIME #	BW: 76
VERMILION RIGHT TIME H918 #	205
VERMILION ROSELLA 6081	WT: 643
DAM: MRG QUEEN MOTHER 606G	365
HYLINE S V F SEVEN ELEVEN 7C	WT: 1069
MRG QUEEN MOTHER 611G #	
N BAR QUEEN MOTHER X3853	

CED	BW	WW	YW	MILK	MARB	RE	\$B
+8	+4	+48	+76	+11	I+.20	I+.28	+77.60

8 NR 99, 2 YR 101.

72 **GOLLAHER WINDY 5187** *BULL*

Reg: 18284374 • Calved: 03/12/15 • Tattoo: 5187

SIRE: MYTTY WINDY 758 12X

CONNEALY FRONTLINE #	BW: 82
LEACHMAN CASCADE #	205
LEACHMAN BLACKCAP 3053	WT: 670
DAM: MDG BEAUTY 6031	365
VERMILION 3548 DRIVER 5655	WT: 1118
MDG BEAUTY 8059	
M D G BEAUTY 2106	

CED	BW	WW	YW	MILK	MARB	RE	\$B
+10	-.2	+36	+73	+22	I+.41	I+.35	+67.82

6 NR 102, 4 YR 102.

76 **MRG X FACTOR 524G** *BULL*

Reg: 18284382 • Calved: 03/18/15 • Tattoo: 524G

SIRE: BOBCAT X FACTOR X22

SILVEIRAS WAY OUT WEST 3527	BW: 68
SILVEIRAS OUT WEST 7026	205
SILVEIRAS KIND JANIE 5017	WT: 668
DAM: 108G MRG ERICA WEST	365
VERMILION 3548 DRIVER 5655	WT: 1111
M R G ERICA 015G #	
M R G ERICA 708G	

CED	BW	WW	YW	MILK	MARB	RE	\$B
+14	-2.3	+47	+80	+17	I+.25	I+.32	+68.37

2 NR 100, 1 YR 99.

77 **GOLLAHER X FACTOR 5202** *BULL*
 Reg: 18284379 • Calved: 03/21/15 • Tattoo: 5202

SIRE: BOBCAT X FACTOR X22

B C C BUSHWACKER 41-93 #								BW: 76
OX BOW BUSHWACKER 5337								205
OX BOW EISA EVERGREEN 226 #								WT: 689
DAM: MDG CHLOE 0127								
F F WESTERN DIVIDEND Y13 #								365
M D G CHLOE 1106								WT: 1126
MDG CHLOE 9109								

CED	BW	WW	YW	MILK	MARB	RE	\$B
+11	-1.1	+54	+88	+15	I+.17	I+.37	+68.24

81 **GOLLAHER ALLIANCE 5191** *BULL*
 Reg: 18284375 • Calved: 03/13/15 • Tattoo: 5191

SIRE: KG ALLIANCE 0168

SILVEIRAS WAY OUT WEST 3527								BW: 72
SILVEIRAS OUT WEST 7026								205
SILVEIRAS KIND JANIE 5017								WT: 718
DAM: 1022 MDG WEST PRIDE #								
VERMILION RIGHT TIME H918 #								365
MDG PRIDE 2138 #								WT: 1132
MDG PRIDE 8006								

CED	BW	WW	YW	MILK	MARB	RE	\$B
+12	-1.2	+55	+93	+28	I+.66	I+.21	+102.28

3 NR 107, 2 YR 104.

78 **GOLLAHER COUNSELOR 5044** *BULL*
 Reg: 18284322 • Calved: 02/08/15 • Tattoo: 5044

SIRE: CONNEALY COUNSELOR

S A V FINAL ANSWER 0035 #								BW: 86
HARB PENDELTON 765 J H #								205
H A R B BLACK LADY 375 J H #								WT: 673
DAM: MDG RIVERMAID 0083								
F F WESTERN DIVIDEND Y13 #								365
MDG RIVERMAID 9053								WT: 1070
M D G RIVERMAID 7060								

CED	BW	WW	YW	MILK	MARB	RE	\$B
+8	+1.3	+52	+89	+24	I+.22	I+.58	+64.03

4 NR 101, 2 YR 108.

82 **GOLLAHER X FACTOR 5152 [DDC]** *BULL*
 Reg: 18284365 • Calved: 02/26/15 • Tattoo: 5152

SIRE: BOBCAT X FACTOR X22

HARB PENDELTON 765 J H #								BW: 76
21AR-PENDELTON 7013A								205
21AR BLACKCAP F89B								WT: 647
DAM: MDG CHLOE 9004								
LEACHMAN CASCADE #								365
MDG CHLOE 4062								WT: 1036
MDG CHLOE 2119								

CED	BW	WW	YW	MILK	MARB	RE	\$B
+11	-1.2	+43	+71	+17	I+.43	I+.25	+78.14

5 NR 102, 2 YR 102.

79 **GOLLAHER COUNSELOR 5071** *BULL*
 Reg: 18284336 • Calved: 02/12/15 • Tattoo: 5071

SIRE: CONNEALY COUNSELOR

HARB PENDELTON 765 J H #								BW: 76
21AR-PENDELTON 7013A								205
21AR BLACKCAP F89B								WT: 661
DAM: MDG ERICA 0124								
PREMIER CHAIRMAN 6011A #								365
MDG ERICA 5075								WT: 981
MDG ERICA 3181 #								

CED	BW	WW	YW	MILK	MARB	RE	\$B
+10	+0	+50	+80	+22	I+.30	I+.58	+69.65

4 NR 99, 2 YR 98.

83 **GOLLAHER X FACTOR 5132** *BULL*
 Reg: 18284356 • Calved: 02/21/15 • Tattoo: 5132

SIRE: BOBCAT X FACTOR X22

S A V FINAL ANSWER 0035 #								BW: 84
HARB PENDELTON 765 J H #								205
H A R B BLACK LADY 375 J H #								WT: 639
DAM: MDG ERICA 0131								
BASIN EXT 661L #								365
MDG ERICA 4068 #								WT: 1074
MDG ERICA 2144								

CED	BW	WW	YW	MILK	MARB	RE	\$B
+9	+5	+48	+83	+17	I+.16	I+.32	+62.69

80 **GOLLAHER WINDY 5177** *BULL*
 Reg: 18284372 • Calved: 03/09/15 • Tattoo: 5177

SIRE: MYTTY WINDY 758 12X

HARB PENDELTON 765 J H #								BW: 78
21AR-PENDELTON 7013A								205
21AR BLACKCAP F89B								WT: 668
DAM: 1109 MDG PEND PRIDE								
E7 SUMMIT 42J8								365
MDG PRIDE 7027 #								WT: 1111
MDG PRIDE 5162								

CED	BW	WW	YW	MILK	MARB	RE	\$B
+11	-.5	+37	+74	+21	I+.49	I+.29	+81.19

2 NR 103, 1 YR 103.

84 **GOLLAHER DIVIDE 5200** *BULL*
 Reg: 18284378 • Calved: 03/19/15 • Tattoo: 5200

SIRE: FF DIVIDE X1

LEACHMAN RIGHT TIME #								BW: 80
VERMILION RIGHT TIME H918 #								205
VERMILION ROSELLA 6081								WT: 726
DAM: MDG CHLOE 4194								
HYLINE S V F SEVEN ELEVEN 7C								365
MDG CHLOE 6064								WT: 1148
M D G CHLOE 5159								

CED	BW	WW	YW	MILK	MARB	RE	\$B
+7	+4	+56	+88	+21	I+.21	I+.36	+79.26

10 NR 104, 9 YR 104.

American Angus Association® Selection Tools

Expected Progeny Difference (EPD), is the prediction of how future progeny of each animal are expected to perform relative to the progeny of other animals listed in the database. EPDs are expressed in units of measure for the trait, plus or minus. Interim EPDs may appear on young animals when their performance has yet to be incorporated into the American Angus Association National Cattle Evaluation (NCE) procedures. This EPD will be preceded by an “I”, and may or may not include the animal’s own performance record for a particular trait, depending on its availability, appropriate contemporary grouping, or data edits needed for NCE.

Accuracy (ACC), is the reliability that can be placed on the EPD. An accuracy of close to 1.0 indicates higher reliability. Accuracy is impacted by the number of progeny and ancestral records included in the analysis.

GROWTH

Calving Ease Direct (CED), is expressed as a difference in percentage of unassisted births, with a higher value indicating greater calving ease in first-calf heifers. It predicts the average difference in ease with which a sire’s calves will be born when he is bred to first-calf heifers.

Birth Weight EPD (BW), expressed in pounds, is a predictor of a sire’s ability to transmit birth weight to his progeny compared to that of other sires.

Weaning Weight EPD (WW), expressed in pounds, is a predictor of a sire’s ability to transmit weaning growth to his progeny compared to that of other sires.

Residual Average Daily Gain (RADG), feed efficiency expressed in pounds per day, is a predictor of a sire’s genetic ability for postweaning gain in future progeny compared to that of other sires, given a constant amount of feed consumed.

Yearling Weight EPD (YW), expressed in pounds, is a predictor of a sire’s ability to transmit yearling growth to his progeny compared to that of other sires.

Yearling Height EPD (YH), is a predictor of a sire’s ability to transmit yearling height, expressed in inches, compared to that of other sires.

Scrotal Circumference EPD (SC), expressed in centimeters, is a predictor of the difference in transmitting ability for scrotal size compared to that of other sires.

Docility (DOC), is expressed as a difference in yearling cattle temperament, with a higher value indicating more favorable docility. It predicts the average difference of progeny from a sire in comparison with another sire’s calves.

MATERNAL

Heifer Pregnancy (HP), is a selection tool to increase the probability or chance of a sire’s daughters becoming pregnant as first-calf heifers during a normal breeding season. A higher EPD is the more favorable direction, and the EPD is reported in percentage units.

Calving Ease Maternal (CEM), is expressed as a difference in percentage of unassisted births with a higher value indicating greater calving ease in first-calf daughters. It predicts the average ease with which a sire’s daughters will calve as first-calf heifers when compared to daughters of other sires.

Maternal Milk EPD (Milk), is a predictor of a sire’s genetic merit for milk and mothering ability as expressed in his daughters compared to daughters of other sires. In other words, it is that part of a calf’s weaning weight attributed to milk and mothering ability.

Mature Weight EPD (MW), expressed in pounds, is a predictor of the difference in mature weight of daughters of a sire compared to the daughters of other sires.

Mature Height EPD (MH), expressed in inches, is a predictor of the difference in mature height of a sire’s daughters compared to daughters of other sires.

Cow Energy Value (\$EN), expressed in dollars savings per cow per year, assesses differences in cow energy requirements as an expected dollar savings difference in daughters of sires. A larger value is more favorable when comparing two animals (more dollars saved on feed energy expenses). Components for computing the cow \$EN savings difference include lactation energy requirements and energy costs associated with differences in mature cow size.

CARCASS

The genetic evaluation produces a single set of EPDs for carcass weight, marbling score, Ribeye area and fat thickness. The units of measure are in carcass trait format and analyzed on an age-constant basis.

Carcass Weight EPD (CW), expressed in pounds is a predictor of the differences in hot carcass weight of a sire’s progeny compared to progeny of other sires.

Marbling EPD (Marb), expressed as a fraction of the difference in USDA marbling score of a sire’s progeny compared to progeny of other sires.

Ribeye Area EPD (RE), expressed in square inches, is a predictor of the difference in ribeye area of a sire’s progeny compared to progeny of other sires.

Fat Thickness EPD (Fat), expressed in inches, is a predictor of the differences in external fat thickness at the 12th rib (as measured between the 12th and 13th ribs) of a sire’s progeny compared to progeny of other sires.

\$VALUE INDEXES

\$Value indexes, are multi-trait selection indexes to assist beef producers by adding simplicity to genetic selection decisions. \$Values are reported in dollars per head, where a higher value is more favorable. The \$Value is an estimate of how future progeny of each sire are expected to perform, on average, compared to progeny of other sires in the database if the sires were randomly mated to cows and if calves were exposed to the same environment.

Weaned Calf Value (\$W), an index value expressed in dollars per head, is the expected average difference in future progeny performance for preweaning merit. \$W includes both revenue and cost adjustments associated with differences in birth weight, weaning direct growth, maternal milk, and mature cow size.

Feedlot Value (\$F), an index value expressed in dollars per head, is the expected average difference in future progeny performance for postweaning merit compared to progeny of other sires.

Grid Value (\$G), an index value expressed in dollars per head, is the expected average difference in future progeny performance for carcass grid merit compared to progeny of other sires.

Quality Grade (\$QG) represents the quality grade segment of the economic advantage found in \$G. \$QG is intended for the specialized user wanting to place more emphasis on improving quality grade. The carcass marbling (Marb) EPD, which is influenced by carcass marbling scores and ultrasound percent intramuscular fat (% IMF) measurements, contribute to \$QG.

Yield Grade (\$YG) \$YG represents the yield grade segment of the economic advantage found in \$G. \$YG is intended for the specialized user wanting to place more emphasis on red meat yield. It provides a multi-trait approach to encompass ribeye, fat thickness and weight into an economic value for red meat yield.

\$G combines both \$QG and \$YG, and may be the best carcass decision tool for focusing on quality and red meat yield simultaneously.

Beef Value (\$B), an index value expressed in dollars per head, is the expected average difference in future progeny performance for postweaning and carcass value compared to progeny of other sires.



Insurance
Equine &
Livestock

Bull Mortality & Infertility Insurance

For more information please contact:

Tyler Holland

(406) 949-1326 - cell

(406) 684-5264 - office

tylerholland@3rivers.net

Providing solutions for the livestock industry
for over 25 years.

Coverage	
<p>The coverage provides traditional, full mortality for death from natural causes or humane destruction as a result of a life-threatening injury. The endorsement for Accident, Sickness & Disease (ASD) Infertility provides coverage in the event of permanent impotency, infertility or the bull inability to naturally service cows as a result of an accident, sickness, or disease sustained during the policy.</p>	
Option 1	Option 2
<p>Bull Mortality and Infertility Coverage</p> <p>Values Not to exceed purchase price</p> <p>Term One Year Policy Term</p> <p>Premium 10% of the Purchase Price Premium Fully Earned \$200 Minimum Premium Per Animal</p> <p>Testing All bulls must be tested, certified and listed in the official catalog of a herd sale</p> <p>Full Mortality 100% of the value of the bull in the event of death or humane destruction as a result of a life-threatening injury.</p> <p>Accident, Sickness & Disease (ASD) Infertility 80% of the value of the bull, less salvage value, in the event of permanent impotency, infertility or being incapable of serving females as a result of an accident, illness, or disease sustained during the policy.</p>	<p>Bull Mortality Coverage</p> <p>Values Not to exceed purchase price</p> <p>Term Renewable One-Year Policy Term for Bulls 6 Month - 7 Years of age</p> <p>Premium 5.5% of the Purchase Price \$200 Minimum Premium Per Animal</p> <p>Testing Signed statement of health required for all bulls for which coverage is requested.</p> <p>Veterinarian examination required on bulls of \$50,000 or more</p> <p>Full Mortality 100% of the value of the bull in the event of death or humane destruction as a result of a life-threatening injury.</p>

Thank you...

Thank you to all who make our sale possible. From you the buyers, to the trucker, the lunch help and cleaning crew we appreciate you all. For the professionals we hire to work with us on herd health, feeding, veterinary needs, and sale preparation we want to thank you. Without the help of our crew, family, friends and neighbors during, calving, branding, weighing and shipping we would never be able to pull off these sales.

To the friends who give their time the weekend before the sale to help Mike & Ted clean, retag, and feed the bulls before the sale and then work sale day we owe you!

To our sale day crew on the auction block and the ring men we appreciate your efforts in running a smooth sale.

For the great photos of the bulls we thank John Goggins, and thank you to our auctioneer, Roger for always doing a great job.

To those of you who are joining us on sale day our heartfelt thanks for you support.

Thank you to our ranch veterinarian:

Clint Hilt, DVM

Hilt Veterinary Service, LLC

Dutton, MT 59433

406.463.2426

***We appreciate all your dedication to our program
whether it's for the cattle or horses.***

GOLLAHER RANCH

3112 Cascade Hound Creek Road
Cascade, MT 59421

Presort Standard
US Postage
PAID
Lewistown, MT
Permit #181



**For dollars
invested in bulls,
we offer the best value
you will find anywhere.**

Myrle, Delight & Ted Gollaher 406.468.2273

Mike & Barbara Jo 406.468.0079

Gollaher Bulls...

**Are being DEVELOPED for
EASE OF HANDLING
and DOCILITY.**

**Join us at the ranch
April 4, 2016
Annual Bull Sale**

